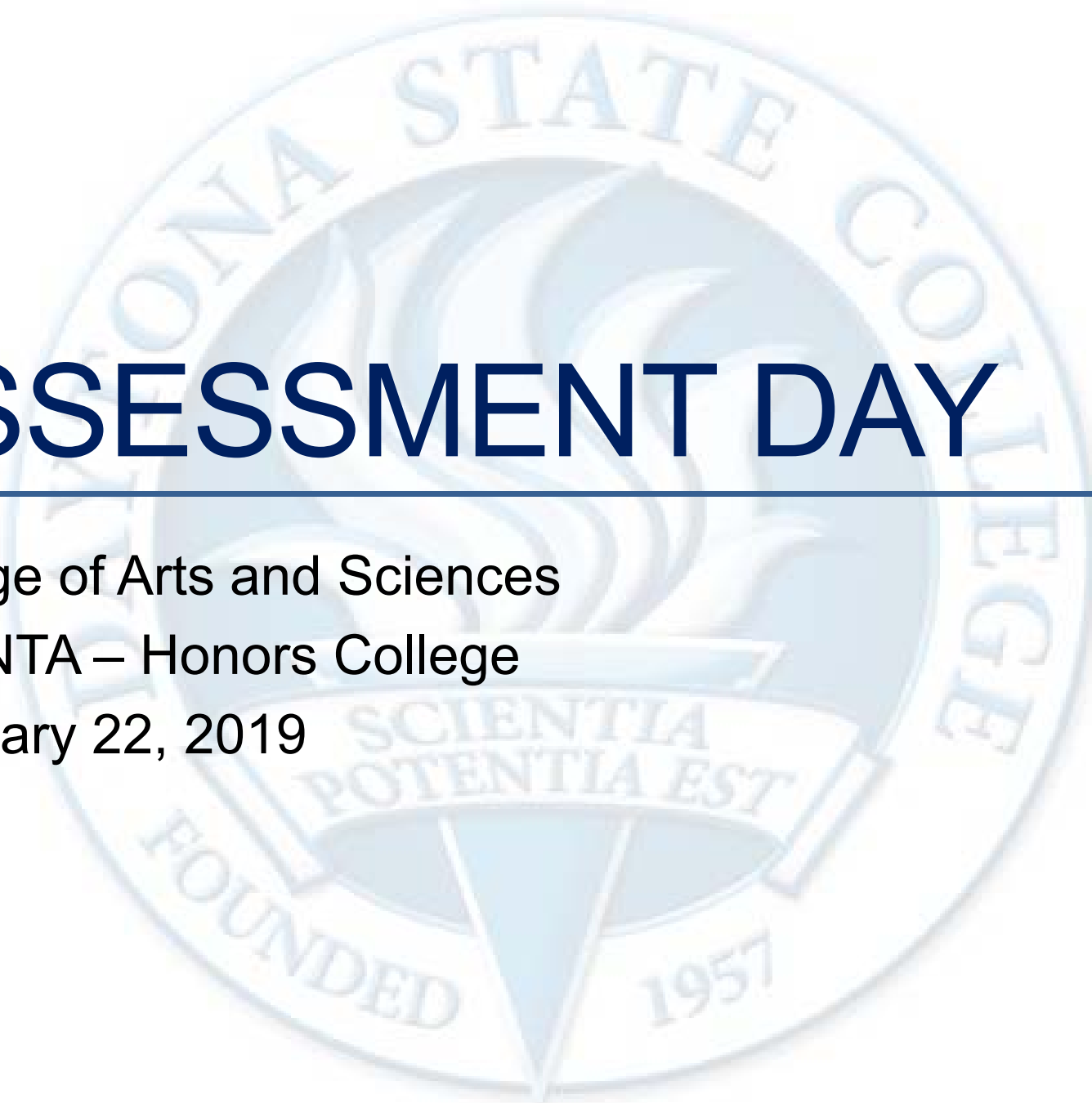


ASSESSMENT DAY

College of Arts and Sciences

QUANTA – Honors College

February 22, 2019



Strengths

Challenges

Recommendations

Academic Assessment

	LEVEL	FOCUS	CONDUCTED BY	FREQUENCY
Academic Success Committee	Program	<ul style="list-style-type: none"> Quality of assessment practices 	Committee of peers	Years 1 & 2
Instructional Program Review	Program / Cluster	<ul style="list-style-type: none"> Enrollment, retention, completion Industry certifications and job placement Program budget and staffing Advisory committees Curriculum changes 	Committee of peers	Year 3
Assessment Day	Course/ Program	<ul style="list-style-type: none"> Enrollment by demographics Graduation and retention Average class size Course success rate Placement rate SLOs, PLOs and ILOs 	Program Chair and Faculty	Years 1, 2, 3

Requirements

<https://daytonastate.edu/quantahonorscollege/index.html>

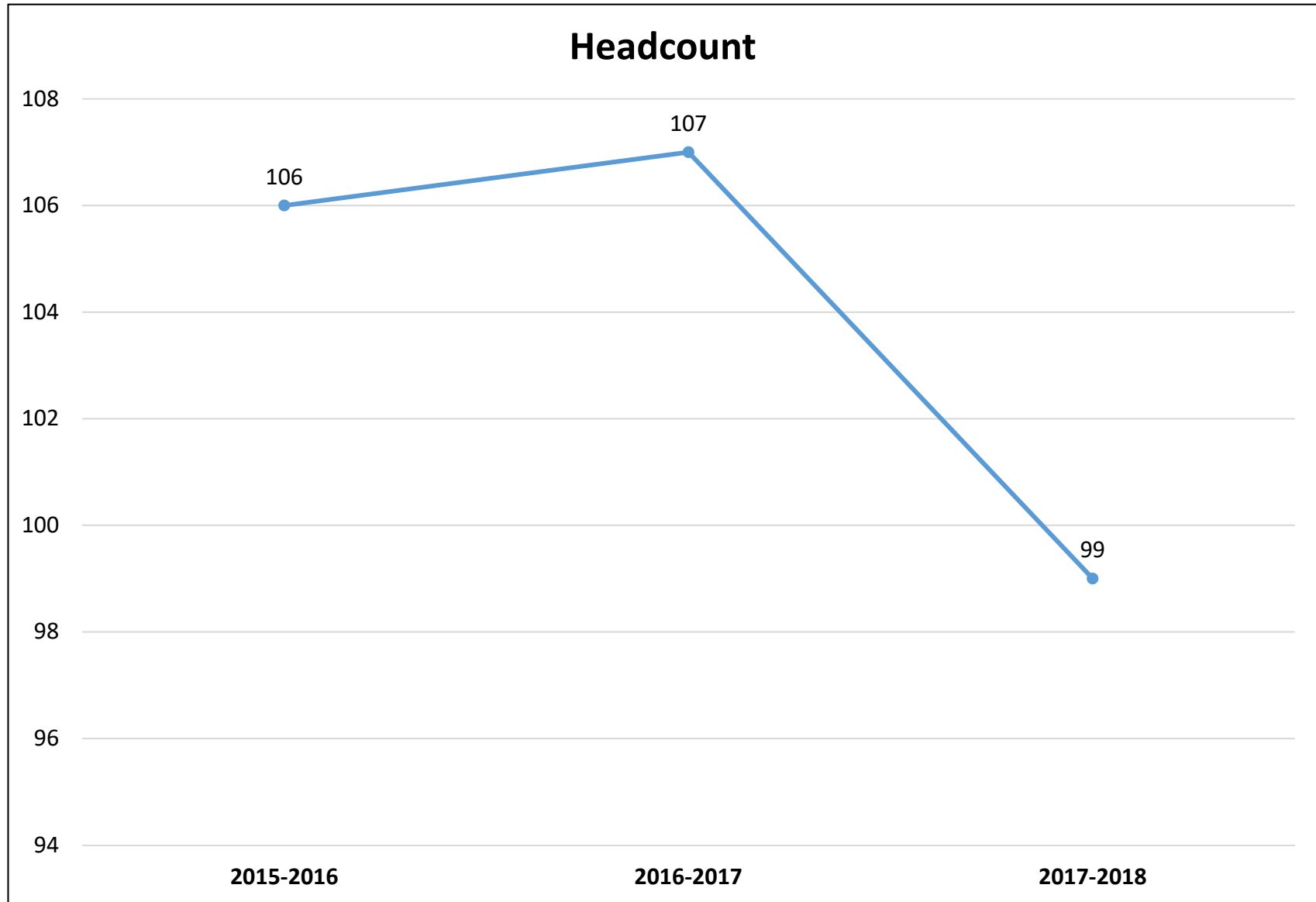
Last Assessment Day – Action Items

04/13/2018:

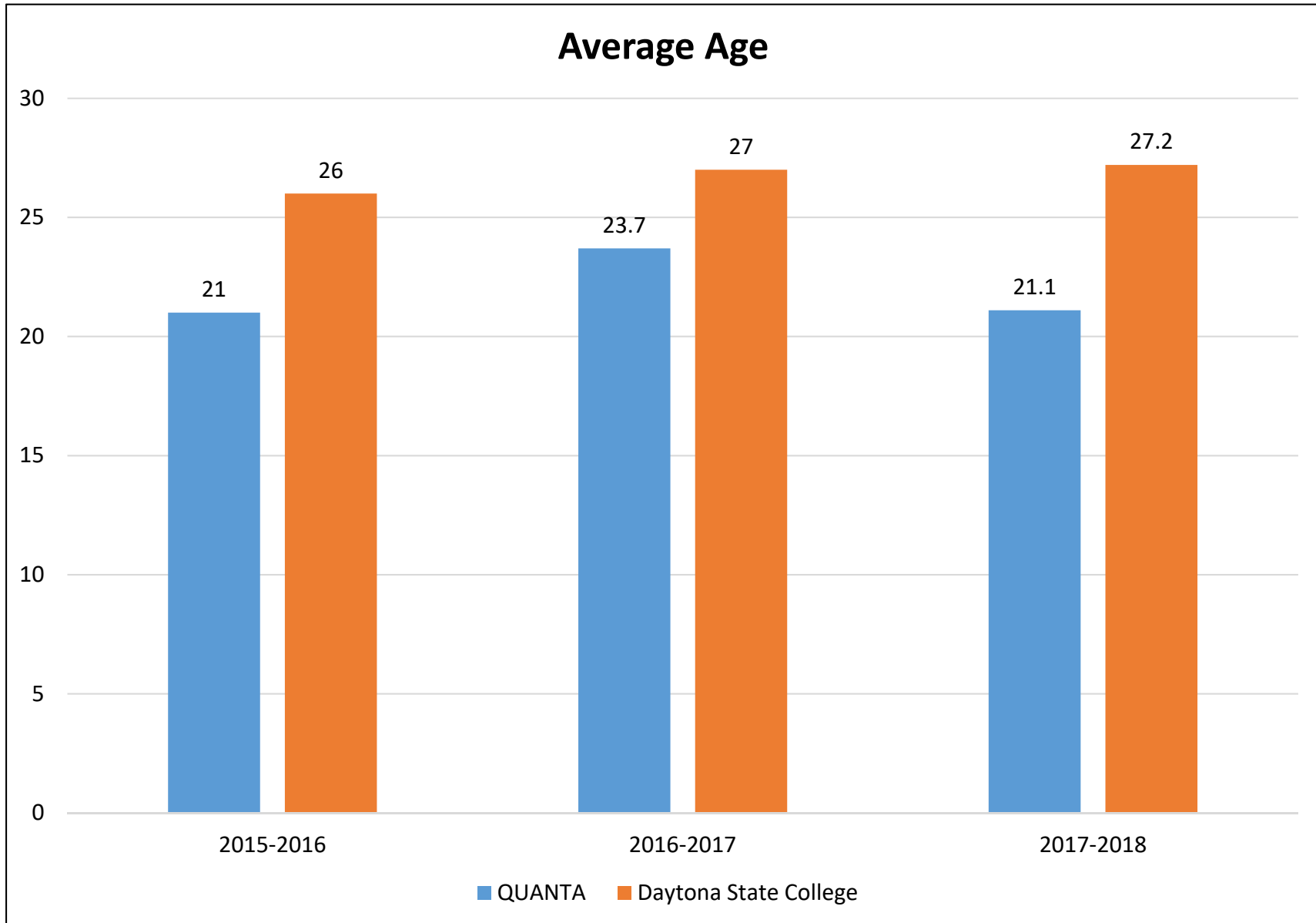
- Explore recruitment through talent search (TRiO) K-12
- Add Honors check box to the college application (Karen Sanders - Admissions)
- Create student groups in PeopleSoft (Karen Sanders - Admissions)
- Grades by cluster (Maggie to provide us with the list of clusters)
- Data from withdrawal surveys (Kathy to provide questions to Maggie)

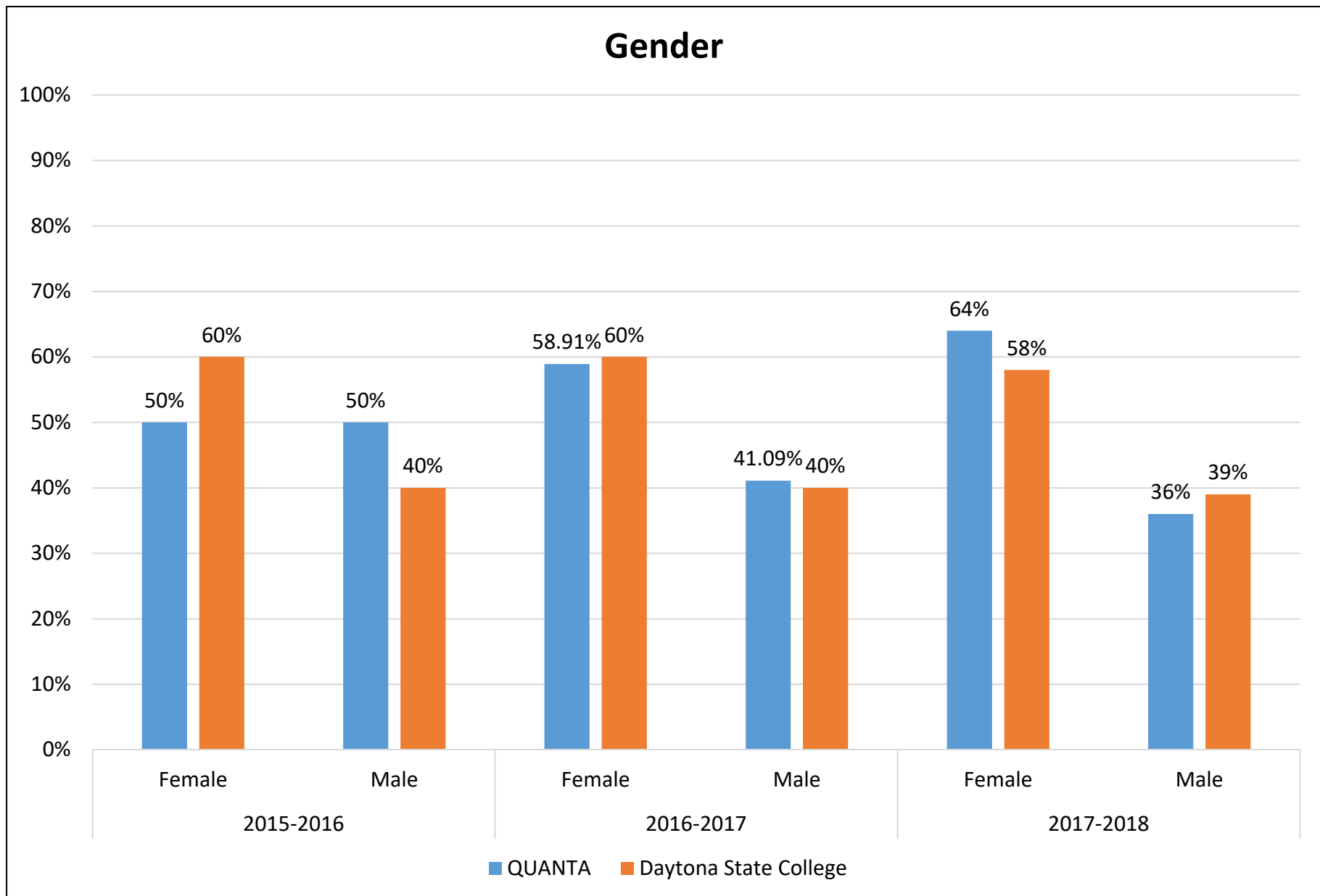
IE and IR

- Revise data REL/SLS 1101-1102 and remove AML2060

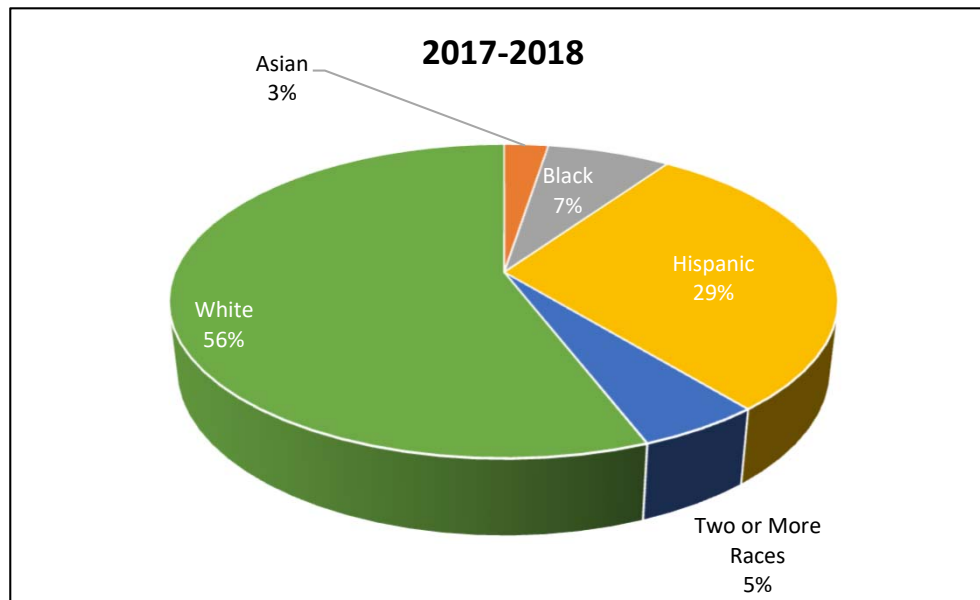
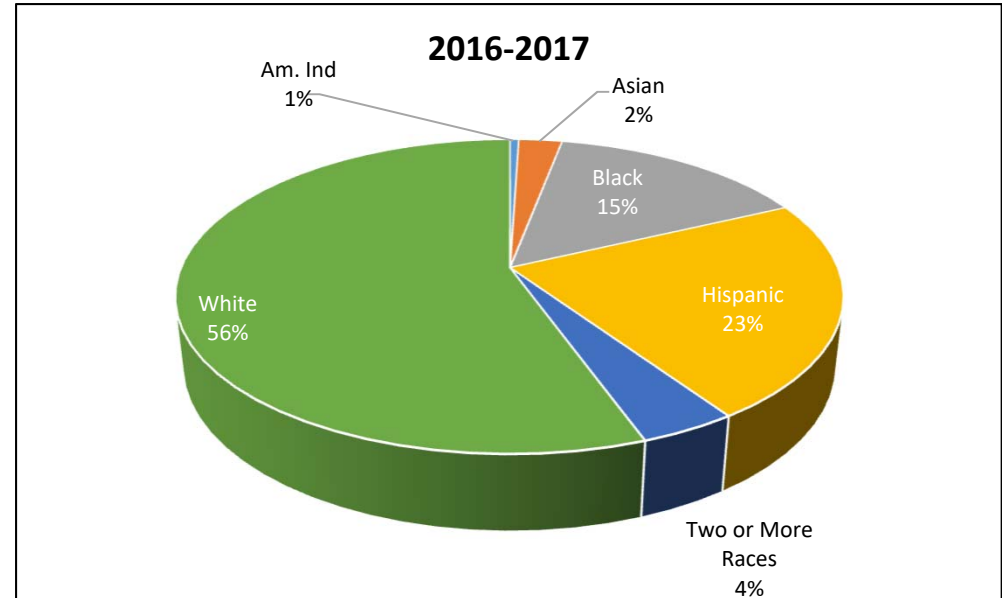
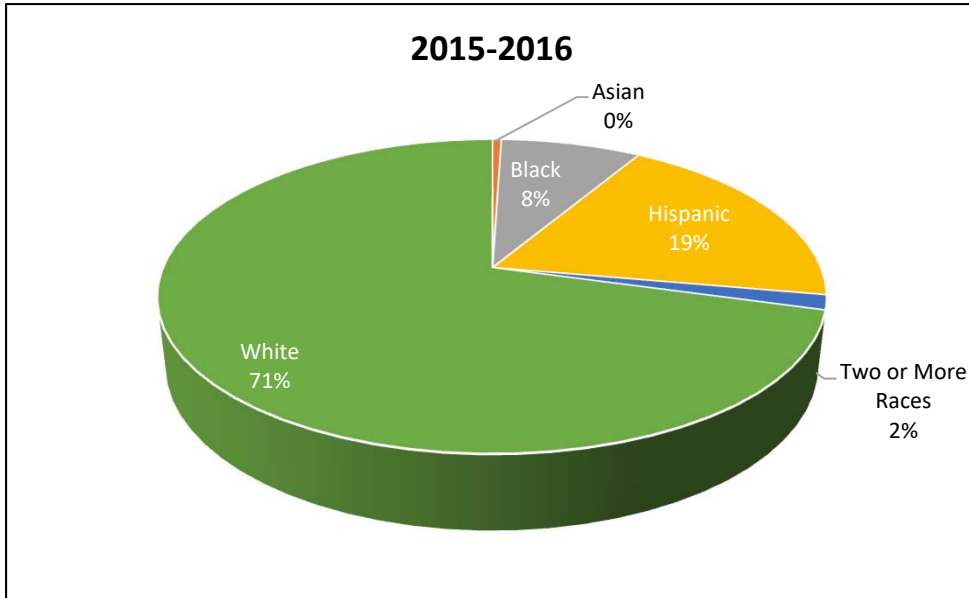


College Enrollment Decreased: 0.7%(14/15); 1.15% (15/16); 3.7%(16/17); 0.7%(17/18)





Race / Ethnicity by Program



DSC Averages 2017-2018			
Black or African Amer	Hispanic	2 or More Races	White
14%	19%	3%	59%

Excludes individuals whose race / ethnicity is not reported.

Source: IR Program Assessment Data

Retention Rates Fall to Fall

Program and Fall Cohort Year		Registered	Exclusions	Adjusted Cohort	Retained by QUANTA		Retained by College		Total Retained
					N	%	N	%	
QUANTA	FA15	105	15	90	60	66.7%			
	FA16	98	16	82	33	40.2%	5	6.1%	46.3%
	FA17*	53	1	52	34	65%	8	15%	81%

College average (67.1%)

Registered - Includes all students enrolled in the fall term of the specified year, with the specified program as their primary major.

Exclusions - Includes students who are deceased or graduated fall of the specified year or the following spring or summer.

Not retained - Students who were not registered the following fall term.

Retained by DSC - Students who were still registered at DSC the following fall but with a different primary major.

Retained by Program - Students who were registered the following fall with the same primary major.

Source: IR Program Assessment Data

Retention Rates by Race/Ethnicity

Fall 17 to Fall 18 Cohort Year	Registered	Exclusions	Adjusted Cohort	Retained	
				N	%
Asian	2	0	2*	1	50%
Black	4	0	4	3	75%
Hawaii/Pac	1	0	1	1	100%
Hispanic	14	1	13**	8	62%
Two or More Races	3	0	3	3	100%
White	28	0	28***	17	61%

one student retained by DSC, **two students retained by DSC, *five students retained by DSC*

College average (African American: 49.9%, Hispanic: 66.3%)

Registered - Includes all students enrolled in the fall term of the specified year, with the specified program as their primary major.

Exclusions - Includes students who are deceased or graduated fall of the specified year or the following spring or summer.

Not retained - Students who were not registered the following fall term.

Retained by DSC - Students who were still registered at DSC the following fall but with a different primary major.

Retained by Program - Students who were registered the following fall with the same primary major.

Source: IR Program Assessment Data

Course Success Rates

Courses	2015-2016		2015-2016 Overall % Successful	2016-2017		2016-2017 Overall % Successful	2017-2018		2017-2018 Overall % Successful
	Attempted	% Successful		Attempted	% Successful		Attempted	% Successful	
BSC1005							39	87%	77%
ENC1101	60	80%	71%	48	83%	74%	45	91%	72%
ENC1102	48	77%	77%	47	79%	77%	44	70%	79%
ENC2210	32	91%	75%	31	74%	76%	35	94%	81%
IDH2028				20	100%		35	100%	100%
LIS2004							44	73%	
LIT2000	73	71%	77%	71	89%	80%	57	93%	82%
MGF2106							27	89%	70%
POS2041	31	87%	78%	30	67%	82%	33	97%	85%
PSY1012							28	86%	77%
SLS2505	73	70%	70%	70	90%	90%	56	93%	91%
STA2023	31	87%	77%	31	68%	75%	35	94%	81%
CPO2001	55	73%	72%	57	79%	75%			
REL2300	55	67%	75%	59	80%	71%	46	70%	74%
Total	300	76%		464	82%		524	87%	



■ Indicates a success rate of 90% or higher
■ Indicates a success rate between 70% and 89%
■ Indicates a success rate below 70%

Course Success Rates by Instructional Method and Location

Courses	IM and Campus	2016-2017		2017-2018	
		Attempted	% Successful	Attempted	% Successful
BSC1005	Lecture - Daytona			39	87%
ENC1101	Hybrid - Daytona	48	83%	45	91%
ENC1102	Hybrid - Daytona	47	79%	44	70%
ENC2210	Hybrid - Daytona	31	74%	35	94%
IDH2028	Hybrid - Daytona	20	100%	35	100%
LIS2004	Online			44	73%
LIT2000	Hybrid - Daytona	71	89%	57	93%
MGF2106	Lecture - Daytona			27	89%
POS2041	Hybrid - Daytona	30	67%	33	97%
PSY1012	Hybrid - Daytona			28	86%
SLS2505	Hybrid - Daytona	70	90%	56	93%
STA2023	Hybrid - Daytona	31	68%	35	94%
CPO2001	Hybrid- Daytona	57	79%		
REL2300	Hybrid- Daytona	59	80%	46	70%
Total		464	82%	524	87%



■ Indicates a success rate of 90% or higher
■ Indicates a success rate between 70% and 89%
■ Indicates a success rate below 70%

QUANTA Course Success Rate by Instructional Method – Overall

Campus	2016-2017		2017-2018	
	Attempted	% Successful	Attempted	% Successful
Lecture	51	80%	66	88%
Hybrid	413	82%	414	88%
Online			44	73%
Total	464	82%	524	87%



■ Indicates a success rate of 90% or higher
■ Indicates a success rate between 70% and 89%
■ Indicates a success rate below 70%

Course Success Rates by Race/Ethnicity (1 of 2)

Course and Campus,	2017-2018	
	Attempted	% Successful
BSC1005	38	87%
Asian	1	100%
Black	3	67%
Hawaii/Pac	1	100%
Hispanic	9	89%
Two or More Races	3	100%
White	21	86%
ENC1101	44	91%
Asian	2	100%
Black	4	100%
Hawaii/Pac	1	100%
Hispanic	10	90%
Two or More Races	3	100%
White	24	88%
ENC1102	43	72%
Asian	1	100%
Black	4	50%
Hawaii/Pac	1	100%
Hispanic	9	67%
Two or More Races	2	100%
White	26	73%
ENC2210	35	94%
Asian	1	100%
Black	3	100%
Hispanic	14	93%
Two or More Races	2	50%
White	15	100%
IDH2028	35	100%
Asian	1	100%
Black	3	100%
Hispanic	14	100%
Two or More Races	1	100%
White	16	100%

Course and Campus,	2017-2018	
	Attempted	% Successful
LIS2004	43	72%
Asian	1	100%
Black	4	75%
Hawaii/Pac	1	100%
Hispanic	8	63%
Two or More Races	3	100%
White	26	69%
LIT2000	56	93%
Asian	2	100%
Black	4	100%
Hawaii/Pac	1	100%
Hispanic	15	93%
Two or More Races	3	100%
White	31	90%
MGF2106	26	88%
Asian	1	100%
Black	1	100%
Hawaii/Pac	1	100%
Hispanic	5	80%
Two or More Races	3	100%
White	15	87%
POS2041	33	97%
Asian	1	100%
Black	2	100%
Hispanic	12	100%
Two or More Races	2	50%
White	16	100%
PSY1012	27	85%
Asian	1	100%
Black	3	67%
Hawaii/Pac	1	100%
Hispanic	6	83%
Two or More Races	3	100%
White	13	85%

Indicates a success rate of 90% or higher
 Indicates a success rate between 70% and 89%
 Indicates a success rate below 70%

Course Success Rates by Race/Ethnicity (2 of 2)

Course and Campus,	2017-2018	
	Attempted	% Successful
REL2300	45	71%
Asian	1	100%
Black	4	50%
Hawaii/Pac	1	100%
Hispanic	9	67%
Two or More Races	3	100%
White	27	70%
SLS2505	55	93%
Asian	2	100%
Black	4	100%
Hawaii/Pac	1	100%
Hispanic	14	93%
Two or More Races	3	100%
White	31	90%
STA2023	35	94%
Asian	1	100%
Black	3	100%
Hispanic	14	93%
Two or More Races	2	50%
White	15	100%
Grand Total	515	87%

Indicates a success rate of 90% or higher

Indicates a success rate between 70% and 89%

Indicates a success rate below 70%

Course Success Rates by Race/Ethnicity

Race/Ethnicity	2015-2016		2016-2017		2017-2018	
	Attempted	% Successful	Attempted	% Successful	Attempted	% Successful
African American	35	91%	69	71%	42	83%
Asian	3	100%	17	88%	16	100%
Hispanic/Latino	85	81%	149	86%	139	88%
Native Hawaiian/ Pacific Islander	6	0%			9	100%
Two or More Races	6	100%	19	58%	33	91%
Unknown	30	63%	7	86%		
White	293	75%	297	81%	276	86%
Total	458	76%	559	81%	515	87%



■ Indicates a success rate of 90% or higher
■ Indicates a success rate between 70% and 89%
■ Indicates a success rate below 70%

Grade Distribution

Courses	2017-2018 (SU17, FA17, SP18)							
	A	B	C	D	F	FNs	Ws	W1s
BSC1005	9	22	3	2	1	0	1	1
ENC1101	6	25	10	0	3	0	1	0
ENC1102	17	14	0	7	1	0	2	3
ENC2210	7	16	10	1	1	0	0	0
IDH2028	17	12	6	0	0	0	0	0
LIS2004	9	16	7	4	3	2	2	1
LIT2000	9	30	14	0	2	1	1	0
POS2041	5	16	11	1	0	0	0	0
MGF2106	9	13	2	1	0	0	1	1
PSY1012	5	15	4	1	1	0	1	1
REL2300	18	14	0	7	2	1	2	2
SLS2505	9	30	13	0	3	0	1	0
STA2023	8	14	11	1	1	0	0	0
Total	128(24%)	237(45%)	91(17%)	25(5%)	18(3%)	4(1%)	12(2%)	9(2%)

Average Class Size by Course

Courses	2017-2018	
	Sections	Average Class Size
BSC1005	2	20
ENC1101	3	15
ENC1102	3	15
ENC2210	3	12
IDH2028	1	35
LIS2004	1	44
LIT2000	3	19
MGF2106	2	14
POS2041	3	11
PSY1012	2	14
REL2300	3	15
SLS2505	3	19
STA2023	3	12
Total	32	16

Average Class Size by Instructional Method

Courses	IM	2017-2018	
		Sections	Average Class Size
BSC1005	Lecture	2	20
ENC1101	Hybrid	3	15
ENC1102	Hybrid	3	15
ENC2210	Hybrid	3	12
IDH2028	Hybrid	1	35
LIS2004	Online	1	44
LIT2000	Hybrid	3	19
MGF2106	Lecture	2	14
POS2041	Hybrid	3	11
PSY1012	Hybrid	2	14
SLS2505	Hybrid	3	19
STA2023	Hybrid	3	12
REL2300	Hybrid	3	15
Total		32	16

■ Indicates a success rate of 90% or higher
■ Indicates a success rate between 70% and 89%
■ Indicates a success rate below 70%

QUANTA Average Class Size by Instructional Method – Overall

Campus	2017-2018	
	Section	Average Class Size
Lecture	4	17
Hybrid	27	15
Online	1	44
Total	32	16