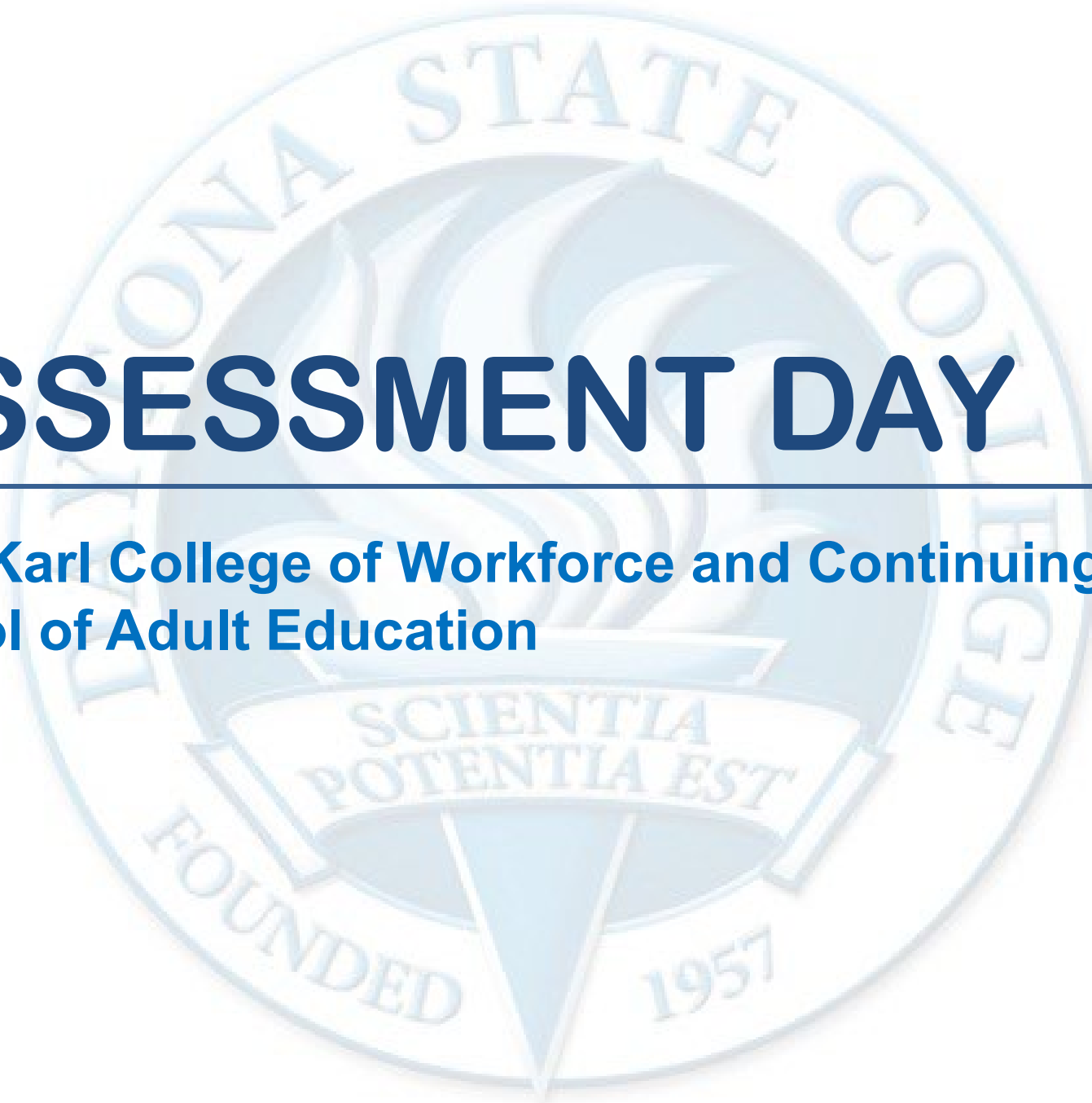


ASSESSMENT DAY

**Mary Karl College of Workforce and Continuing Education
School of Adult Education**



Strengths

Challenges

Recommendations

Academic Assessment

	LEVEL	FOCUS	CONDUCTED BY	FREQUENCY
Academic Success Committee	Program	<ul style="list-style-type: none"> Quality of assessment practices 	Committee of peers	Years 1 & 2
Instructional Program Review	Program/ Cluster	<ul style="list-style-type: none"> Enrollment, retention, completion Industry certifications and job placement Program budget and staffing Advisory committees Curriculum changes 	Committee of peers	Year 3
Assessment Day	Course/ Program	<ul style="list-style-type: none"> Enrollment by demographics Graduation and retention Average class size Course success rate Placement rate SLOs, PLOs and ILOs 	Program Chair and Faculty	Years 1, 2, 3

Programs in this Department

400200 - General Education Development (GED)

400300 - English for Speakers of Other Languages (ESOL)

400303 - Ad ESOL Coll/Career Readiness

400400 - Applied Academics for Adult Education (AEV)

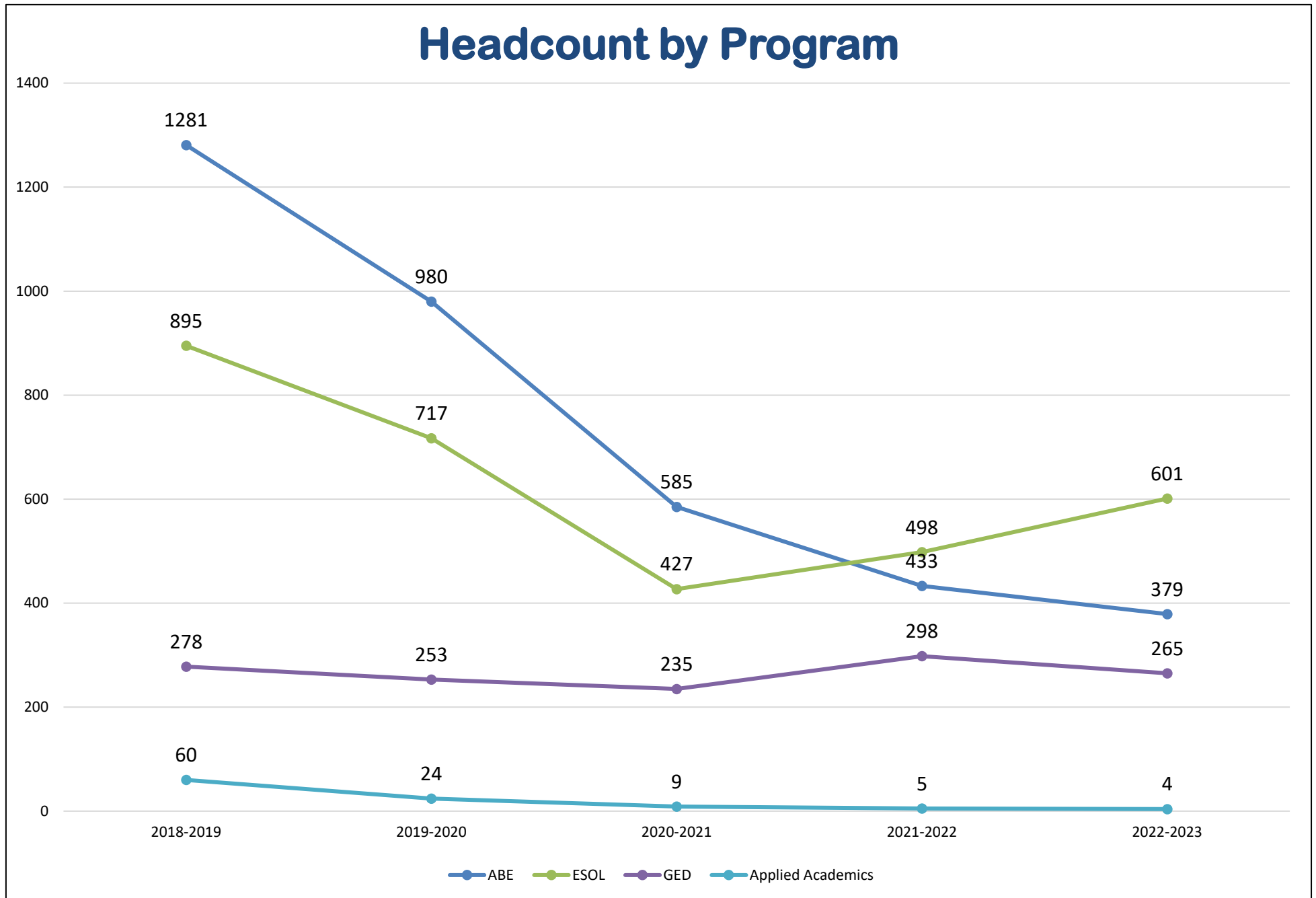
500000 - Adult Basic Education (ABE)

School of Adult Education

Last Assessment Day Action Items

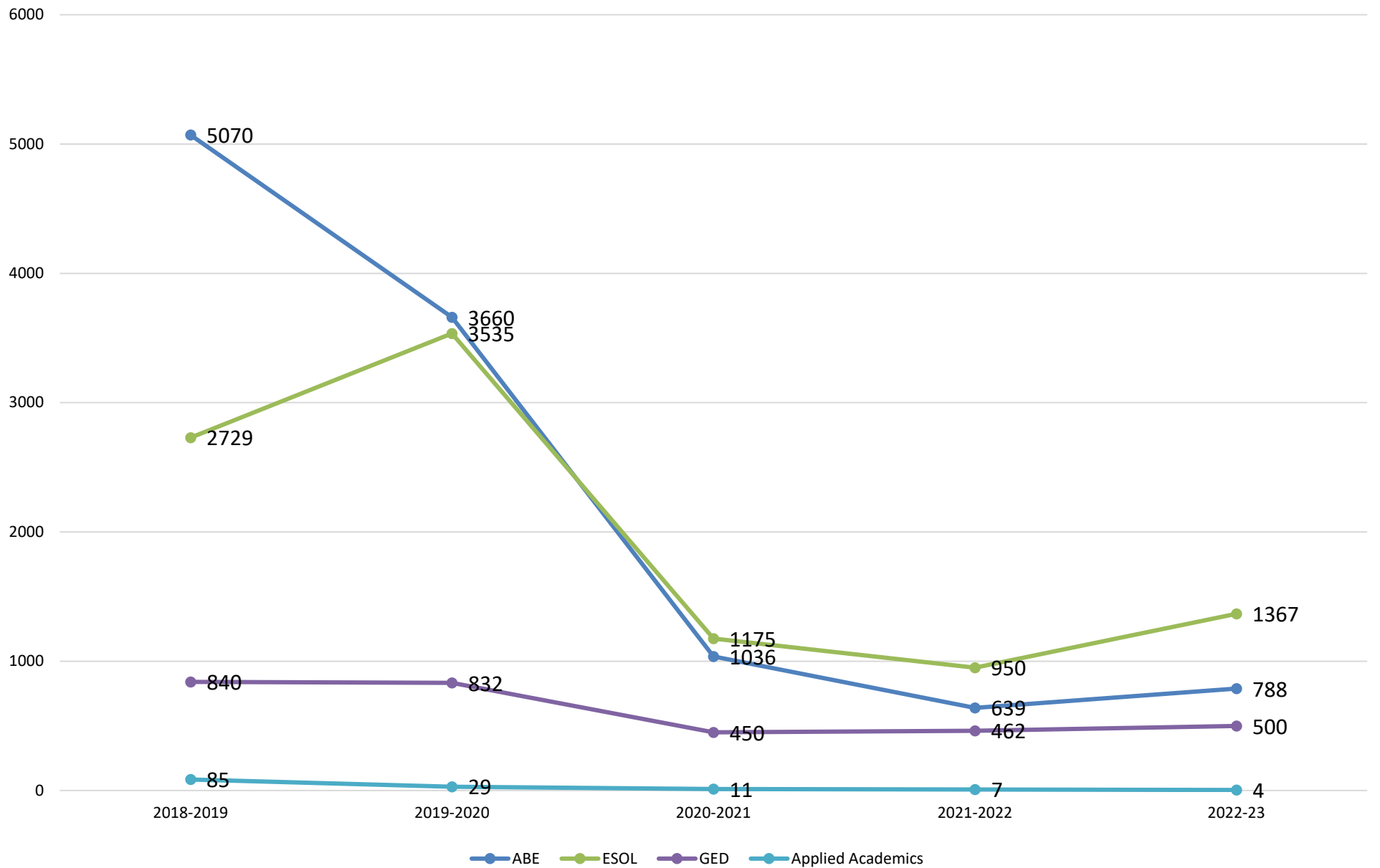
Last Assessment Day (04-11-2023)

- Spatial issues on the Daytona campus need to stay a priority – specifically removing walls from the smaller classrooms to create larger, more efficient classrooms that can facilitate larger class sizes
- Using grant funds, create a full-time position that is youth-facing to help with the tracking, and transitioning of students in the 16-19 age range; could also help to navigate Judicial Affairs concerns, ADA and disability needs, and liaise with parents and Volusia schools
- Paid professional development opportunities for instructors – look into grant funds for this need



Students may be duplicated across programs.

Enrollment by Program



AHS/GED Persistence Rate

Year	Fall Enrolled	Spring Enrolled	Earned Fall or Spring not Enrolled Spring	Total Spring Enrolled or Completed Fall/Spring	Persistence Rate
2017-2018	194	99	22	121	62.37%
2018-2019	160	81	20	101	61.13%
2019-2020	152	93	10	103	67.76%
2020-2021	103	56	9	65	63.11%
2021-2022*	141	66	24	90	63.83%
2022-2023*	115	73	25	98	85.22%

* GED only

AE Graduates and Time to Degree by Award

Program	2018-2019		2019-2020		2020-2021		2021-2022		2022-2023	
	Awards	TTD (years)	Awards	TTD (years)	Awards	TTD (years)	Awards	TTD (years)	Awards	TTD (years)
GED	130	1.93	67	1.85	70	2.33	110	1.27	65	1.15

Calculate from 1st session enrolled in an AHS course
 Calculate from 1st session enrolled in a GED course

Graduation Rate

Program	1st Enrl Sess/Yr	Degree by Sess/Yr	Within yrs	Number enrolled	Degrees earned (Number of Graduates)	Grad Rate
GED	FA13	SP17	4	97	37	38.00%
	FA14	SP18	4	92	29	31.52%
	FA15	SP19	4	77	26	33.77%
	FA16	SP20	4	80	38	47.50%
	FA17	SP21	4	49	23	46.94%
	FA18	SP22	4	39	20	51.28%
	FA19	SP23	4	65	22	33.85%

GED Transition Rate to DSC College Credit (UGD)

Program	Degree year	Degrees earned	cc enrolled years	Number cc enrolled	Trans Rate
GED	2015/2016	201	2015/2016 or 2016/2017	90	44.78%
	2016/2017	202	2016/2017 or 2017/2018	72	35.64%
	2017/2018	209	2017/2018 or 2018/2019	78	37.32%
	2018/2019	220	2018/2019 or 2019/2020	73	33.18%
	2019/2020	141	2019/2020 or 2020/2021	34	24.11%
	2020/2021	141	2020/2021 or 2021/2022	29	20.57%
	2021/2022	129	2021/2022 or 2022/2023	14	10.85%

GED Transition Rate to DSC PSAV (CTE)

Program	Degree year	Degrees earned	cc enrolled years	Number PSAV enrolled	PSAV Trans Rate
GED	2015/2016	201	2015/2016 or 2016/2017	18	8.96%
	2016/2017	202	2016/2017 or 2017/2018	15	7.43%
	2017/2018	209	2017/2018 or 2018/2019	20	9.57%
	2018/2019	220	2018/2019 or 2019/2020	14	6.36%
	2019/2020	141	2019/2020 or 2020/2021	9	6.38%
	2020/2021	141	2020/2021 or 2021/2022	2	1.42%
	2021/2022	129	2021/2022 or 2022/2023	5	3.88%

ESOL Transition Rate to DSC College Credit (UGD) / PSAV (CTE)

Program	LEP0016 to LEP0030	# Students	cc enrolled years	Number CC enrolled	CC Trans Rate
ESOL	2018/2019	32	2018/2019 or 2019/2020	2	6.3%
	2019/2020	13	2019/2020 or 2020/2021	1	7.7%
	2020/2021	12	2020/2021 or 2021/2022	1	8.3%
	2021/2022	16	2021/2022 or 2022/2023	1	6.3%
	2022/2023 (in progress)	7	2022/2023 or 2023/2024	2	28.6%

Program	LEP0016 to LEP0030	# Students	cc enrolled years	Number PSAV enrolled	PSAV Trans Rate
ESOL	2018/2019	32	2018/2019 or 2019/2020	0	0.0%
	2019/2020	13	2019/2020 or 2020/2021	1	7.7%
	2020/2021	12	2020/2021 or 2021/2022	1	8.3%
	2021/2022	16	2021/2022 or 2022/2023	0	0.0%
	2022/2023 (in progress)	7	2022/2023 or 2023/2024	0	0.0%

ABE Program (1 of 4)

Program	Initial Educational Functioning Level	Enrollment by EFL	LCP Enrollments by EFL	Distinct Students Enrolled by EFL	Students Earning at Least one LCP at the EFL Level	2021-22 % Students Earning at Least one LCP at the EFL Level
ABE	Beginning Literacy (1)	17	6	9	3	33.3%
	Beginning Basic Education (2)	54	12	27	12	44.4%
	Intermediate Low (3)	169	37	102	23	22.5%
	Intermediate High (4)	252	14	149	14	9.4%
ABE Total		492	69	287	52	18.1%

Years are reporting years, SU-FA-SP
 Blank cells or missing data indicate no enrollment

ABE Program (2 of 4)

Program	Initial Educational Functioning Level	Course	Enrollments by Courses	LCP Enrollments by Course	Distinct Students Enrolled by Course	Students Earning at Least One LCP at the Course Level	2021-22 % Students Earning at Least One LCP at the EFL Level
ABE	Beginning Literacy (1)	ABX0100S	4	2	3	1	33.3%
	Beginning Basic Education (2)		37	5	19	4	21.1%
	Intermediate Low (3)		132	28	79	16	20.3%
	Intermediate High (4)		202	6	119	5	4.2%
ABE	Beginning Literacy (1)	ABX0200S	13	4	6	2	33.3%
	Beginning Basic Education (2)		17	7	11	4	36.4%
	Intermediate Low (3)		37	9	24	7	29.2%
	Intermediate High (4)		50	8	33	8	24.2%
ABE Total			492	69	294	47	16.0%

ABE Program (3 of 4)

Program	Initial Educational Functioning Level	Campus	Enrollments by EFL and Campus	LCP Enrollments by EFL and Campus	Distinct Students Enrolled by EFL and Campus	Students Earning at Least One LCP at the EFL Level by Campus	2021-22 % Students Earning at Least One LCP at the EFL Level by Campus
ABE	Beginning Literacy (1)	Daytona	8	2	4	1	25.0%
		Deland	2	0	1	0	0.0%
		Deltona	7	4	4	2	50.0%
		NSB					
		Online					
ABE	Beginning Basic Education (2)	Daytona	38	7	19	4	21.1%
		Deland	3	1	2	1	50.0%
		Deltona	12	3	6	2	33.3%
		NSB	1	1	1	1	100%
		Online					
ABE	Intermediate Low (3)	Daytona	104	22	66	13	19.7%
		Deland	15	0	8	0	0.0%
		Deltona	46	14	26	9	34.6%
		NSB	4	1	4	1	25.0%
		Online					
ABE	Intermediate High (4)	Daytona	115	6	74	5	6.8%
		Deland	40	0	20	0	0.0%
		Deltona	77	5	46	4	8.7%
		NSB	16	3	10	1	10.0%
		Online	4		2	0	0.0%
		ABE Total	492	69	293	44	15.0%

ABE Program (4 of 4)

Program	Initial Educational Functioning Level	Instructional Mode	Enrollments by EFL and IM	LCP Enrollments by EFL and IM	Distinct Students Enrolled by EFL and IM	Students Earning at Least One LCP at the EFL Level by IM	2021-22 % Students Earning at Least One LCP at the EFL Level by IM
ABE	Beginning Literacy (1)	Online					
		Lecture	17	6	9	3	33.3%
ABE	Beginning Basic Education (2)	Online					
		Lecture	54	12	27	8	29.6%
ABE	Intermediate Low (3)	Online					
		Lecture	169	37	102	23	22.5%
ABE	Intermediate High (4)	Online	4	0	2	0	0.0%
		Lecture	248	14	148	10	6.8%
ABE Total			492	69	288	44	15.3%

GED Program (1 of 2)

Program	Initial Educational Functioning Level	Enrollment by EFL	LCP Enrollments by EFL	Distinct Students Enrolled by EFL	Students Earning at Least one LCP at the EFL Level	2021-22 % Students Earning at Least one LCP at the EFL Level
GED	Low (5 - Grade 9-10)	306	53	179	35	19.6%
GED Total		306	53	179	35	19.6%

Program	Initial Educational Functioning Level	Course	Enrollments by Courses	LCP Enrollments by Course	Distinct Students Enrolled by Course	Students Earning at Least One LCP at the Course Level	2021-22 % Students Earning at Least One LCP at the EFL Level
GED	Low (5 - Grade 9-10)	GED6301S	189	44	121	30	24.8%
GED	Low (5 - Grade 9-10)	GED6900S	117	9	67	6	9.0%
GED Total			306	53	188	36	19.1%

GED Program (2 of 2)

Program	Initial Educational Functioning Level	Campus	Enrollments by EFL and Campus	LCP Enrollments by EFL and Campus	Distinct Students Enrolled by EFL and Campus	Students Earning at Least One LCP at the EFL Level by Campus	2021-22 % Students Earning at Least One LCP at the EFL Level by Campus
GED	GED Low (5 - Grade 9-10)	Daytona	85	17	58	12	20.7%
		Deland	22	7	14	5	35.7%
		Deltona	63	20	39	13	33.3%
		NSB	19	0	12	0	0.0%
		Online	117	9	67	6	9.0%
GED Total			306	53	190	36	18.9%

Program	Initial Educational Functioning Level	Instructional Mode	Enrollments by EFL and IM	LCP Enrollments by EFL and IM	Distinct Students Enrolled by EFL and IM	Students Earning at Least One LCP at the EFL Level by IM	2021-22 % Students Earning at Least One LCP at the EFL Level by IM
GED	GED Low (5 - Grade 9-10)	Online	117	9	67	6	9.0%
		Lecture	189	44	121	30	24.8%
GED Total			306	53	188	36	19.1%

ESOL Program (1 of 5)

Program	Initial Educational Functioning Level	Enrollment by EFL	LCP Enrollments by EFL	Distinct Students Enrolled by EFL	Students Earning at Least one LCP at the EFL Level	2021-22 % Students Earning at Least one LCP at the EFL Level
ESOL	Beginning Literacy (B)	43	7	29	5	17.2%
ESOL	Beginning Low (C)	85	30	50	19	38.0%
ESOL	Beginning High (D)	307	80	140	44	31.4%
ESOL	Intermediate Low (E)	359	91	156	53	34.0%
ESOL	Intermediate High (F)	380	82	175	47	26.9%
ESOL	Advanced (G)	406	62	151	35	23.2%
ESOL Total		1580	352	701	203	29.0%

ESOL Program (2 of 5)

Program	Initial Educational Functioning Level	Course	Enrollments by Courses	LCP Enrollments by Course	Distinct Students Enrolled by Course	Students Earning at Least One LCP at the Course Level	2021-22 % Students Earning at Least One LCP at the EFL Level
ESOL	Beginning Literacy (B)	LEP0013S	17	5	13	4	30.8%
	Beginning Low (C)		4	1	4	1	25.0%
	Beginning High (D)		5	3	4	2	50.0%
	Intermediate Low (E)		4	2	3	2	66.7%
	Advanced (G)		1	1	1	1	100%
ESOL	Beginning Literacy (B)	LEP0014S	13	0	10	0	0.0%
	Beginning Low (C)		73	23	40	14	35.0%
	Beginning High (D)		36	12	24	8	33.3%
	Intermediate Low (E)		27	7	14	5	35.7%
	Intermediate High (F)		6	2	3	1	33.3%
	Advanced (G)		1	0	1	0	0.0%
ESOL	Beginning Literacy (B)	LEP0015S	9	2	5	1	20.0%
	Beginning Low (C)		7	5	6	4	66.7%
	Beginning High (D)		235	54	108	34	31.5%
	Intermediate Low (E)		110	33	60	22	36.7%
	Intermediate High (F)		33	15	24	13	54.2%
	Advanced (G)		4	3	4	3	75.0%

ESOL Program (3 of 5)

Program	Initial Educational Functioning Level	Course	Enrollments by Courses	LCP Enrollments by Course	Distinct Students Enrolled by Course	Students Earning at Least One LCP at the Course Level	2021-22 % Students Earning at Least One LCP at the EFL Level
ESOL	Beginning Literacy (B)	LEP0016S	4	0	1	0	0.0%
	Beginning Low (C)		1	1	1	1	100%
	Beginning High (D)		28	9	13	6	46.2%
	Intermediate Low (E)		200	43	84	25	30.0%
	Intermediate High (F)		90	16	53	12	22.6%
	Advanced (G)		31	7	16	6	37.5%
ESOL	Beginning High (D)	LEP0017S	3	2	2	1	50.0%
	Intermediate Low (E)		18	6	7	3	42.9%
	Intermediate High (F)		232	45	95	21	22.1%
	Advanced (G)		139	35	70	20	28.6%
ESOL	Intermediate High (F)	LEP0018S	19	4	8	3	37.5%
	Advanced (G)		230	16	66	9	13.6%
ESOL Total			1580	352	740	222	30.0%

ESOL Program (4 of 5)

Program	Initial Educational Functioning Level	Campus	Enrollments by EFL and Campus	LCP Enrollments by EFL and Campus	Distinct Students Enrolled by EFL and Campus	Students ¹ Earning at Least One LCP at the EFL Level by Campus	2021-22 % Students Earning at Least One LCP at the EFL Level by Campus
ESOL	Beginning Literacy (B)	Daytona	28	6	21	4	19.0%
		Deltona	11	1	7	1	14.3%
		Online	4	0	1	0	0.0%
ESOL	Beginning Low (C)	Daytona	57	19	34	12	35.3%
		Deltona	6	2	3	1	33.3%
		Online	22	9	13	6	46.2%
ESOL	Beginning High (D)	Daytona	186	53	83	28	33.7%
		DeLand	16	5	8	3	37.5%
		Deltona	100	21	48	12	25.0%
		Online	5	1	2	1	50.0%
ESOL	Intermediate Low (E)	Daytona	212	56	88	32	36.4%
		DeLand	9	0	5	0	0.0%
		Deltona	121	32	54	19	35.2%
		Online	17	3	10	2	20.0%
ESOL	Intermediate High (F)	Daytona	186	51	89	28	31.5%
		DeLand	8	2	3	1	33.3%
		Deltona	139	20	61	13	21.3%
		Online	47	9	24	6	25.0%
ESOL	Advanced (G)	Daytona	209	45	82	23	28.0%
		DeLand	3	1	2	1	50.0%
		Deltona	140	9	46	7	15.2%
		Online	54	7	26	4	15.4%
ESOL Total			1580	352	701	204	29.1%

ESOL Program (5 of 5)

Program	Initial Educational Functioning Level	Instructional Mode	Enrollments by EFL and IM	LCP Enrollments by EFL and IM	Distinct Students Enrolled by EFL and IM	Students Earning at Least One LCP at the EFL Level by IM	2021-22 % Students Earning at Least One LCP at the EFL Level by IM
ESOL	Beginning Literacy (B)	Online	4	0	1	0	0.0%
		Lecture	39	7	28	5	17.9%
ESOL	Beginning Low (C)	Online	0				
		Lecture	85	30	50	19	38.0%
ESOL	Beginning High (D)	Online	5	1	2	1	50.0%
		Lecture	302	79	138	43	31.2%
ESOL	Intermediate Low (E)	Online	17	3	10	2	20.0%
		Lecture	342	88	147	51	34.7%
ESOL	Intermediate High (F)	Online	47	9	24	6	25.0%
		Lecture	333	73	153	42	27.5%
ESOL	Advanced (G)	Online	54	7	26	4	15.4%
		Lecture	352	55	130	31	23.8%
ESOL Total			1580	352	709	204	28.8%

AEV Program (1 of 2)

Program	Initial Educational Functioning Level	Enrollment by EFL	LCP Enrollments by EFL	Distinct Students Enrolled by EFL	Students Earning at Least one LCP at the EFL Level	2021-22 % Students Earning at Least one LCP at the EFL Level
AEV	Low (8 - Grade 9-10)	2	0	2	0	0.0%
AEV Total		2	0	2	0	0.0%

Program	Initial Educational Functioning Level	Course	Enrollments by Courses	LCP Enrollments by Course	Distinct Students Enrolled by Course	Students Earning at Least One LCP at the Course Level	2021-22 % Students Earning at Least One LCP at the EFL Level
AEV	Low (8 - Grade 9-10)	AEV0100S	2	0	2	0	0.0%
AEV Total			2	0	2	0	0.0%

AEV Program (2 of 2)

Program	Initial Educational Functioning Level	Campus	Enrollments by EFL and Campus	LCP Enrollments by EFL and Campus	Distinct Students Enrolled by EFL and Campus	Students Earning at Least One LCP at the EFL Level by Campus	2021-22 % Students Earning at Least One LCP at the EFL Level by Campus
AEV	Low (8 - Grade 9-10)	Online	2	0	2	0	0.0%
AEV Total			2	0	2	0	0.0%