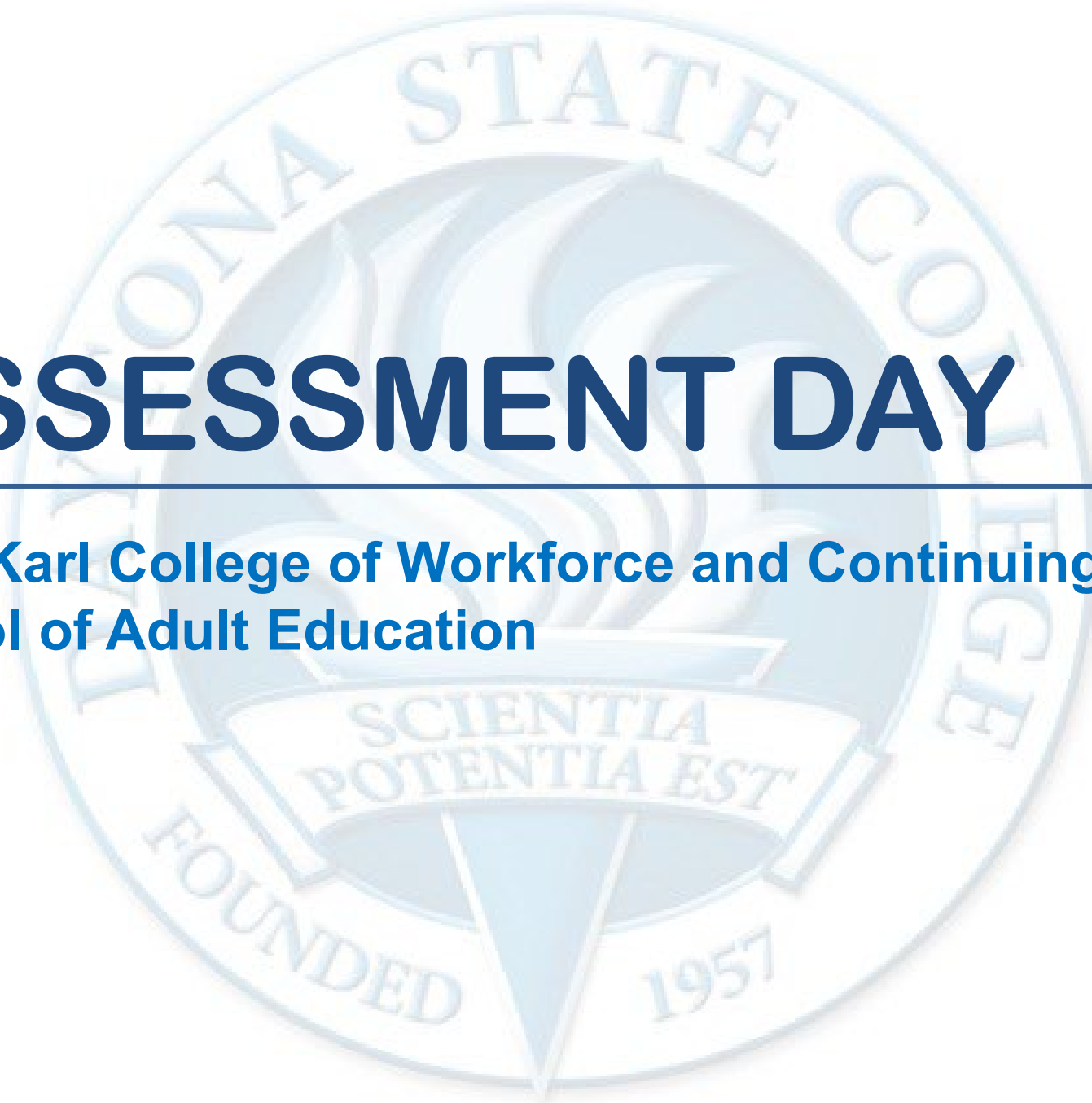


ASSESSMENT DAY

**Mary Karl College of Workforce and Continuing Education
School of Adult Education**



Strengths

Challenges

Recommendations

Academic Assessment

	LEVEL	FOCUS	CONDUCTED BY	FREQUENCY
Academic Success Committee	Program	<ul style="list-style-type: none"> Quality of assessment practices 	Committee of peers	Years 1 & 2
Instructional Program Review	Program/ Cluster	<ul style="list-style-type: none"> Enrollment, retention, completion Industry certifications and job placement Program budget and staffing Advisory committees Curriculum changes 	Committee of peers	Year 3
Assessment Day	Course/ Program	<ul style="list-style-type: none"> Enrollment by demographics Graduation and retention Average class size Course success rate Placement rate SLOs, PLOs and ILOs 	Program Chair and Faculty	Years 1, 2, 3

Programs in this Department

400200 - General Education Development (GED)

400300 - English for Speakers of Other Languages (ESOL)

400303 - Ad ESOL Coll/Career Readiness

400400 - Applied Academics for Adult Education

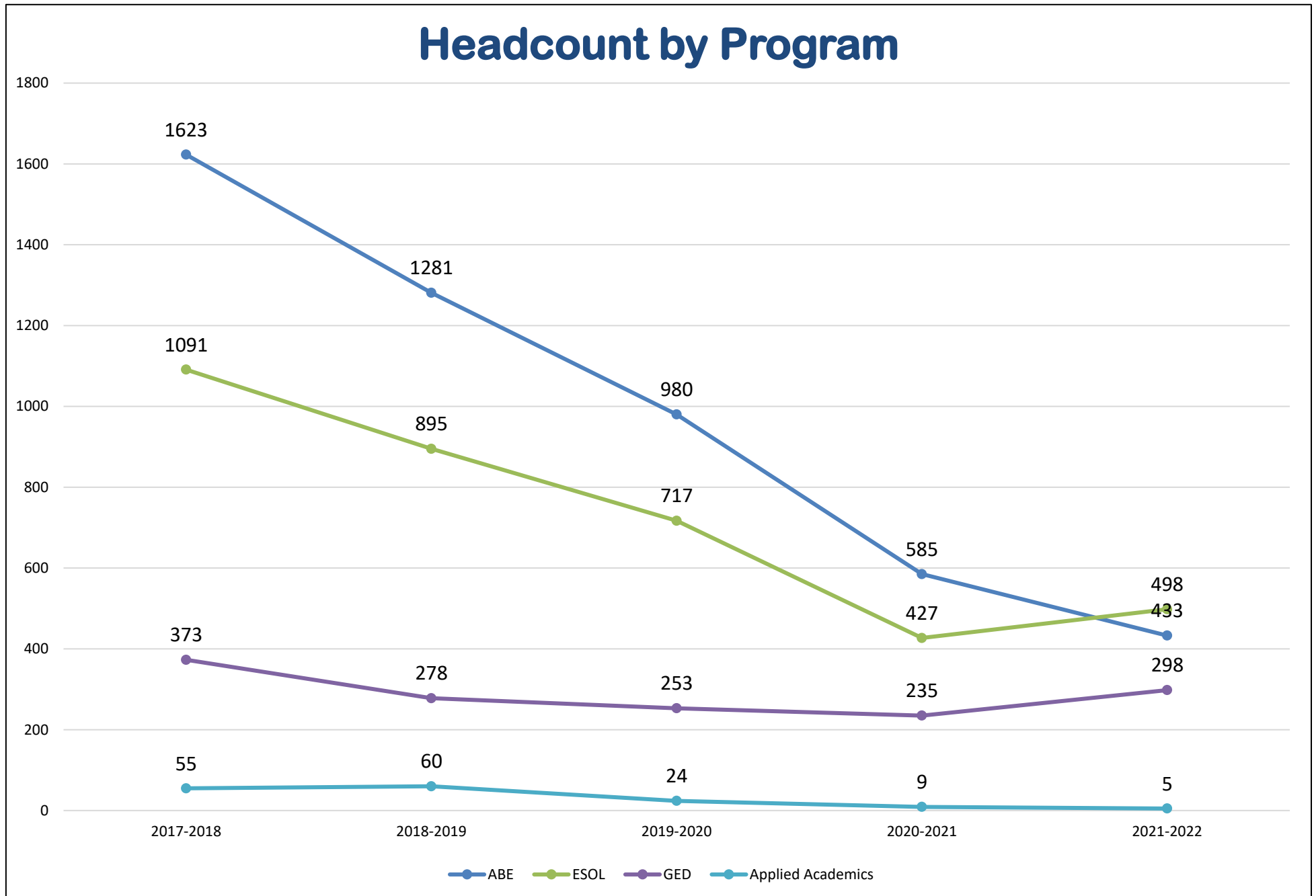
500000 - Adult Basic Education (ABE)

School of Adult Education

Last Assessment Day Action Items

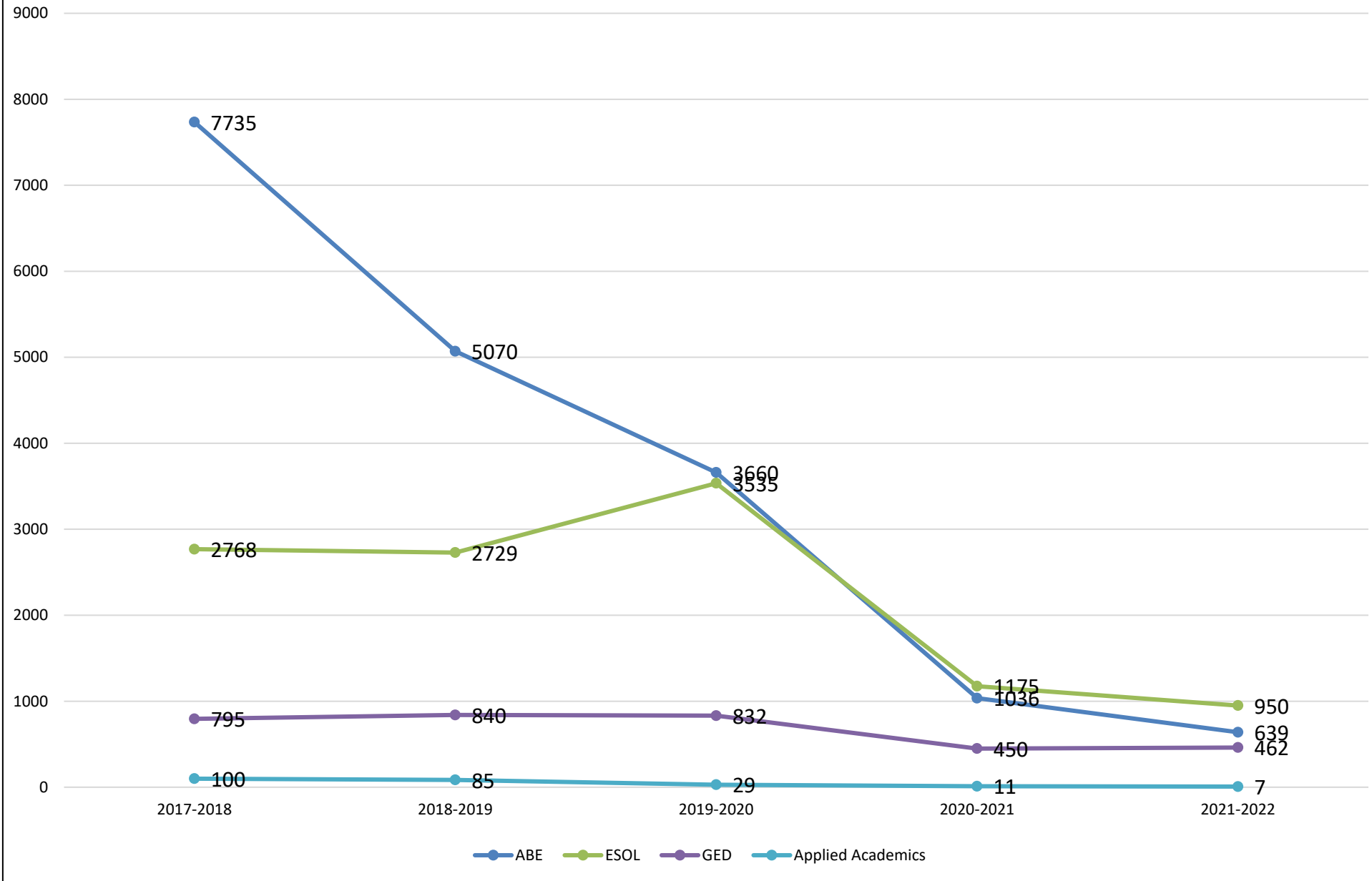
Last Assessment Day (03-28-2022)

- Reevaluate and tighten the Adult Ed program parameters, look into program term limits;
- Look into how to continue to use HyFlex technology as a tool not as a coded IM;
- Clarify flexibility language as it pertains to Adult Ed (differentiate the use of HyFlex technology/instruction);
- Find a donor (Foundation?) to set up a food pantry for Adult Ed students;
- Form a regional cohort to discuss program issues informally;
- Continue digital marketing for recruitment



Students may be duplicated across programs.

Enrollment by Program



AHS/GED Persistence Rate

Year	Fall Enrolled	Spring Enrolled	Earned Fall or Spring not Enrolled Spring	Total Spring Enrolled or Completed Fall/Spring	Persistence Rate
2016-2017	194	96	20	116	59.79%
2017-2018	194	99	22	121	62.37%
2018-2019	160	81	20	101	61.13%
2019-2020	152	93	10	103	67.76%
2020-2021	103	56	9	65	63.11%
2021-2022*	141	66	24	90	63.83%

* GED only

AE Graduates and Time to Degree by Award

Program	2017-2018		2018-2019		2019-2020		2020-2021		2021-2022	
	Awards	TTD (years)	Awards	TTD (years)	Awards	TTD (years)	Awards	TTD (years)	Awards	TTD (years)
GED	138	1.84	130	1.93	67	1.85	70	2.33	110	1.27

Calculate from 1st session enrolled in an AHS course
 Calculate from 1st session enrolled in a GED course

Graduation Rate

Program	1st Enrl Sess/Yr	Degree by Sess/Yr	Within yrs	Number enrolled	Degrees earned (Number of Graduates)	Grad Rate
GED	FA13	SP17	4	97	37	38.00%
	FA14	SP18	4	92	29	31.52%
	FA15	SP19	4	77	26	33.77%
	FA16	SP20	4	80	38	47.50%
	FA17	SP21	4	49	23	46.94%
	FA18	SP22	4	39	20	51.28%

GED Transition Rate to DSC College Credit (UGD)

Program	Degree year	Degrees earned	cc enrolled years	Number cc enrolled	Trans Rate
GED	2015/2016	201	2015/2016 or 2016/2017	90	44.78%
	2016/2017	202	2016/2017 or 2017/2018	72	35.64%
	2017/2018	209	2017/2018 or 2018/2019	78	37.32%
	2018/2019	220	2018/2019 or 2019/2020	73	33.18%
	2019/2020	141	2019/2020 or 2020/2021	34	24.11%
	2020/2021	141	2020/2021 or 2021/2022	29	20.57%

GED Transition Rate to DSC PSAV (CTE)

Program	Degree year	Degrees earned	cc enrolled years	Number PSAV enrolled	PSAV Trans Rate
GED	2015/2016	201	2015/2016 or 2016/2017	18	8.96%
	2016/2017	202	2016/2017 or 2017/2018	15	7.43%
	2017/2018	209	2017/2018 or 2018/2019	20	9.57%
	2018/2019	220	2018/2019 or 2019/2020	14	6.36%
	2019/2020	141	2019/2020 or 2020/2021	9	6.38%
	2020/2021	141	2020/2021 or 2021/2022	2	1.42%

ESOL Transition Rate to DSC College Credit (UGD) / PSAV (CTE)

Program	LEP0016 to LEP0030	# Students	cc enrolled years	Number CC enrolled	CC Trans Rate
ESOL	2018/2019	32	2018/2019 or 2019/2020	2	6.3%
	2019/2020	13	2019/2020 or 2020/2021	1	7.7%
	2020/2021	12	2020/2021 or 2021/2022	1	8.3%
	2021/2022 (in progress)	16	2021/2022 or 2022/2023	1	6.3%

Program	LEP0016 to LEP0030	# Students	cc enrolled years	Number PSAV enrolled	PSAV Trans Rate
ESOL	2018/2019	32	2018/2019 or 2019/2020	0	0.0%
	2019/2020	13	2019/2020 or 2020/2021	1	7.7%
	2020/2021	12	2020/2021 or 2021/2022	1	8.3%
	2021/2022 (in progress)	16	2021/2022 or 2022/2023	0	0.0%

ABE Program (1 of 4)

Program	Initial Educational Functioning Level	Enrollment by EFL	LCP Enrollments by EFL	Distinct Students Enrolled by EFL	Students Earning at Least one LCP at the EFL Level	2020-21 % Students Earning at Least one LCP at the EFL Level
ABE	Beginning Literacy (1)	36	3	27	2	7.4%
	Beginning Basic Education (2)	96	14	53	11	20.8%
	Intermediate Low (3)	198	46	138	37	26.8%
	Intermediate High (4)	365	14	257	14	5.4%
ABE Total		695	77	432	45	10.4%

Years are reporting years, SU-FA-SP

Blank cells or missing data indicate no enrollment

ABE Program (2 of 4)

Program	Initial Educational Functioning Level	Course	Enrollments by Courses	LCP Enrollments by Course	Distinct Students Enrolled by Course	Students Earning at Least One LCP at the Course Level	2020-21 % Students Earning at Least One LCP at the EFL Level
ABE	Beginning Literacy (1)	ABX0100S	33	3	26	2	7.7%
	Beginning Basic Education (2)		83	12	47	9	19.1%
	Intermediate Low (3)		164	39	118	31	26.3%
	Intermediate High (4)		291	10	208	10	4.8%
ABE	Beginning Literacy (1)	ABX0200S	3	0	2	0	0.0%
	Beginning Basic Education (2)		13	2	8	2	25%
	Intermediate Low (3)		34	7	23	6	26.1%
	Intermediate High (4)		74	4	57	4	7.0%
ABE Total			695	77	432	45	10.4%

ABE Program (3 of 4)

Program	Initial Educational Functioning Level	Campus	Enrollments by EFL and Campus	LCP Enrollments by EFL and Campus	Distinct Students Enrolled by EFL and Campus	Students Earning at Least One LCP at the EFL Level by Campus	2020-21 % Students Earning at Least One LCP at the EFL Level by Campus
ABE	Beginning Literacy (1)	Daytona	14	1	12	1	8.3%
		Deland	5	0	3	0	0.0%
		Deltona	10	2	7	1	14.3%
		NSB					
		Online	7	0	5	0	0.0%
ABE	Beginning Basic Education (2)	Daytona	45	5	31	5	16.1%
		Deland	13	1	6	1	16.7%
		Deltona	23	3	9	2	22.2%
		NSB	6	1	3	1	33.3%
		Online	9	4	6	2	33.3%
ABE	Intermediate Low (3)	Daytona	100	26	71	21	29.6%
		Deland	8	1	6	1	16.7%
		Deltona	50	13	41	11	26.8%
		NSB	5	4	4	3	75.0%
		Online	35	2	23	1	4.3%
ABE	Intermediate High (4)	Daytona	157	7	116	7	6.0%
		Deland	43	0	26	0	0.0%
		Deltona	69	6	53	6	11.3%
		NSB	25	1	19	1	5.3%
		Online	71	0	53	0	0.0%
		ABE Total	695	77	432	45	10.4%

ABE Program (4 of 4)

Program	Initial Educational Functioning Level	Instructional Mode	Enrollments by EFL and IM	LCP Enrollments by EFL and IM	Distinct Students Enrolled by EFL and IM	Students Earning at Least One LCP at the EFL Level by IM	2020-21 % Students Earning at Least One LCP at the EFL Level by IM
ABE	Beginning Literacy (1)	Online	7	0	5	0	0.0%
		Lecture	29	3	22	2	9.1%
ABE	Beginning Basic Education (2)	Online	9	4	6	2	33.3%
		Lecture	87	10	48	9	18.8%
ABE	Intermediate Low (3)	Online	35	2	23	1	4.3%
		Lecture	163	44	121	36	29.8%
ABE	Intermediate High (4)	Online	71	0	53	0	0.0%
		Lecture	294	14	214	14	6.5%
ABE Total			695	77	432	45	10.4%

GED Program (1 of 2)

Program	Initial Educational Functioning Level	Enrollment by EFL	LCP Enrollments by EFL	Distinct Students Enrolled by EFL	Students Earning at Least one LCP at the EFL Level	2020-21 % Students Earning at Least one LCP at the EFL Level
GED	Low (5 - Grade 9-10)	534	127	298	84	28.2%
GED Total		534	127	298	84	28.2%

Program	Initial Educational Functioning Level	Course	Enrollments by Courses	LCP Enrollments by Course	Distinct Students Enrolled by Course	Students Earning at Least One LCP at the Course Level	2020-21 % Students Earning at Least One LCP at the EFL Level
GED	Low (5 - Grade 9-10)	GED6301S	296	90	168	62	36.9%
GED	Low (5 - Grade 9-10)	GED6900S	268	37	144	25	17.4%
GED Total			534	127	298	84	28.2%

GED Program (2 of 2)

Program	Initial Educational Functioning Level	Campus	Enrollments by EFL and Campus	LCP Enrollments by EFL and Campus	Distinct Students Enrolled by EFL and Campus	Students Earning at Least One LCP at the EFL Level by Campus	2020-21 % Students Earning at Least One LCP at the EFL Level by Campus
GED	GED Low (5 - Grade 9-10)	Daytona	122	28	77	22	28.6%
		Deland	42	14	25	9	36.0%
		Deltona	102	40	53	27	50.9%
		NSB	30	8	16	6	37.5%
		Online	238	37	144	25	17.4%
GED Total			534	127	298	84	28.2%

Program	Initial Educational Functioning Level	Instructional Mode	Enrollments by EFL and IM	LCP Enrollments by EFL and IM	Distinct Students Enrolled by EFL and IM	Students Earning at Least One LCP at the EFL Level by IM	2020-21 % Students Earning at Least One LCP at the EFL Level by IM
GED	GED Low (5 - Grade 9-10)	Online	238	37	144	25	16.7%
		Lecture	296	90	168	62	36.9%
GED Total			534	127	298	84	28.2%

ESOL Program (1 of 5)

Program	Initial Educational Functioning Level	Enrollment by EFL	LCP Enrollments by EFL	Distinct Students Enrolled by EFL	Students Earning at Least one LCP at the EFL Level	2020-21 % Students Earning at Least one LCP at the EFL Level
ESOL	Beginning Literacy (B)	46	12	30	6	20.0%
ESOL	Beginning Low (C)	50	18	32	11	34.4%
ESOL	Beginning High (D)	230	64	114	40	35.1%
ESOL	Intermediate Low (E)	252	94	121	57	47.1%
ESOL	Intermediate High (F)	260	77	120	44	36.7%
ESOL	Advanced (G)	264	23	144	16	11.1%
ESOL Total		1,072	288	470	120	25.5%

ESOL Program (2 of 5)

Program	Initial Educational Functioning Level	Course	Enrollments by Courses	LCP Enrollments by Course	Distinct Students Enrolled by Course	Students Earning at Least One LCP at the Course Level	2020-21 % Students Earning at Least One LCP at the EFL Level
ESOL	Beginning Literacy (B)	LEP0013S	28	8	21	5	23.8%
	Beginning Low (C)		5	0	4	0	0.0%
	Beginning High (D)		6	2	4	1	25.0%
	Intermediate Low (E)		1	1	1	1	100%
	Advanced (G)		2	0	1	0	0.0%
ESOL	Beginning Literacy (B)	LEP0014S	7	1	5	1	20.0%
	Beginning Low (C)		38	14	25	9	36.0%
	Beginning High (D)		8	3	6	2	33.3%
	Intermediate Low (E)		7	2	4	1	25.0%
ESOL	Beginning Literacy (B)	LEP0015S	4	1	4	1	25.0%
	Beginning Low (C)		7	4	4	3	75.0%
	Beginning High (D)		188	48	95	35	36.8%
	Intermediate Low (E)		25	10	17	9	52.9%
	Intermediate High (F)		10	3	7	2	28.6%
	Advanced (G)		4	0	2	0	0.0%
ESOL	Beginning Literacy (B)	LEP0016S	4	2	2	1	100%
	Beginning High (D)		19	10	15	9	60.0%
	Intermediate Low (E)		208	80	104	54	51.9%
	Intermediate High (F)		35	9	22	8	36.4%
	Advanced (G)		13	0	7	0	0.0%

ESOL Program (3 of 5)

Program	Initial Educational Functioning Level	Course	Enrollments by Courses	LCP Enrollments by Course	Distinct Students Enrolled by Course	Students Earning at Least One LCP at the Course Level	2020-21 % Students Earning at Least One LCP at the EFL Level
ESOL	Beginning Literacy (B)	LEP0017S	1	0	1	0	0.0%
	Beginning High (D)		9	1	6	1	16.7%
	Intermediate Low (E)		9	1	7	1	14.3%
	Intermediate High (F)		182	63	100	38	38.0%
	Advanced (G)		53	12	33	9	27.3%
ESOL	Beginning Literacy (B)	LEP0018S	2	0	2	0	0.0%
	Intermediate Low (E)		2	0	1	0	0.0%
	Intermediate High (F)		3	2	3	2	66.7%
	Advanced (G)		192	11	113	10	8.8%
ESOL Total			1,072	288	470	120	25.5%

ESOL Program (4 of 5)

Program	Initial Educational Functioning Level	Campus	Enrollments by EFL and Campus	LCP Enrollments by EFL and Campus	Distinct Students Enrolled by EFL and Campus	Students Earning at Least One LCP at the EFL Level by Campus	2020-21 % Students Earning at Least One LCP at the EFL Level by Campus
ESOL	Beginning Literacy (B)	Daytona	32	7	20	4	20.0%
		Flagler	3	0	2	0	0.0%
		Deltona	10	5	7	2	28.6%
		Online	1	0	1	0	0.0%
ESOL	Beginning Low (C)	Daytona	37	13	23	7	30.4%
		Flagler	0				
		Deltona	13	5	9	4	44.4%
		Online	0				
ESOL	Beginning High (D)	Daytona	155	47	71	28	39.4%
		Flagler	5	0	3	0	0.0%
		Deltona	61	17	36	12	33.3%
		Online	9	0	4	0	0.0%
ESOL	Intermediate Low (E)	Daytona	122	53	57	33	57.9%
		Flagler	4	0	2	0	0.0%
		Deltona	96	39	51	23	45.1%
		Online	30	2	14	1	7.1%
ESOL	Intermediate High (F)	Daytona	116	44	59	26	44.1%
		Flagler	0				
		Deltona	70	28	41	15	36.6%
		Online	44	5	24	3	12.5%
ESOL	Advanced (G)	Daytona	118	14	65	10	15.4%
		Flagler	12	0	7	0	0.0%
		Deltona	75	6	47	4	8.5%
		Online	59	3	34	3	8.8%
ESOL Total			1,072	288	470	120	25.5%

ESOL Program (5 of 5)

Program	Initial Educational Functioning Level	Instructional Mode	Enrollments by EFL and IM	LCP Enrollments by EFL and IM	Distinct Students Enrolled by EFL and IM	Students Earning at Least One LCP at the EFL Level by IM	2020-21 % Students Earning at Least One LCP at the EFL Level by IM
ESOL	Beginning Literacy (B)	Online	1	0	1	0	0.0%
		Lecture	45	12	29	6	20.7%
ESOL	Beginning Low (C)	Online	0				
		Lecture	50	18	32	11	34.4%
ESOL	Beginning High (D)	Online	9	0	4	0	0.0%
		Lecture	221	64	110	40	36.4%
ESOL	Intermediate Low (E)	Online	30	2	14	1	7.1%
		Lecture	222	92	110	56	50.9%
ESOL	Intermediate High (F)	Online	44	5	24	3	12.5%
		Lecture	186	72	100	41	41.0%
ESOL	Advanced (G)	Online	59	3	34	3	8.8%
		Lecture	205	20	119	14	11.8%
ESOL Total			1,072	288	470	120	25.5%

AEV Program (1 of 2)

Program	Initial Educational Functioning Level	Enrollment by EFL	LCP Enrollments by EFL	Distinct Students Enrolled by EFL	Students Earning at Least one LCP at the EFL Level	2020-21 % Students Earning at Least one LCP at the EFL Level
AEV	Low (8 - Grade 9-10)	7	0	5	0	0.0%
AEV Total		7	0	5	0	0.0%

Program	Initial Educational Functioning Level	Course	Enrollments by Courses	LCP Enrollments by Course	Distinct Students Enrolled by Course	Students Earning at Least One LCP at the Course Level	2020-21 % Students Earning at Least One LCP at the EFL Level
AEV	Low (8 - Grade 9-10)	AEV0100S	7	0	5	0	0.0%
AEV Total			7	0	5	0	0.0%

AEV Program (2 of 2)

Program	Initial Educational Functioning Level	Campus	Enrollments by EFL and Campus	LCP Enrollments by EFL and Campus	Distinct Students Enrolled by EFL and Campus	Students Earning at Least One LCP at the EFL Level by Campus	2020-21 % Students Earning at Least One LCP at the EFL Level by Campus
AEV	Low (8 - Grade 9-10)	Online	7	0	5	0	0%
AEV Total			7	0	5	0	0%