

ASSESSMENT DAY

College of Business, Engineering and Technology
School of Business – AS/CCC
February 28, 2022

Strengths

Challenges

Recommendations

Academic Assessment

| | LEVEL | FOCUS | CONDUCTED BY | FREQUENCY |
|-------------------------------------|-------------------|--------------------------------------------------------------------------------------------------------------------------------------------------------------------------------------------------------------------------------------|---------------------------|---------------|
| Academic Success Committee | Program | <ul style="list-style-type: none"> Quality of assessment practices | Committee of peers | Years 1 & 2 |
| Instructional Program Review | Program / Cluster | <ul style="list-style-type: none"> Enrollment, retention, completion Industry certifications and job placement Program budget and staffing Advisory committees Curriculum changes | Committee of peers | Year 3 |
| Assessment Day | Course/ Program | <ul style="list-style-type: none"> Enrollment by demographics Graduation and retention Average class size Course success rate Placement rate SLOs, PLOs and ILOs | Program Chair and Faculty | Years 1, 2, 3 |

Programs – Certificates and 2 Year Degree Programs

[2084 - Accounting Technology](#)

[0943 - Accounting Technology Management](#)

[0935 - Accounting Technology Operations](#)

[2059 - Business Administration](#)

[0916 - Business Management](#)

[0913 - Business Operations - Entrepreneurship](#)

[2221 - Industrial Management Technology \(Limited Access Program\)](#)

[0817 - Marketing, Sales and Service - Entrepreneurship](#)

[2229 - Office Administration \(General, Legal or Medical Specializations\)](#)

[0914 - Office Management](#)

[0926 - Office Support \(Technical Certificate\)](#)

[2062 - Paralegal Studies \(Legal Assisting\)](#)

School of Business – AS/CCC

Last Assessment Day Action Items

Last Assessment Day (02-08-2021)

- Anita and Karla to get together and see possibility to combined A.S. and certificates outcome assessment - **Programs moved to another department**
- Contact Alicia Alexander re: changes to Industrial Management (name change and other changes);
- Explore options to increase success rates in ACG2021, move to full-term, look into gap for underserved population, research options of two accounting pathways;
- Look at adjunct referrals to ASC, embed widget in adjunct course shells to the ASC;
- Expand recruitment efforts

Program Learning Outcomes

AS Business Administration #2059

PLO 1: Generate effective communication of ideas, concepts and terminology.

PLO 2: Identify legal and ethical concerns and demonstrate social responsibility in business situations.

PLO 3: Explain how economic theories impact businesses and consumers.

PLO 4: Interpret and apply business related theories and technology to problems, cases, or research papers.

PLO 5: Utilize appropriate software and prepare applicable business documentation.

PLO 6: Create and analyze financial information for management related decisions.

PLO 7: Formulate a marketing plan for a company that incorporates marketing concepts.

PLO 8: Develop a business plan for a new business venture.

Business Management Certificate #0916

PLO 1: Prepare financial information for management-related decisions.

PLO 2: Generate effective communication of ideas, concepts and terminology.

PLO 3: Apply business related theories to problems, cases, or research papers.

PLO 4: Create business documentation using appropriate software.

PLO 5: Formulate a company marketing plan using marketing concepts.

PLO 6: Develop a business plan for a new business venture.

Program Learning Outcomes

Business Operations – Entrepreneurship Certificate #0913

PLO 1: Prepare financial information for management-related decisions.

PLO 2: Generate effective communication of ideas, concepts and terminology.

PLO 3: Apply business related theories to problems, cases, or research papers.

PLO 4: Create business documentation using appropriate software.

PLO 5: Formulate a company marketing plan using marketing concepts.

PLO 6: Develop a business plan for a new business venture.

Marketing, Sales and Service - Entrepreneurship, A.S. Certificate #0817

Graduates of the program will be able to:

PLO 1: Identify various marketing strategies or service techniques.

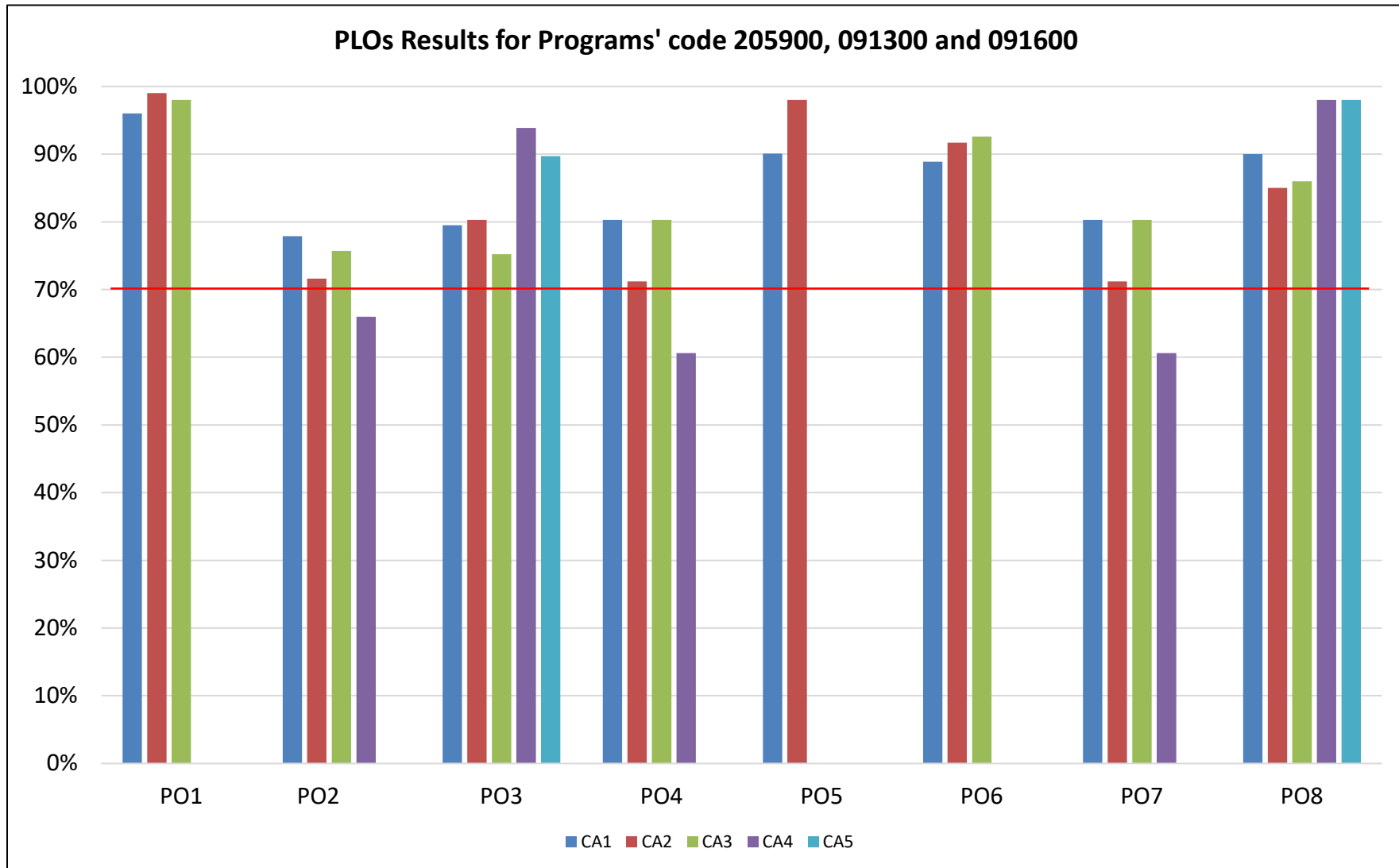
PLO 2: Demonstrate effective communication via marketing strategy.

PLO 3: Plan the components of a marketing strategy.

PLO 4: Develop a business plan.

Assessment Results – 2020-2021

#205900, #091300, #091600



CA: Critical Assignment

Program Learning Outcomes and Assessment Results – 2020-2021

Sales Entrepreneurship Certificate #081700

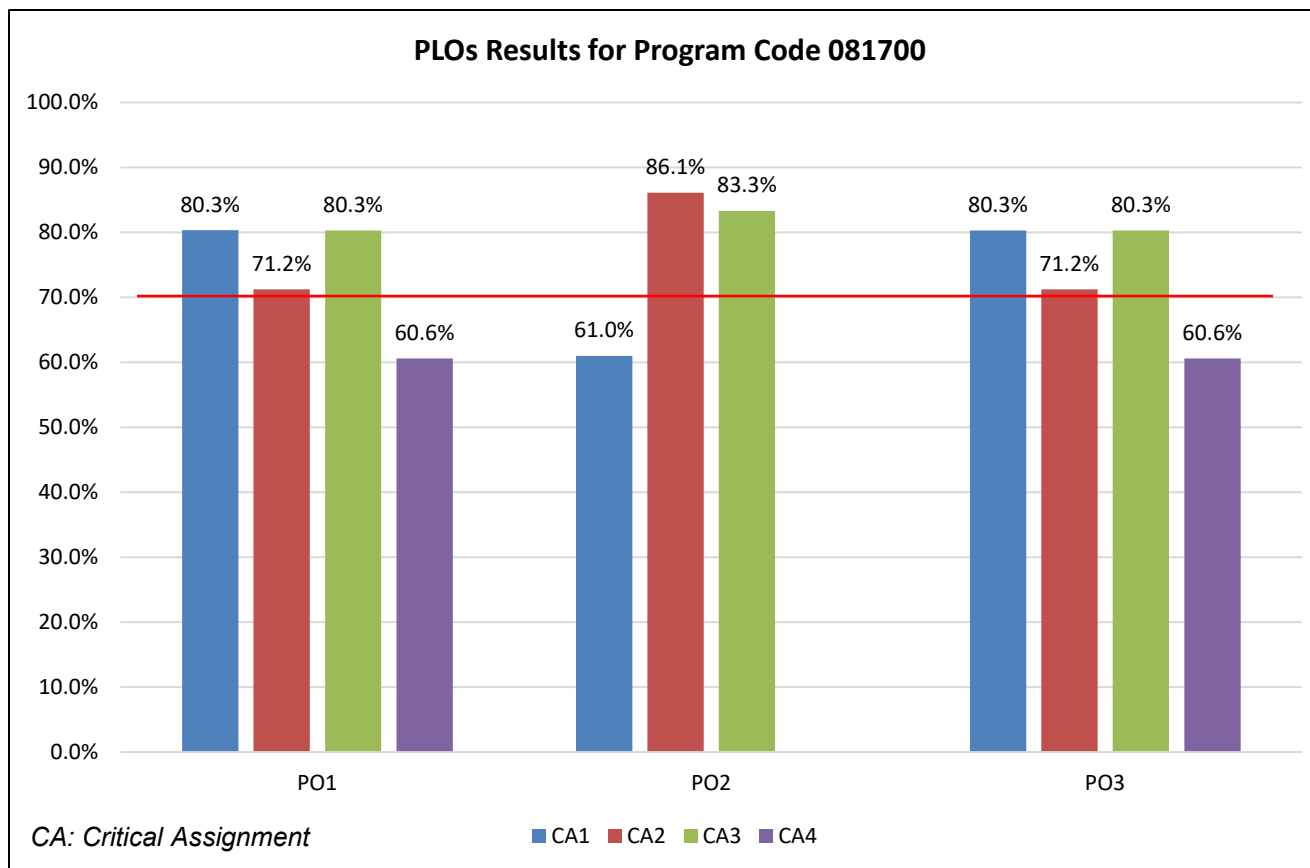
Graduates of the program will be able to:

PLO 1: Identify various marketing strategies or service techniques.

PLO 2: Demonstrate effective communication via marketing strategy.

PLO 3: Plan the components of a marketing strategy.

PLO 4: Develop a business plan.



Program Learning Outcomes AS Accounting Technology #208400

PLO 1: Demonstrate clear and effective communication

PLO 2: Solve business problems using critical thinking.

PLO 3: Identify and discuss legal and ethical issues in tax preparation, financial planning, and the business environment.

PLO 4: Use appropriate software and hardware to produce tax returns, financial plans, and financial reports.

PLO 5: Demonstrate a basic working knowledge of estate planning, investment planning and cash management.

PLO 6: Apply Generally Accepted Accounting Principles to record, summarize, and report business transactions.

PLO 7: Demonstrate an understanding of corporate finance in the field of business.

PLO 8: Identify sound measures of internal control and protection of business assets.

PLO 9: Demonstrate an understanding of the global business environment.

Program Learning Outcomes

Accounting Technology Operations – Tax Preparation - #093500

PLO 1: Demonstrate clear and effective communication

PLO 2: Solve business problems using critical thinking.

PLO 3: Identify and discuss legal and ethical issues in tax preparation, financial planning, and the business environment.

PLO 4: Use appropriate software and hardware to produce tax returns, financial plans, and financial reports.

PLO 5: Demonstrate a basic working knowledge of estate planning, investment planning and cash management.

PLO 6: Apply Generally Accepted Accounting Principles to record, summarize, and report business transactions.

AS Certificate – Accounting Applications/Computerized #094300

PLO 1: Demonstrate clear and effective communication

PLO 2: Solve business problems using critical thinking.

PLO 3: Identify and discuss legal and ethical issues in tax preparation, financial planning, and the business environment.

PLO 4: Use appropriate software and hardware to produce tax returns, financial plans, and financial reports.

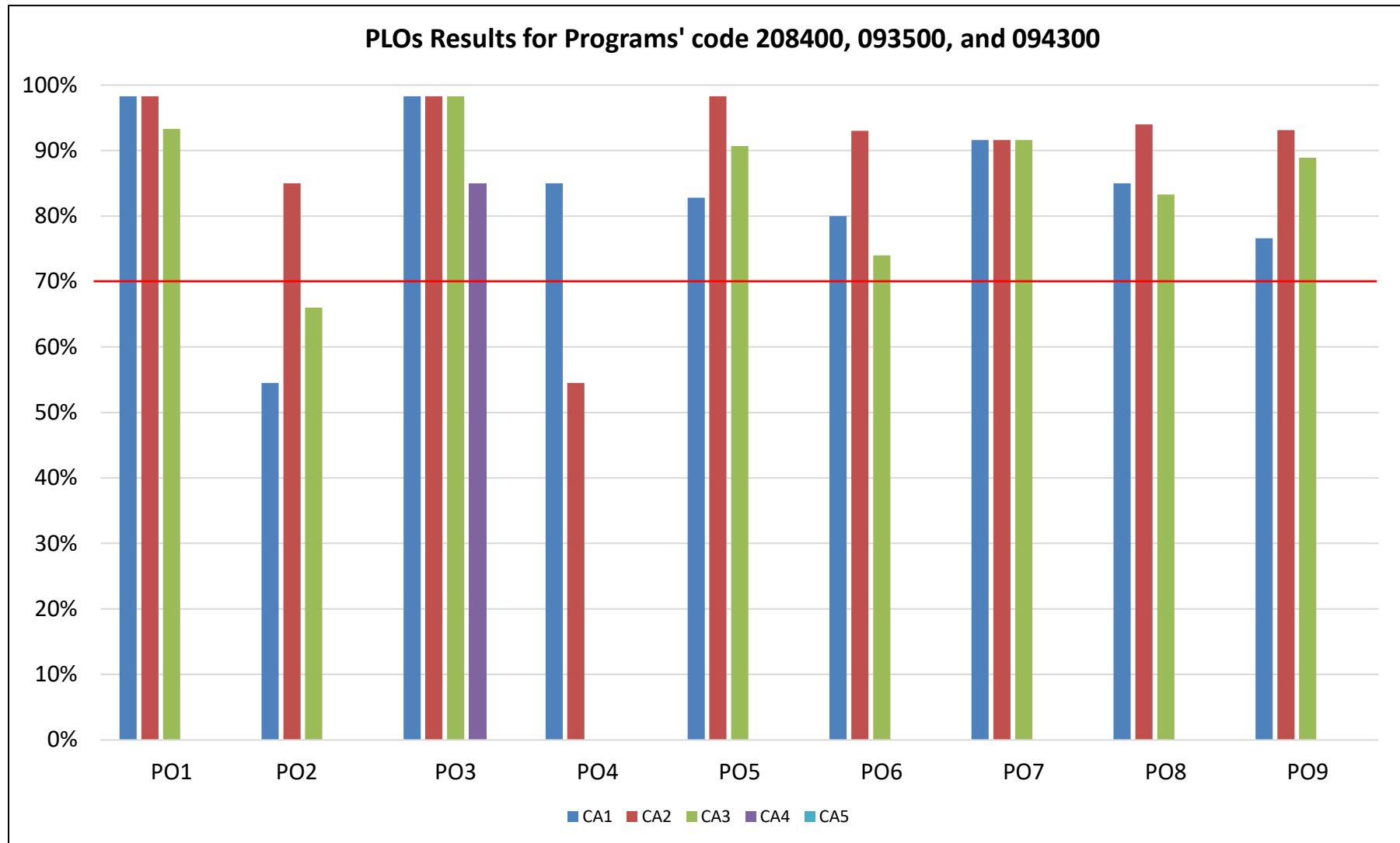
PLO 5: Demonstrate a basic working knowledge of estate planning, investment planning and cash management.

PLO 6: Apply Generally Accepted Accounting Principles to record, summarize, and report business transactions.

PLO 7: Demonstrate an understanding of corporate finance in the field of business.

Assessment Results – 2020-2021

#208400, #093500, #094300



CA: Critical Assignment

*: Results given for students that completed the course (No Ws or FNs included)

Program Learning Outcomes

AS Paralegal Studies (Legal Assisting) #206200

PLO 1: Communicate in a clear and effective manner.

PLO 2: Identify and apply ethical and professional standards of the paralegal profession.

PLO 3: Demonstrate ability to utilize the law library and electronic legal research to create well-written legal documents.

PLO 4: Apply knowledge of tort law, constitutional law, and criminal law concepts to analyze factual situations.

PLO 5: Demonstrate knowledge of all phases of litigation practice and procedure.

PLO 6: Examine real property law and its application to real property transactions.

PLO 7: Analyze issues related to estate planning and probate administration concepts and their application to probate procedures.

PLO 8: Identify the fundamental principles of the law of business organizations.

PLO 9: Explain how contract law and the Uniform Commercial Code impacts individuals and business entities.

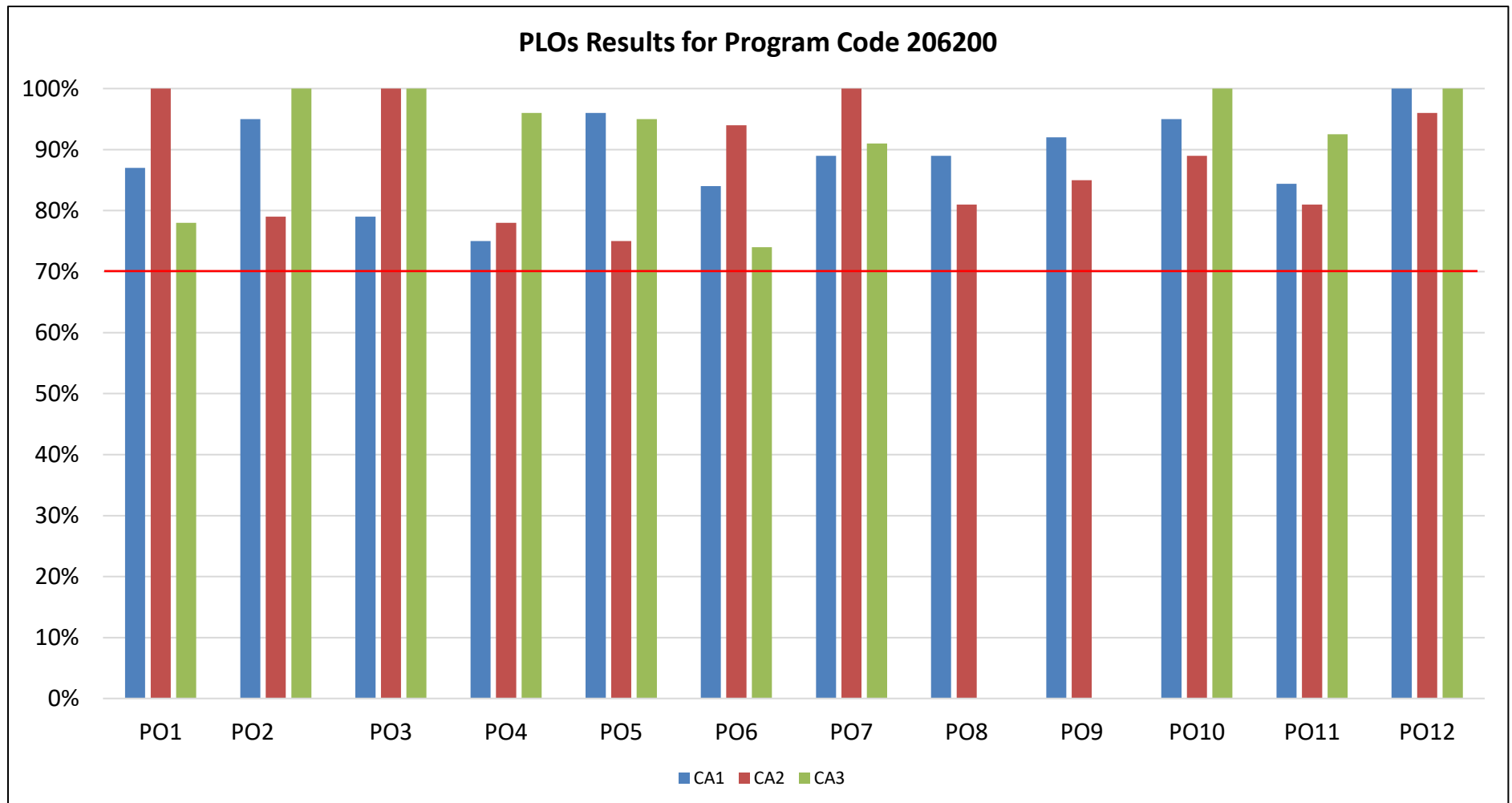
PLO 10: Demonstrate knowledge of entrepreneurship, management techniques and procedures.

PLO 11: Analyze family law situations by applying family law and procedure.

PLO 12: Identify and demonstrate employability skills.

Assessment Results – 2020-2021

AS Paralegal Studies (Legal Assisting) #206200



CA: Critical Assignment

Program Learning Outcomes and Assessment Results

AS Industrial Management #222100

PLO 1: Prepare financial information for management-related decisions.

PLO 2: Generate effective communication of ideas, concepts and terminology.

PLO 3: Apply business related theories to problems, cases, or research papers.

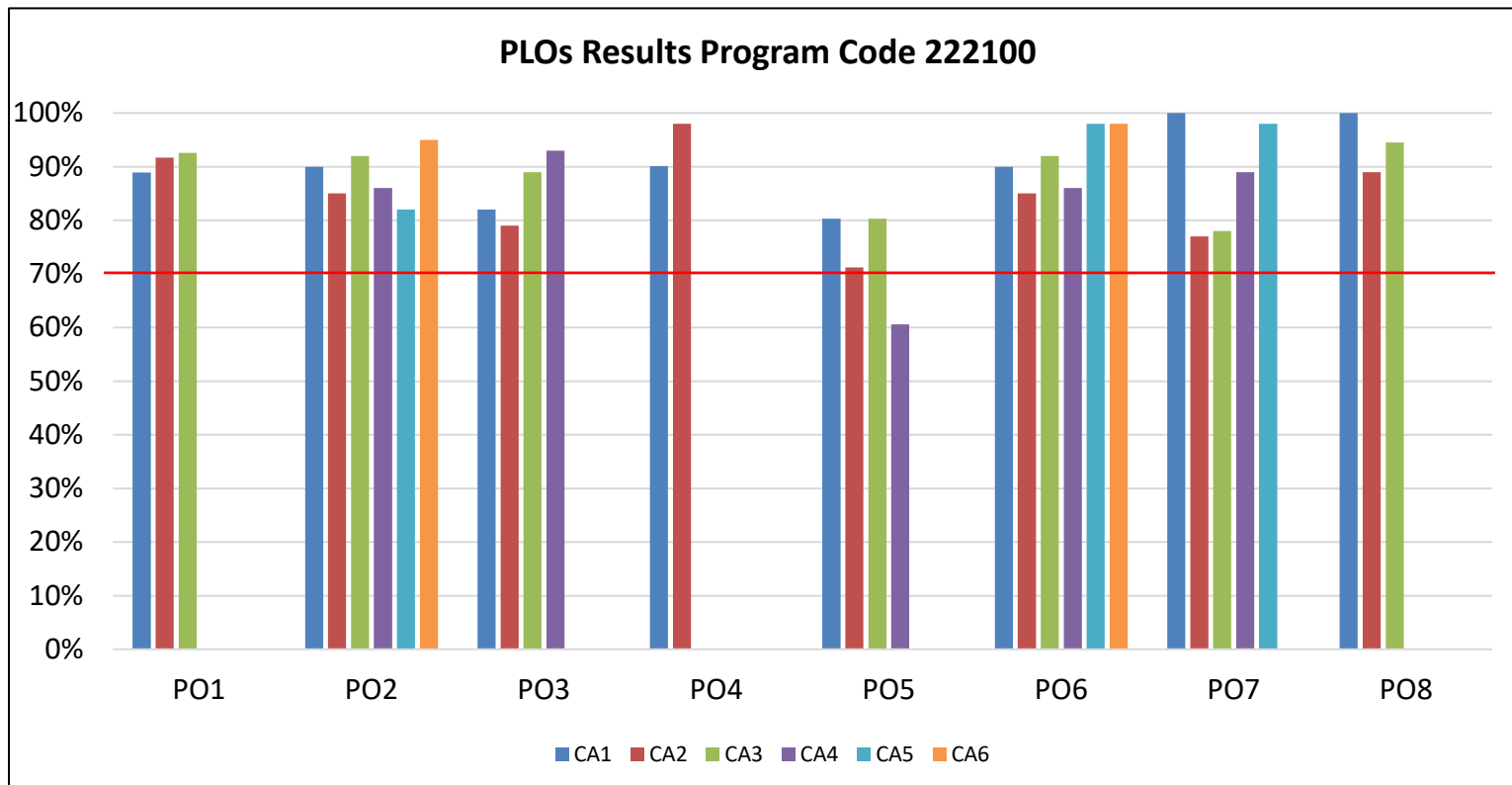
PLO 4: Create business documentation using appropriate software.

PLO 5: Formulate a company marketing plan using marketing concepts.

PLO 6: Develop a business plan for a new business venture.

PLO 7: Demonstrate proficiency in a technical field including theory, applications, troubleshooting and safety.

PLO 8: Demonstrate the ability to plan and initiate projects related to the field.



CA: Critical Assignment

Program Learning Outcomes

AS Office Administration #222900

PLO 1: Communicate in a clear and effective manner.

PLO 2: Perform business computations, records and office management skills.

PLO 3: Perform keyboarding and document processing activities.

PLO 4: Demonstrate knowledge of human relation skills.

PLO 5: Demonstrate employability skills.

PLO 6: Perform information processing and transmittal activities.

PLO 7: Develop leadership skills.

PLO 8: Perform consumer purchasing activities.

PLO 9: Perform decision making activities.

Certificate Office Management #091400

PLO 1: Communicate in a clear and effective manner.

PLO 2: Perform keyboarding and document processing activities.

PLO 3: Demonstrate knowledge of human relations skills.

PLO 4: Demonstrate employability skills.

PLO 5: Develop leadership skills.

PLO 6: Perform information processing and transmittal activities.

PLO 7: Perform decision-making activities as related to business software and the office environment.

PLO 8: Perform business computations, records and office management skills.

Program Learning Outcomes

Certificate Office Support (Technical) #092600

PLO 1: Communicate in a clear and effective manner.

PLO 2: Perform keyboarding and document processing activities.

PLO 3: Demonstrate knowledge of human relations.

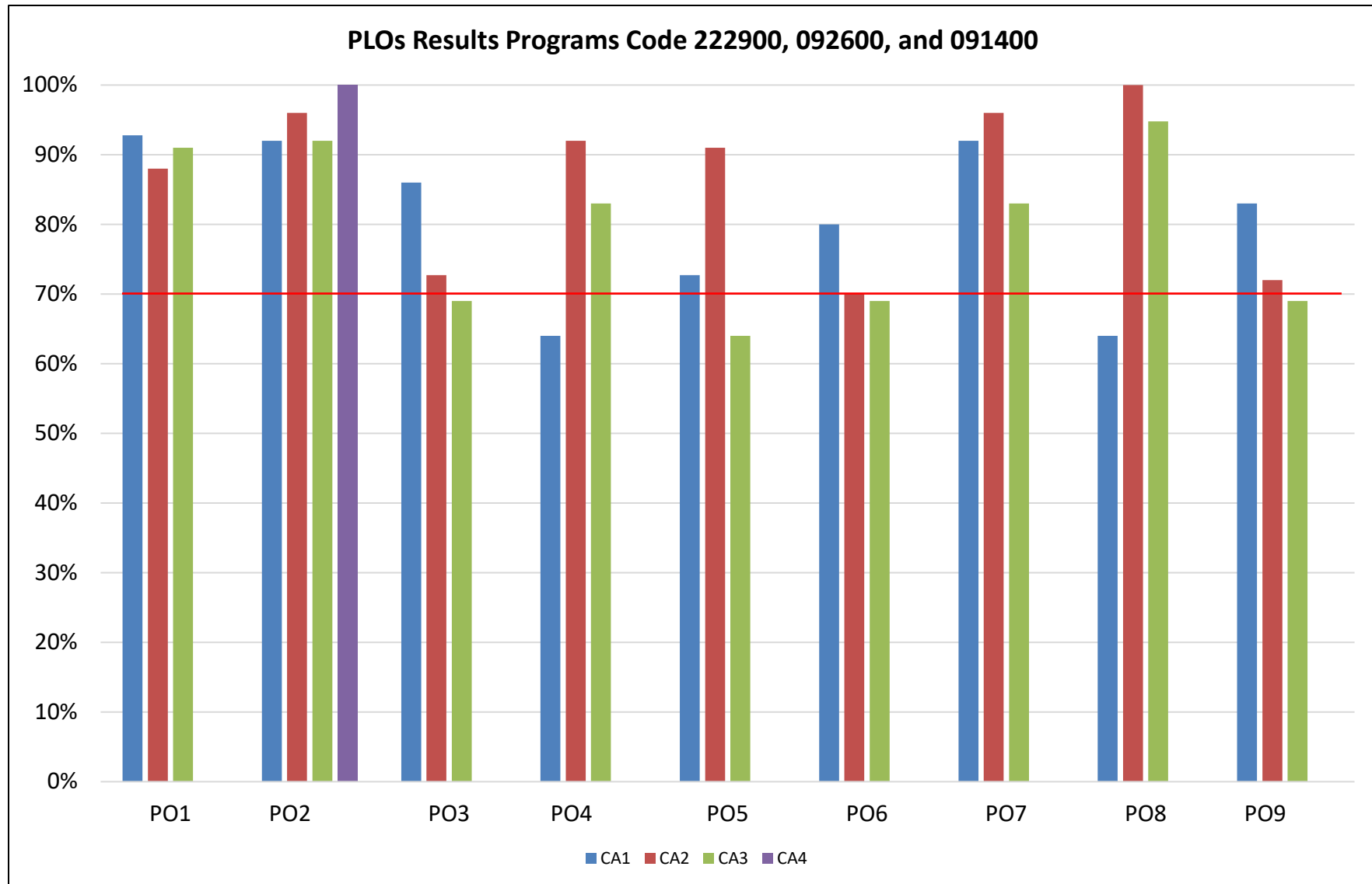
PLO 4: Demonstrate employability skills.

PLO 5: Perform information processing and transmittal activities.

PLO 6: Perform decision-making activities as related to business software and the office environment.

Assessment Results – 2020-2021

#222900, #092600, #091400



CA: Critical Assignment

Assessment Data 2019-2020 and 2020-2021 Programs and Institutional Learning Outcomes

| Program | Critical/ Creative Thinking | | Communication | | Cultural Literacy | | Information & Technical Literacy | |
|----------------------------------|-----------------------------|-------------|---------------|-------------|-------------------|-------------|----------------------------------|-----------|
| | 19/20 | 20/21 | 19/20 | 20/21 | 19/20 | 20/21 | 19/20 | 20/21 |
| 0817 - MARKETING, SALES, SER ENT | 68%-91% | 60.6%-80.3% | 79%-89% | 96%-100% | 62.5%-90% | 60.6%-80.3% | 79%-89% | 90.1%-98% |
| 0913 - BUSINESS OPER/ENTREPREN. | 68%-91% | 60.6%-80.3% | 79%-89% | 96%-100% | 62.5%-90% | 60.6%-80.3% | 79%-89% | 90.1%-98% |
| 0914 - OFFICE MANAGEMENT | 88%-94% | 83%-100% | 82% | 82% | 96%-100% | 94.4%-100% | 79%-94% | 68%-100% |
| 0916 - BUSINESS MANAGEMENT | 68%-91% | 60.6%-80.3% | 79%-89% | 96%-100% | 62.5%-90% | 60.6%-80.3% | 79%-89% | 90.1%-98% |
| 0926 - OFFICE SUPPORT-TECH. CER | 88%-94% | 83%-100% | 82% | 82% | 96%-100% | 94.4%-100% | 79%-94% | 68%-100% |
| 0935 - ACCOUNTING OPER-TAX PREP | 83%-91% | 74%-91% | 93.1%-97.6% | 93.3%-98.3% | 84%-91% | 66%-98.3% | 86%-100% | 54.5%-85% |
| 0943 - ACCOUNTING TECH MGMT | 83%-91% | 74%-91% | 93.1%-97.6% | 93.3%-98.3% | 84%-91% | 66%-98.3% | 86%-100% | 54.5%-85% |
| 2059 - BUSINESS ADMINISTRATION | 68%-91% | 60.6%-80.3% | 79%-89% | 96%-100% | 62.5%-90% | 60.6%-80.3% | 79%-89% | 90.1%-98% |
| 2062 - PARALEGAL-LEGAL ASST | 83.3%-100% | 79%-100% | 84%-100% | 97%-100% | 83%-94.7% | 66%-95% | 92%-100% | 79%-100% |
| 2084 - ACCOUNTING TECHNOLOGY | 83%-91% | 74%-91% | 93.1%-97.6% | 93.3%-98.3% | 84%-91% | 66%-98.3% | 86%-100% | 54.5%-85% |
| 2221 - INDUSTRIAL MGMT TECH | 68%-91% | 60.6%-80.3% | 83%-88% | 96%-100% | 68%-91% | 60.6%-80.3% | 76% | 90.1%-98% |
| 2229 - OFFICE ADMINISTRATION | 88%-94% | 83%-100% | 82% | 82% | 96%-100% | 94.4%-100% | 79%-94% | 68%-100% |

Headcount by Major

| Major | 2016-2017 | 2017-2018 | 2018-2019 | 2019-2020 | 2020-2021 |
|----------------------------------|-------------|-------------|-------------|-------------|------------|
| 0817 - MARKETING, SALES, SER ENT | 7 | 2 | 3 | 8 | 10 |
| 0913 - BUSINESS OPER/ENTREPREN. | 18 | 8 | 11 | 5 | 5 |
| 0914 - OFFICE MANAGEMENT | 10 | 12 | 10 | 16 | 20 |
| 0916 - BUSINESS MANAGEMENT | 84 | 46 | 57 | 54 | 56 |
| 0926 - OFFICE SUPPORT-TECH. CER | 11 | 1 | 3 | 3 | 11 |
| 0935 - ACCOUNTING OPER-TAX PREP | 13 | 4 | 5 | 7 | 7 |
| 0943 - ACCOUNTING TECH MGMT | 30 | 33 | 22 | 13 | 15 |
| 2059 - BUSINESS ADMINISTRATION | 315 | 322 | 326 | 289 | 312 |
| 2062 - PARALEGAL-LEGAL ASST | 122 | 97 | 89 | 98 | 88 |
| 2084 - ACCOUNTING TECHNOLOGY | 79 | 91 | 103 | 98 | 96 |
| 2221 - INDUSTRIAL MGMT TECH | 10 | 8 | 9 | 19 | 13 |
| 2229 - OFFICE ADMINISTRATION | 51 | 65 | 63 | 51 | 43 |
| Total | 819* | 742* | 741* | 695* | 672 |

**total includes the Broadcast TV programs*

Graduates

| Major | 2016-2017 | 2017-2018 | 2018-2019 | 2019-2020 | 2020-2021 |
|----------------------------------|------------|------------|------------|------------|------------|
| 0817 - MARKETING, SALES, SER ENT | 8 | 34 | 2 | 16 | 25 |
| 0913 - BUSINESS OPER/ENTREPREN. | 55 | 52 | 3 | 68 | 64 |
| 0914 - OFFICE MANAGEMENT | 4 | 25 | 5 | 9 | 15 |
| 0916 - BUSINESS MANAGEMENT | | 43 | 8 | 51 | 62 |
| 0919 - OFFICE MGMT-MEDICAL | 3 | 4 | | | |
| 0926 - OFFICE SUPPORT-TECH. CER | 3 | 26 | 1 | 5 | 14 |
| 0935 - ACCOUNTING OPER-TAX PREP | 4 | 12 | | 31 | 28 |
| 0943 - ACCOUNTING TECH MGMT | 4 | 15 | 9 | 28 | 24 |
| 2059 - BUSINESS ADMINISTRATION | 26 | 21 | 26 | 27 | 38 |
| 2062 - PARALEGAL-LEGAL ASST | 23 | 15 | 11 | 12 | 14 |
| 2084 - ACCOUNTING TECHNOLOGY | 6 | 10 | 18 | 21 | 21 |
| 2221 - INDUSTRIAL MGMT TECH | 2 | 1 | 1 | 4 | 5 |
| 2228 - OFFICE ADM-MED SYSTEMS | 5 | 7 | 2 | | |
| 2229 - OFFICE ADMINISTRATION | 6 | 9 | 14 | 15 | 11 |
| Total | 159 | 285 | 107 | 312 | 321 |

Blank cells or missing years indicate no graduates.

Number of Graduates by Race/Ethnicity (1 of 2)

| Program | 2020-21 | 2019-20 | 2018-19 |
|------------------------------------------------|-----------|-----------|----------|
| 081700 - Sales / Entrepreneurship Cert. | 25 | 16 | 2 |
| Asian | 1 | | |
| Black | 4 | 1 | |
| Hispanic/Latino | 5 | 3 | |
| Two or More Races | 2 | | |
| White | 13 | 12 | 2 |
| 091300 - Business Operations Cert. | 64 | 68 | 3 |
| Asian | 1 | 1 | |
| Black | 11 | 7 | 1 |
| Hispanic/Latino | 8 | 11 | 1 |
| Native Hawaiian | | 1 | |
| Two or More Races | 2 | 5 | 1 |
| Unknown | | 1 | |
| White | 42 | 42 | |
| 091400 – Office Management Cert. | 15 | | |
| Black | 1 | | |
| Hispanic/Latino | 1 | | |
| Two or More Races | 1 | | |
| Unknown | 2 | | |
| White | 10 | | |
| 0916 - BUSINESS MANAGEMENT | 62 | 51 | 1 |
| Asian | 1 | | |
| Black | 8 | 6 | |
| Hispanic | 10 | 7 | |
| Native Hawaiian | | 1 | |
| Two or More Races | 2 | 3 | |
| Unknown | | 2 | |
| White | 41 | 32 | 1 |

| Program | 2020-21 | 2019-20 | 2018-19 |
|------------------------------------------------|-----------|-----------|-----------|
| 092600 – Office Support Tech Cert | 14 | 4 | 1 |
| Black | | | 1 |
| Hispanic/Latino | 2 | 1 | |
| Two or More Races | 1 | | |
| Unknown | 1 | 1 | |
| White | 10 | 3 | |
| 093500 – Accounting Tech – Tax Cert | 28 | 31 | |
| Black | 4 | 3 | |
| Hispanic/Latino | 5 | 4 | |
| White | 19 | 24 | |
| 094300 – Accounting Tech Management | 24 | 28 | 2 |
| Black | 5 | 3 | |
| Hispanic/Latino | 4 | 4 | 1 |
| White | 15 | 21 | 1 |
| 205900 - Business Administration A.S. | 38 | 27 | 26 |
| Asian | 1 | | 3 |
| Black | 5 | 1 | 3 |
| Hispanic/Latino | 3 | 7 | 1 |
| Native Hawaiian | | 1 | |
| Two or More Races | 1 | 2 | |
| Unknown | | 2 | |
| White | 28 | 14 | 19 |
| 206200 - Paralegal - Legal Assist. A.S. | 14 | 13 | 11 |
| American Indian/Alas | 1 | | |
| Black | 1 | | 1 |
| Hispanic/Latino | 1 | 5 | |
| White | 11 | 7 | 10 |

Number of Graduates by Race/Ethnicity (2 of 2)

| Program | 2020-21 | 2019-20 | 2018-19 |
|-----------------------------------------------|------------|------------|-----------|
| 208400 - Accounting Technology A.S. | 21 | 21 | 18 |
| Black | 2 | 1 | 3 |
| Hispanic/Latino | 4 | 4 | 1 |
| Two or More Races | | 1 | |
| White | 15 | 15 | 14 |
| 222100 - Industrial Mgmt Tech. A.S. | 5 | 4 | 1 |
| Black | 1 | | |
| Hispanic/Latino | 1 | 1 | |
| White | 3 | 3 | 1 |
| 222900 - Office Adm AS (Gen, Leg, Med) | 11 | 15 | 14 |
| Black | | 3 | 4 |
| Hispanic/Latino | 1 | 2 | 1 |
| Two or More Races | 1 | | 1 |
| Unknown | 1 | 1 | 1 |
| White | 8 | 9 | 7 |
| Grand Total | 321 | 278 | 79 |

Time to Degree

| Major | Average of Yrs to Degree (2019-2020 cohort) | Average of Yrs to Degree (2020-2021 cohort) |
|----------------------------------|------------------------------------------------|------------------------------------------------|
| 205900 - BUSINESS ADMINISTRATION | 1.99 | 2.28 |
| 206200 - PARALEGAL-LEGAL ASST | 2.22 | 2.23 |
| 208400 - ACCOUNTING TECHNOLOGY | 1.95 | 1.54 |
| 222100 - INDUSTRIAL MGMT TECH | 1.48 | 1.3 |
| 222900 - OFFICE ADMINISTRATION | 3.58 | 2.02 |

Graduation Rates (1 of 2)

| Major | Fall Cohort Year | # in Cohort | 150% Graduates | 150% Graduation Rate | 200% Graduates | 200% Graduation Rate |
|---------------------------------|------------------------|-------------|-------------------|----------------------------|-------------------|----------------------------|
| 205900- Business Administration | 2014 | 140 | 9 | 6.4% | 12 | 8.6% |
| | 2015 | 104 | 10 | 9.6% | 12 | 11.5% |
| | 2016 | 135 | 21 | 15.6% | 24 | 17.8% |
| | 2017 –200% In progress | 109 | 12 | 11.0% | 14 | 12.8% |
| | 2018 – In progress | 141 | 20 | 14.2% | 20 | 14.2% |
| 206200- Paralegal Studies | 2014 | 30 | 8 | 26.7% | 10 | 33.3% |
| | 2015 | 35 | 12 | 34.3% | 15 | 42.9% |
| | 2016 | 38 | 8 | 21.1% | 14 | 36.8% |
| | 2017 –200% In progress | 14 | 2 | 14.3% | 3 | 21.4% |
| | 2018 – In progress | 25 | 6 | 24.0% | 6 | 24.0% |
| 208400- Accounting Technology | 2014 | 31 | 8 | 25.8% | 10 | 32.3% |
| | 2015 | 26 | 6 | 23.1% | 7 | 26.9% |
| | 2016 | 27 | 8 | 29.6% | 8 | 29.6% |
| | 2017 –200% In progress | 28 | 7 | 25.0% | 8 | 28.6% |
| | 2018 – In progress | 32 | 13 | 40.6% | 13 | 40.6% |

Graduation Rates (2 of 2)

| Major | Fall Cohort Year | # in Cohort | 150% Graduates | 150% Graduation Rate | 200% Graduates | 200% Graduation Rate |
|-----------------------------------------------------------------|-------------------------|-------------|-------------------|----------------------------|-------------------|----------------------------|
| 2221- Industrial Management | 2014 | 6 | 1 | 16.7% | 1 | 16.7% |
| | 2015 | 1 | 0 | 0% | 0 | 0% |
| | 2016 | 3 | 0 | 0% | 1 | 33.3% |
| | 2017 – 200% In progress | 4 | 2 | 50.0% | 2 | 50.0% |
| | 2018 – In progress | | | | | |
| 2228 - Office Administration- (Medical Systems Option) | 2014 | 10 | 0 | 0% | 1 | 10% |
| | 2015 | 14 | 2 | 14.3% | 3 | 21.4% |
| | 2016 – 200% In progress | 6 | 3 | 50% | 3 | 50% |
| 2229- Office Administration (Gen, Leg, Med) | 2014 | 21 | 4 | 19% | 4 | 19% |
| | 2015 | 8 | 4 | 50.0% | 4 | 50.0% |
| | 2016 | 9 | 5 | 55.6% | 5 | 55.6% |
| | 2017 – 200% In progress | 27 | 13 | 48.1% | 13 | 48.1% |
| | 2018 – In progress | 19 | 5 | 26.3% | 5 | 26.3% |

Graduation Rates by Race/Ethnicity (1 of 3)

| Major | Fall Cohort Year | Race/ Ethnicity | # in Cohort | 150% Graduates | 150% Graduation Rate | 200% Graduates | 200% Graduation Rate |
|----------------------------------|----------------------------|---------------------|-------------|-------------------|-------------------------|-------------------|-------------------------|
| 2059- Business Administration | 2016 | Asian | 2 | 0 | 0% | 0 | 0% |
| | | Black | 33 | 2 | 6.1% | 2 | 6.1% |
| | | Hispanic | 19 | 1 | 5.3% | 1 | 5.3% |
| | | Native Hawaiian/Pac | 1 | 0 | 0% | 1 | 100% |
| | | Two or More Races | 3 | 0 | 0% | 0 | 0% |
| | | White | 77 | 18 | 23.4% | 20 | 26% |
| | 2017 –200% In progress | Asian | 1 | 0 | 0% | 0 | 0% |
| | | Black | 26 | 2 | 7.7% | 2 | 7.7% |
| | | Hispanic | 17 | 2 | 11.8% | 3 | 17.6% |
| | | Two or More Races | 1 | 0 | 0% | 0 | 0% |
| | | White | 64 | 8 | 12.5% | 9 | 14.1% |
| | 2018 – In progress | Asian | 2 | 1 | 50% | 1 | 50% |
| | | Black | 22 | 0 | 0% | 0 | 0% |
| | | Hispanic | 23 | 1 | 4.3% | 1 | 4.3% |
| | | Two or More Races | 10 | 2 | 20% | 2 | 20% |
| | | Unknown | 3 | 1 | 33.3% | 1 | 33.3% |
| | | White | 81 | 15 | 18.5% | 15 | 18.5% |
| | 2062- Paralegal Studies | 2016 | Black | 6 | 3 | 50% | 3 |
| Hispanic | | | 5 | 0 | 0% | 2 | 40% |
| White | | | 27 | 5 | 18.5% | 9 | 33.3% |
| 2017 –200% In progress | | Black | 2 | 0 | 0% | 0 | 0% |
| | | Hispanic | 2 | 0 | 0% | 0 | 0% |
| | | White | 10 | 2 | 20% | 3 | 30% |
| 2018 – In progress | | Black | 4 | 0 | 0% | 0 | 0% |
| | | Hispanic | 4 | 0 | 0% | 0 | 0% |
| | | Two or More Races | 2 | 0 | 0% | 0 | 0% |
| | | White | 15 | 6 | 40% | 6 | 40% |

Graduation Rates by Race/Ethnicity (2 of 3)

| Major | Fall Cohort Year | Race/ Ethnicity | # in Cohort | 150% Graduates | 150% Graduation Rate | 200% Graduates | 200% Graduation Rate |
|--------------------------------|----------------------------|-------------------|-------------|-------------------|-------------------------|-------------------|-------------------------|
| 2084- Accounting Technology | 2015 | Asian | 1 | 0 | 0% | 0 | 0% |
| | | Black | 3 | 1 | 33.3% | 1 | 33.3% |
| | | Hispanic | 2 | 1 | 50% | 1 | 50% |
| | | Two or More Races | 1 | 0 | 0% | 0 | 0% |
| | | White | 19 | 4 | 21.1% | 5 | 26.3% |
| | 2016 | Black | 5 | 2 | 40% | 2 | 40% |
| | | Hispanic | 4 | 1 | 25% | 1 | 25% |
| | | Two or More Races | 1 | 0 | 0% | 0 | 0% |
| | | Unknown | 1 | 1 | 100% | 1 | 100% |
| | | White | 16 | 4 | 25% | 4 | 25% |
| | 2017 – 200% In progress | Black | 2 | 0 | 0% | 0 | 0% |
| | | Hispanic | 5 | 1 | 20% | 1 | 20% |
| | | Two or More Races | 1 | 0 | 0% | 0 | 0% |
| | | Unknown | 1 | 0 | 0% | 0 | 0% |
| | | White | 19 | 6 | 31.6% | 7 | 36.8% |
| 2018 – In progress | Asian | 1 | 0 | 0% | 0 | 0% | |
| | Black | 7 | 3 | 42.9% | 3 | 42.9% | |
| | Hispanic | 7 | 4 | 57.1% | 4 | 57.1% | |
| | Two or More Races | 1 | 0 | 0% | 0 | 0% | |
| | White | 16 | 6 | 37.5% | 6 | 37.5% | |
| 2221- Industrial Management | 2015 | White | 1 | 0 | 0% | 0 | 0% |
| | 2016 | Black | 1 | 0 | 0% | 0 | 0% |
| | | White | 2 | 0 | 0% | 1 | 50% |
| | 2017 – 200% In progress | Hispanic | 1 | 1 | 100% | 1 | 100% |
| White | | 2 | 1 | 50% | 1 | 50% | |

Graduation Rates by Race/Ethnicity (3 of 3)

| Major | Fall Cohort Year | Race/ Ethnicity | # in Cohort | 150% Graduates | 150% Graduation Rate | 200% Graduates | 200% Graduation Rate |
|--------------------------------------------------------|-------------------------|-----------------|-------------|-------------------|----------------------------|-------------------|----------------------------|
| 2228 - Office Administration- (Medical Systems Option) | 2015 | Black | 4 | 0 | 0% | 0 | 0% |
| | | Hispanic | 1 | 0 | 0% | 0 | 0% |
| | | White | 9 | 2 | 22.2% | 3 | 33.3% |
| | 2016 –200% In progress | Black | 1 | 0 | 0% | 0 | 0% |
| | | Hispanic | 2 | 1 | 50% | 1 | 50% |
| | | White | 3 | 2 | 66.7% | 2 | 66.7% |
| 2229- Office Administration (Gen, Leg, Med) | 2015 | Black | 1 | 0 | 0% | 0 | 0% |
| | | White | 7 | 4 | 57.1% | 4 | 57.1% |
| | 2016 | Black | 2 | 1 | 50% | 1 | 50% |
| | | Hispanic | 1 | 0 | 0% | 0 | 0% |
| | | White | 6 | 4 | 66.7% | 4 | 66.7% |
| | 2017 - 200% In progress | Black | 3 | 0 | 0% | 0 | 0% |
| | | Hispanic | 4 | 1 | 25% | 1 | 25% |
| | | Unknown | 2 | 2 | 100% | 2 | 100% |
| | | White | 18 | 10 | 55.6% | 10 | 55.6% |
| | 2018 - In progress | Black | 6 | 1 | 16.7% | 1 | 16.7% |
| Hispanic | | 1 | 0 | 0% | 0 | 0% | |
| White | | 12 | 4 | 33.3% | 4 | 33.3% | |

Graduation Rates by Gender (1 of 2)

| Major | Fall Cohort Year | Gender | # in Cohort | 150% Graduates | 150% Graduation Rate | 200% Graduates | 200% Graduation Rate |
|-------------------------------|-------------------------|-----------|-------------|----------------|----------------------|----------------|----------------------|
| 2059- Business Administration | 2015 | Female | 53 | 4 | 7.6% | 6 | 11.3% |
| | | Male | 49 | 6 | 12.2% | 6 | 12.2% |
| | | Unknown | 2 | 0 | 0% | 0 | 0% |
| | 2016 | Female | 67 | 14 | 20.9% | 16 | 23.9% |
| | | Male | 65 | 7 | 10.8% | 8 | 12.3% |
| | | PrefNoAns | 2 | 0 | 0% | 0 | 0% |
| | | Unknown | 1 | 0 | 0% | 0 | 0% |
| | 2017 – 200% In progress | Female | 60 | 7 | 11.7% | 9 | 15% |
| | | Male | 46 | 5 | 10.9% | 5 | 10.9% |
| | | PrefNoAns | 1 | 0 | 0% | 0 | 0% |
| | | Unknown | 2 | 0 | 0% | 0 | 0% |
| | 2018 – In progress | Female | 84 | 11 | 13.1% | 11 | 13.1% |
| | | Male | 50 | 7 | 14% | 7 | 14% |
| | | PrefNoAns | 6 | 2 | 33.3% | 2 | 33.3% |
| | | Unknown | 1 | 0 | 0% | 0 | 0% |
| | 2062- Paralegal Studies | 2015 | Female | 29 | 9 | 31% | 12 |
| Male | | | 4 | 2 | 50% | 2 | 50% |
| PrefNoAns | | | 1 | 0 | 0% | 0 | 0% |
| Unknown | | | 1 | 1 | 100% | 1 | 100% |
| 2016 | | Female | 33 | 8 | 24.2% | 12 | 36.4% |
| | | Male | 4 | 0 | 0% | 1 | 25% |
| | | Unknown | 1 | 0 | 0% | 1 | 100% |
| 2017 – 200% In progress | | Female | 13 | 2 | 15.4% | 3 | 23.1% |
| | | Male | 1 | 0 | 0% | 0 | 0% |
| 2018 – In progress | | Female | 21 | 5 | 23.8% | 5 | 23.8% |
| | | Male | 4 | 1 | 25% | 1 | 25% |
| 2084- Accounting Technology | | 2015 | Female | 22 | 6 | 27.3% | 7 |
| | Male | | 4 | 0 | 0% | 0 | 0% |
| | 2016 | Female | 17 | 6 | 35.3% | 6 | 35.3% |
| | | Male | 10 | 2 | 20% | 2 | 20% |
| | 2017 – 200% In progress | Female | 24 | 6 | 25% | 7 | 29.2% |
| | | Male | 4 | 1 | 25% | 1 | 25% |
| | 2018 – In progress | Female | 28 | 10 | 35.7% | 10 | 35.7% |
| | | Male | 4 | 3 | 75% | 3 | 75% |

Graduation Rates by Gender (2 of 2)

| Major | Fall Cohort Year | Gender | # in Cohort | 150% Graduates | 150% Graduation Rate | 200% Graduates | 200% Graduation Rate |
|---------------------------------------------------|-------------------------|-----------|-------------|-------------------|----------------------------|-------------------|----------------------------|
| 2221- Industrial Management | 2015 | Male | 1 | 0 | 0% | 0 | 0% |
| | 2016 | Male | 3 | 0 | 0% | 1 | 33.3% |
| | 2017 – 200% In progress | Female | 1 | 1 | 100% | 1 | 100% |
| | | Male | 2 | 1 | 50% | 1 | 50% |
| 2229- Office Administration (Gen, Leg, Med) | 2015 | Female | 8 | 4 | 50% | 4 | 50% |
| | 2016 | Female | 4 | 2 | 50% | 2 | 50% |
| | | Male | 1 | 0 | 0% | 0 | 0% |
| | | PrefNoAns | 2 | 1 | 50% | 1 | 50% |
| | | Unknown | 2 | 2 | 100% | 2 | 100% |
| | 2017 – 200% In progress | Female | 24 | 12 | 50% | 12 | 50% |
| | | Male | 2 | 1 | 50% | 1 | 50% |
| | | PrefNoAns | 1 | 0 | 0% | 0 | 0% |
| | 2018 – In progress | Female | 16 | 3 | 18.8% | 3 | 18.8% |
| | | Male | 3 | 2 | 66.7% | 2 | 66.7% |
| 2229 – Office Administration | 2015 | Female | 4 | 0 | 0% | 0 | 0% |
| | 2016 – 200% in progress | Female | 4 | 1 | 25% | 1 | 25% |

Retention Rates (1 of 2)

| Program and Cohort Year | | Registered | Exclusions | Adjusted Cohort | Retained by DSC | | Retained by Program | | DSC Total Retained |
|------------------------------|------|------------|------------|-----------------|-----------------|------|---------------------|-------|--------------------|
| | | | | | N | % | N | % | |
| 2059 BUSINESS ADMINISTRATION | 2015 | 205 | 4 | 201 | 4 | 2% | 86 | 43% | 45% |
| | 2016 | 224 | 25 | 199 | 13 | 7% | 77 | 39% | 45% |
| | 2017 | 212 | 19 | 193 | 15 | 7.8% | 74 | 38.3% | 46.1% |
| | 2018 | 230 | 23 | 207 | 7 | 3.4% | 106 | 51.2% | 54.6% |
| | 2019 | 251 | 26 | 225 | 7 | 3.1% | 103 | 45.8% | 48.9% |
| 2062 PARALEGAL-LEGAL ASST | 2015 | 109 | 20 | 89 | 7 | 8% | 50 | 56% | 64% |
| | 2016 | 93 | 19 | 74 | 4 | 5% | 39 | 53% | 58% |
| | 2017 | 64 | 16 | 48 | 3 | 6.3% | 25 | 52.1% | 58.3% |
| | 2018 | 69 | 9 | 60 | 1 | 1.7% | 38 | 63.3% | 65% |
| | 2019 | 83 | 15 | 68 | 2 | 2.9% | 39 | 57.4% | 60.3% |
| 2084 ACCOUNTING TECHNOLOGY | 2015 | 58 | 5 | 53 | 4 | 8% | 26 | 49% | 57% |
| | 2016 | 60 | 5 | 55 | 1 | 2% | 33 | 60% | 62% |
| | 2017 | 67 | 13 | 54 | 3 | 5.6% | 30 | 55.6% | 61.1% |
| | 2018 | 72 | 16 | 56 | 0 | 0% | 32 | 57.1% | 57.1% |
| | 2019 | 72 | 22 | 50 | 19 | 2% | 30 | 60% | 62% |

Registered - Includes all students enrolled in the fall term of the specified year, with the specified program as their primary major.

Exclusions - Includes students who are deceased or graduated fall of the specified year or the following spring or summer.

Not retained - Students who were not registered the following fall term.

Retained by DSC - Students who were still registered at DSC the following fall but with a different primary major.

Retained by Program - Students who were registered the following fall with the same primary major.

Retention Rates (2 of 2)

| Program and Cohort Year | | Registered | Exclusions | Adjusted Cohort | Retained by DSC | | Retained by Program | | DSC Total Retained |
|-----------------------------|------|------------|------------|-----------------|-----------------|-------|---------------------|-------|--------------------|
| | | | | | N | % | N | % | |
| 2221 INDUSTRIAL MGMT TECH | 2015 | 8 | 1 | 7 | 1 | 14% | 5 | 71% | 85% |
| | 2016 | 7 | 2 | 5 | 0 | 0% | 2 | 40% | 40% |
| | 2017 | 5 | 0 | 5 | 0 | 0% | 4 | 80% | 80% |
| | 2018 | 6 | 2 | 4 | 1 | 25% | 3 | 75% | 100% |
| | 2019 | 13 | 5 | 8 | 0 | 0% | 4 | 50% | 50% |
| 2228 OFFICE ADM-MED SYSTEMS | 2014 | 26 | 2 | 24 | 3 | 16% | 12 | 48% | 64% |
| | 2015 | 21 | 0 | 21 | 1 | 5% | 10 | 48% | 53% |
| | 2016 | 27 | 6 | 21 | 1 | 5% | 9 | 43% | 48% |
| | 2017 | 13 | 6 | 7 | 1 | 14.3% | 2 | 28.6% | 42.9% |
| 2229 OFFICE ADMINISTRATION | 2015 | 33 | 2 | 31 | 2 | 6% | 18 | 58% | 64% |
| | 2016 | 40 | 4 | 36 | 0 | 0% | 22 | 61% | 61% |
| | 2017 | 52 | 11 | 41 | 2 | 4.9% | 28 | 68.3% | 73.2% |
| | 2018 | 51 | 12 | 39 | 1 | 2.6% | 19 | 48.7% | 51.3% |
| | 2019 | 46 | 14 | 32 | 1 | 3.1% | 15 | 46.9% | 52.7% |

Registered - Includes all students enrolled in the fall term of the specified year, with the specified program as their primary major.

Exclusions - Includes students who are deceased or graduated fall of the specified year or the following spring or summer.

Not retained - Students who were not registered the following fall term.

Retained by DSC - Students who were still registered at DSC the following fall but with a different primary major.

Retained by Program - Students who were registered the following fall with the same primary major.

Retention Rates by Race/Ethnicity (1 of 3)

| Major | Fall Term | Race/Ethnicity | Registered | Exclusions | Adjusted Cohort | Retained by Program | |
|------------------------------|-----------|----------------------|------------|------------|-----------------|---------------------|--------|
| | | | | | | N | % |
| 2059 BUSINESS ADMINISTRATION | 2017 | Asian | 4 | 0 | 4* | 2 | 50.0% |
| | | Black | 47 | 3 | 44* | 14 | 31.8% |
| | | Hispanic | 32 | 3 | 29 | 9 | 31.0% |
| | | Two or More Races | 4 | 0 | 4 | 2 | 50.0% |
| | | Unknown | 1 | 0 | 1 | 0 | 0.0% |
| | | White | 124 | 13 | 121* | 47 | 42.3% |
| | 2018 | Am. Ind. | 1 | 0 | 1 | 1 | 100.0% |
| | | Asian | 3 | 1 | 2 | 2 | 100.0% |
| | | Black | 39 | 3 | 36 | 17 | 47.2% |
| | | Hispanic | 34 | 1 | 33* | 18 | 54.5% |
| | | Native Hawaiian | 1 | 0 | 1 | 1 | 100.0% |
| | | Two or More Races | 11 | 1 | 10 | 4 | 40.0% |
| | | Unknown | 3 | 0 | 3 | 2 | 66.7% |
| | White | 138 | 17 | 121* | 61 | 50.4% | |
| | 2019 | Am. Ind. | 1 | 0 | 1 | 1 | 100.0% |
| | | Asian | 3 | 1 | 2 | 2 | 100.0% |
| | | Black | 49 | 2 | 47* | 22 | 46.8% |
| | | Hispanic | 53 | 6 | 47* | 16 | 34.0% |
| | | Native Hawaiian | 1 | 1 | 0 | | |
| | | Two or More Races | 8 | 1 | 7 | 6 | 85.7% |
| | | Unknown | 6 | 1 | 5 | 2 | 40.0% |
| White | 130 | 14 | 116* | 54 | 46.6% | | |
| 2062 PARALEGAL-LEGAL ASST | 2017 | Am. Ind. | 1 | 0 | 1 | 1 | 100.0% |
| | | Black | 9 | 3 | 6 | 2 | 33.3% |
| | | Hispanic | 8 | 1 | 7* | 4 | 57.1% |
| | | Two or More Races | 2 | 0 | 2 | 1 | 50.0% |
| | | Unknown | 1 | 1 | 0 | | |
| | | White | 43 | 11 | 32* | 17 | 53.1% |
| | 2018 | Am. Ind. | 1 | 0 | 1 | 1 | 100.0% |
| | | Black | 9 | 1 | 8 | 4 | 50.0% |
| | | Hispanic | 11 | 0 | 11 | 7 | 63.6% |
| | | Two or More Races | 3 | 0 | 3 | 1 | 33.3% |
| | | White | 45 | 8 | 37 | 25 | 67.6% |
| | 2019 | American Indian/Alas | 1 | 1 | 0 | | |
| | | Asian | 1 | 0 | 1 | 1 | 100% |
| | | Black | 9 | 0 | 9 | 4 | 44.4% |
| | | Hispanic/Latino | 20 | 6 | 14 | 7 | 50.0% |
| Two or More Races | | 3 | 0 | 3 | 0 | 0.0% | |
| White | | 49 | 8 | 41* | 27 | 65.9% | |

*one or more students retained by DSC

Retention Rates by Race/Ethnicity (2 of 3)

| Major | Fall Term | Race/Ethnicity | Registered | Exclusions | Adjusted Cohort | Retained by Program | |
|-----------------------------------|-----------|-------------------|------------|------------|-----------------|---------------------|--------|
| | | | | | | N | % |
| 2084 ACCOUNTING TECHNOLOGY | 2017 | Asian | 2 | 0 | 2 | 2 | 100.0% |
| | | Black | 6 | 0 | 6 | 4 | 66.7% |
| | | Hispanic | 11 | 2 | 9* | 4 | 44.4% |
| | | Two or More Races | 1 | 0 | 1 | 1 | 100.0% |
| | | Unknown | 3 | 2 | 1 | 0 | 0.0% |
| | | White | 44 | 9 | 35* | 19 | 54.3% |
| | 2018 | Asian | 3 | 0 | 3 | 1 | 33.3% |
| | | Black | 11 | 3 | 8 | 4 | 50.0% |
| | | Hispanic | 10 | 1 | 9 | 6 | 66.7% |
| | | Two or More Races | 4 | 1 | 3 | 0 | 0.0% |
| | | White | 44 | 11 | 34 | 21 | 63.6% |
| | 2019 | Asian | 2 | 0 | 2 | 1 | 50.0% |
| | | Black | 9 | 3 | 6 | 3 | 50.0% |
| | | Hispanic | 11 | 5 | 6 | 4 | 66.7% |
| | | Two or More Races | 2 | 0 | 2 | 1 | 50.0% |
| White | | 48 | 14 | 34* | 21 | 61.8% | |
| 2221 INDUSTRIAL MGMT TECH | 2017 | Black | 2 | 0 | 2 | 1 | 50.0% |
| | | Hispanic | 1 | 0 | 1 | 1 | 100.0% |
| | | White | 2 | 0 | 2 | 2 | 100.0% |
| | 2018 | Black | 1 | 0 | 1 | 1 | 100.0% |
| | | Hispanic | 1 | 1 | 0 | | |
| | | White | 4 | 1 | 3* | 2 | 66.7% |
| | 2019 | Black | 5 | 2 | 3 | 0 | 0.0% |
| | | Hispanic | 1 | 1 | 0 | | |
| | | White | 7 | 2 | 5 | 4 | 80.0% |
| 2228 OFFICE ADM-MED SYSTEMS | 2017 | Black | 1 | 0 | 1 | 0 | 0.0% |
| | | Hispanic | 3 | 2 | 1* | 0 | 0.0% |
| | | White | 9 | 4 | 5 | 2 | 40.0% |

*one or more students retained by DSC

Retention Rates by Race/Ethnicity (3 of 3)

| Major | Fall Term | Race/Ethnicity | Registered | Exclusions | Adjusted Cohort | Retained by Program | |
|-------------------------------|-----------|-------------------|------------|------------|-----------------|---------------------|--------|
| | | | | | | N | % |
| 2229 OFFICE ADMINISTRATION | 2017 | Black | 7 | 2 | 5* | 2 | 40.0% |
| | | Hispanic | 9 | 2 | 7 | 2 | 28.6% |
| | | Two or More Races | 1 | 0 | 1 | 1 | 100.0% |
| | | Unknown | 1 | 0 | 1 | 1 | 100.0% |
| | | White | 34 | 7 | 27* | 22 | 81.5% |
| | 2018 | Black | 10 | 4 | 6 | 1 | 16.7% |
| | | Hispanic | 2 | 0 | 2 | 0 | 0.0% |
| | | Two or More Races | 1 | 1 | 0 | | |
| | | Unknown | 3 | 1 | 2 | 2 | 100.0% |
| | | White | 35 | 6 | 29* | 16 | 55.2% |
| | 2019 | Black | 10 | 2 | 8 | 1 | 12.5% |
| | | Hispanic | 3 | 1 | 2* | 1 | 50.0% |
| | | Unknown | 3 | 2 | 1 | 0 | 0.0% |
| | | White | 30 | 9 | 21 | 13 | 61.9% |

**one or more students retained by DSC*

Retention Rates by Gender (1 of 2)

| Major | Fall Term | Gender | Registered | Exclusions | Adjusted Cohort | Retained by Program | | |
|------------------------------|---------------------------|-----------|------------|------------|-----------------|---------------------|--------|--------|
| | | | | | | N | % | |
| 2059 BUSINESS ADMINISTRATION | 2017 | Female | 115 | 9 | 104* | 45 | 42.5% | |
| | | Male | 95 | 10 | 85* | 29 | 34.1% | |
| | | Unknown | 2 | 0 | 2 | 0 | 0.0% | |
| | 2018 | Female | 144 | 21 | 123* | 60 | 48.8% | |
| | | Male | 84 | 2 | 82* | 45 | 54.9% | |
| | | PrefNoAns | 2 | 0 | 2* | 1 | 50.0% | |
| | 2019 | Female | 141 | 13 | 128* | 62 | 48.4% | |
| | | Male | 99 | 10 | 89* | 38 | 42.7% | |
| | | PrefNoAns | 7 | 3 | 4 | 2 | 50.0% | |
| | | Unknown | 4 | 0 | 4 | 1 | 25.0% | |
| | 2062 PARALEGAL-LEGAL ASST | 2017 | Female | 60 | 16 | 44* | 23 | 52.3% |
| | | | Male | 4 | 0 | 4 | 2 | 50.0% |
| 2018 | | Female | 59 | 9 | 50* | 31 | 62.0% | |
| | | Male | 9 | 0 | 9 | 6 | 66.7% | |
| | | PrefNoAns | 1 | 0 | 1 | 1 | 100.0% | |
| 2019 | | Female | 69 | 11 | 58* | 36 | 62.1% | |
| | | Male | 10 | 3 | 7 | 2 | 28.6% | |
| | | PrefNoAns | 1 | 0 | 1 | 1 | 100% | |
| | | Unknown | 3 | 1 | 2 | 0 | 0.0% | |
| 2084 ACCOUNTING TECHNOLOGY | | 2017 | Female | 55 | 11 | 44* | 24 | 54.5% |
| | Male | | 12 | 2 | 10 | 6 | 60.0% | |
| | 2018 | Female | 57 | 14 | 43 | 27 | 62.8% | |
| | | Male | 14 | 2 | 12 | 5 | 41.7% | |
| | | Unknown | 1 | 0 | 1 | 0 | 0.0% | |
| | 2019 | Female | 53 | 15 | 38 | 24 | 63.2% | |
| | | Male | 17 | 7 | 10 | 6 | 60.0% | |
| | | PrefNoAns | 1 | 0 | 1* | | | |
| | | Unknown | 1 | 0 | 1 | 0 | 0.0% | |
| | 2221 INDUSTRIAL MGMT TECH | 2017 | Female | 1 | 0 | 1 | 1 | 100.0% |
| Male | | | 4 | 0 | 4 | 3 | 75.0% | |
| 2018 | | Female | 1 | 1 | 0 | | | |
| | | Male | 5 | 1 | 4* | 3 | 75.0% | |
| 2019 | | Male | 13 | 5 | 8 | 4 | 50.0% | |

*one or more students retained by DSC

Retention Rates by Gender (2 of 2)

| Major | Fall Term | Gender | Registered | Exclusions | Adjusted Cohort | Retained by Program | |
|-----------------------------------|-----------|-----------|------------|------------|-----------------|---------------------|--------|
| | | | | | | N | % |
| 2228 OFFICE ADM-MED SYSTEMS | 2017 | Female | 11 | 6 | 5* | 2 | 40.0% |
| | | Male | 1 | 0 | 1 | 0 | 0.0% |
| | | Unknown | 1 | 0 | 1 | 0 | 0.0% |
| 2229 OFFICE ADMINISTRATION | 2017 | Female | 48 | 11 | 37* | 24 | 64.9% |
| | | Male | 3 | 0 | 3 | 3 | 100.0% |
| | | Unknown | 1 | 0 | 1 | 1 | 100.0% |
| | 2018 | Female | 44 | 9 | 35* | 17 | 48.6% |
| | | Male | 5 | 1 | 4 | 2 | 50.0% |
| | | PrefNoAns | 1 | 1 | 0 | | |
| | | Unknown | 1 | 1 | 0 | | |
| | 2019 | Female | 39 | 12 | 27* | 11 | 40.7% |
| | | Male | 7 | 2 | 5 | 4 | 80.0% |

**one or more students retained by DSC*

Placement Rates

| Program Title | Major | 2015/16 | | 2016/17 | | 2017/18 | | 2018/19 | | Average Annual Salary |
|--------------------------|-------|-----------------|------|---------|------|---------|------|---------|------|-----------------------|
| | | DSC% | FCS% | DSC% | FCS% | DSC% | FCS% | DSC% | FCS% | |
| MARKETING, SALES,SER ENT | 0817 | 100% | 93% | 100% | 94% | 78% | 85% | 80% | 94% | \$44,044 |
| BUSINESS OPER/ENTREPREN | 0913 | 100% | 100% | 100% | 100% | 100% | 100% | 100% | 100% | \$47,300 |
| OFFICE MANAGEMENT | 0914 | 100% | 98% | 100% | 97% | 100% | 93% | 100% | 98% | \$**,*** |
| BUSINESS MANAGEMENT | 0916 | 100% | 99% | 100% | 99% | 95% | 99% | 100% | 99% | \$45,396 |
| OFFICE MGMT-MEDICAL | 0919 | 100% | 99% | 100% | 97% | 100% | 93% | 100% | 85% | \$**,*** |
| OFFICE SUPPORT-TECH. CER | 0926 | 100% | 98% | 100% | 98% | 100% | 97% | 100% | 99% | \$**,*** |
| ACCOUNTING OPER-TAX PREP | 0935 | ***% | 82% | 100% | 86% | ***% | 86% | 67% | 81% | \$41,260 |
| ACCOUNTING TECH MGMT | 0943 | N/A | N/A | 100% | 83% | ***% | 78% | 69% | 71% | \$36,420 |
| BUSINESS ADMINISTRATION | 2059 | 94% | 95% | 95% | 94% | 93% | 95% | 96% | 95% | \$38,248 |
| PARALEGAL-LEGAL ASST | 2062 | 82% | 82% | 82% | 80% | 92% | 85% | 75% | 82% | \$**,*** |
| ACCOUNTING TECHNOLOGY | 2084 | ***% | 70% | 33% | 77% | 60% | 69% | N/A | 69% | \$**,*** |
| | | Revised Program | | | | 100% | 93% | 88% | 91% | \$51,028 |
| INDUSTRIAL MGMT TECH | 2221 | 100% | 98% | 100% | 70% | 100% | 94% | 0% | 93% | \$**,*** |
| OFFICE ADMINISTRATION | 2229 | 100% | 97% | 100% | 97% | 100% | 95% | | | \$**,*** |
| OFFICE ADMINISTRATION | 2229 | Revised Program | | | | 80% | 93% | 93% | 94% | \$**,*** |

Source: Florida Education Training Placement Information Program (FETPIP)

*Currently Inactive Program

N/A - No placement data for the program

(****), (\$**,***), or (***%) - Number of graduates less than 10 but greater than 0 suppressed.

Indicates the College average above the State Averages
 Indicates the College average same as the State Averages
 Indicates the College average below the State Averages

Course Success Rates (1 of 3)

| Major | Course | 2017-2018 | | 2018-2019 | | 2019-2020 | | 2020-2021 | | |
|---------------------------------|---------|-----------|--------------|-----------|--------------|-----------|--------------|-----------|--------------|---|
| | | Attempted | % Successful | Attempted | % Successful | Attempted | % Successful | Attempted | % Successful | |
| 2059 BUSINESS ADMINISTRATION | ECO2013 | 917 | 76% | 947 | 78% | 861 | 83% | 812 | 86% | ↑ |
| | ECO2023 | 708 | 80% | 565 | 83% | 541 | 87% | 453 | 90% | ↑ |
| | GEB1011 | 363 | 79% | 419 | 76% | 457 | 81% | 423 | 79% | |
| | GEB2351 | 326 | 81% | 349 | 78% | 336 | 75% | 305 | 76% | ↑ |
| | GEB2430 | 448 | 71% | 430 | 70% | 385 | 81% | 292 | 73% | |
| | ISM2000 | 410 | 77% | 396 | 71% | 442 | 69% | 381 | 66% | |
| | MAN2021 | 184 | 85% | 185 | 91% | 192 | 76% | 191 | 79% | ↑ |
| | MAR2011 | 114 | 77% | 140 | 86% | 135 | 83% | 183 | 72% | |
| | MAR2101 | 162 | 82% | 190 | 85% | 213 | 78% | 224 | 85% | ↑ |
| | MAR2321 | 103 | 81% | 87 | 80% | 95 | 73% | 113 | 78% | |
| | MAR2720 | | | | | | | 36 | 78% | |
| | MKA2021 | 22 | 82% | 21 | 86% | 17 | 65% | 24 | 83% | ↑ |
| | MNA2161 | 77 | 95% | 88 | 93% | 97 | 82% | 109 | 84% | |
| | MNA2345 | 73 | 86% | 62 | 89% | 34 | 88% | 43 | 88% | |
| | QMB1001 | 77 | 73% | 68 | 74% | 75 | 72% | 74 | 70% | |
| | RMI2001 | | | | | 25 | 72% | 40 | 70% | |
| | RMI2110 | | | | | 6 | 100% | 14 | 86% | |
| | RMI2212 | | | | | 8 | 88% | 5 | 100% | ↑ |
| | SBM2000 | 151 | 82% | 162 | 83% | 158 | 82% | 154 | 79% | |
| Major | | 4,061 | 78% | 4,041 | 79% | 4,002 | 80% | 3876 | 80% | |

■ Indicates a success rate of 90% or higher
■ Indicates a success rate between 70% and 89%
■ Indicates a success rate below 70%




Course Success Rates (2 of 3)

| Major | Course | 2017-2018 | | 2018-2019 | | 2019-2020 | | 2020-2021 | |
|----------------------------------|---------|-----------|--------------|-----------|--------------|-----------|--------------|-----------|--------------|
| | | Attempted | % Successful | Attempted | % Successful | Attempted | % Successful | Attempted | % Successful |
| 2062 PARALEGAL- LEGAL ASST | BUL2241 | 259 | 78% | 242 | 80% | 285 | 83% | 267 | 81% |
| | BUL2242 | 39 | 87% | 38 | 89% | 48 | 88% | 30 | 73% |
| | OST1141 | 148 | 83% | 100 | 84% | 87 | 84% | 100 | 81% |
| | OST1435 | 55 | 91% | 60 | 75% | 64 | 81% | 56 | 84% |
| | PLA1003 | 47 | 77% | 49 | 73% | 76 | 71% | 43 | 74% |
| | PLA1103 | 18 | 83% | 21 | 71% | 23 | 96% | 26 | 81% |
| | PLA1610 | 21 | 86% | 17 | 88% | 27 | 89% | 20 | 85% |
| | PLA1800 | 26 | 85% | 14 | 79% | 24 | 92% | 24 | 75% |
| | PLA2114 | 15 | 100% | 12 | 92% | 17 | 94% | 15 | 100% |
| | PLA2200 | 18 | 83% | 19 | 89% | 18 | 83% | 20 | 100% |
| | PLA2303 | 26 | 92% | 21 | 76% | 38 | 84% | 34 | 88% |
| | PLA2460 | 20 | 75% | 24 | 88% | 19 | 84% | 22 | 91% |
| | PLA2600 | 24 | 88% | 12 | 92% | 18 | 100% | 12 | 83% |
| | PLA2763 | 30 | 80% | 17 | 88% | 14 | 93% | 20 | 90% |
| | PLA2880 | 52 | 81% | 18 | 83% | 30 | 87% | 32 | 81% |
| PLA2949 | 1 | 100% | | | 1 | 100% | 4 | 100% | |
| | Major | 860 | 83% | 664 | 81% | 789 | 84% | 725 | 82% |
| 2084 ACCOUNTING TECHNOLOGY | ACG2021 | 668 | 66% | 618 | 68% | 609 | 67% | 714 | 73% |
| | ACG2071 | 342 | 81% | 381 | 85% | 361 | 88% | 470 | 88% |
| | APA1111 | 60 | 82% | 56 | 84% | 48 | 83% | 45 | 69% |
| | APA1121 | 26 | 73% | 45 | 87% | 36 | 86% | 31 | 84% |
| | APA1711 | 70 | 76% | 67 | 91% | 93 | 91% | 51 | 76% |
| | FIN1100 | 180 | 72% | 181 | 83% | 188 | 77% | 190 | 78% |
| | FIN2000 | 70 | 69% | 80 | 78% | 79 | 87% | 78 | 78% |
| | TAX2000 | 52 | 81% | 58 | 86% | 38 | 87% | 54 | 80% |
| | Major | 1,468 | 72% | 1,486 | 78% | 1,452 | 78% | 1633 | 78% |

■ Indicates a success rate of 90% or higher
■ Indicates a success rate between 70% and 89%
■ Indicates a success rate below 70%

Course Success Rates (3 of 3)

| Major | Course | 2017-2018 | | 2018-2019 | | 2019-2020 | | 2020-2021 | |
|------------------------------------|---------|-----------|--------------|-----------|--------------|-----------|--------------|-----------|--------------|
| | | Attempted | % Successful | Attempted | % Successful | Attempted | % Successful | Attempted | % Successful |
| 2228 OFFICE ADM- MED SYSTEMS | OST2461 | 20 | 95% | 9 | 100% | 3 | 100% | 4 | 100% |
| | Major | 20 | 95% | 9 | 100% | 3 | 100% | 4 | 100% |
| 2229 OFFICE ADMINISTRATI ON | OST1100 | 37 | 86% | 42 | 79% | 32 | 69% | 27 | 78% |
| | OST1110 | 24 | 96% | 21 | 81% | 16 | 100% | 9 | 100% |
| | OST1330 | 32 | 91% | 26 | 88% | 43 | 70% | 46 | 83% |
| | OST2336 | 23 | 96% | 22 | 73% | 30 | 87% | 10 | 90% |
| | OST2401 | 52 | 96% | 43 | 91% | 38 | 71% | 46 | 74% |
| | OST2431 | 28 | 100% | 17 | 100% | 25 | 92% | 18 | 100% |
| | OST2501 | 28 | 93% | 21 | 76% | 29 | 86% | 25 | 76% |
| | OST2713 | 16 | 94% | 21 | 100% | 18 | 89% | 15 | 87% |
| | OST2828 | 16 | 100% | 7 | 86% | 13 | 62% | | |
| | OST2852 | 16 | 94% | | | | | | |
| Major | 288 | 89% | 288 | 83% | 319 | 77% | 196 | 82% | |
| Total | | 6,801 | 78% | 6,607 | 79% | 6,716 | 80% | 6,434 | 80% |

 Indicates a success rate of 90% or higher
 Indicates a success rate between 70% and 89%
 Indicates a success rate below 70%

Source: IR Program Assessment Data

Course Success Rates by Race/Ethnicity (1 of 6)

| Program, Course & Race/Ethnicity | 2018-2019 | | 2019-2020 | | 2020-2021 | |
|---------------------------------------|-------------|------------|-------------|------------|-------------|------------|
| | Enroll | Success | Enroll | Success | Enroll | Success |
| 2059 - Business Administration | 4041 | 79% | 4002 | 80% | 3876 | 80% |
| ECO2013 | 947 | 78% | 861 | 83% | 812 | 86% |
| American Indian/Alas | 1 | 100% | 3 | 67% | | |
| Asian | 30 | 87% | 28 | 82% | 26 | 88% |
| Black | 95 | 63% | 80 | 80% | 85 | 71% |
| Hispanic/Latino | 154 | 75% | 126 | 80% | 131 | 85% |
| Native Hawaiian/Paci | 1 | 100% | 1 | 0% | 1 | 100% |
| Two or More Races | 43 | 77% | 34 | 71% | 33 | 88% |
| Unknown | 18 | 94% | 25 | 80% | 18 | 94% |
| White | 605 | 81% | 564 | 85% | 518 | 88% |
| ECO2023 | 565 | 83% | 541 | 87% | 453 | 90% |
| American Indian/Alas | | | | | 2 | 100% |
| Asian | 10 | 90% | 10 | 100% | 17 | 88% |
| Black | 76 | 71% | 58 | 78% | 55 | 76% |
| Hispanic/Latino | 82 | 82% | 85 | 87% | 68 | 94% |
| Two or More Races | 17 | 94% | 25 | 88% | 14 | 93% |
| Unknown | 10 | 80% | 14 | 100% | 9 | 89% |
| White | 369 | 85% | 349 | 88% | 288 | 91% |

| Program, Course & Race/Ethnicity | 2018-2019 | | 2019-2020 | | 2020-2021 | |
|---------------------------------------|-------------|------------|-------------|------------|-------------|------------|
| | Enroll | Success | Enroll | Success | Enroll | Success |
| 2059 - Business Administration | 4041 | 79% | 4002 | 80% | 3876 | 80% |
| GEB1011 | 419 | 76% | 457 | 81% | 423 | 79% |
| American Indian/Alas | | | | | 2 | 100% |
| Asian | 5 | 40% | 9 | 78% | 7 | 71% |
| Black | 63 | 60% | 74 | 73% | 76 | 67% |
| Hispanic/Latino | 84 | 75% | 71 | 85% | 70 | 83% |
| Two or More Races | 17 | 59% | 18 | 72% | 16 | 81% |
| Unknown | 9 | 78% | 6 | 83% | 5 | 60% |
| White | 238 | 84% | 279 | 82% | 247 | 83% |
| GEB2351 | 349 | 78% | 336 | 75% | 305 | 76% |
| American Indian/Alas | 1 | 0% | 1 | 100% | | |
| Asian | 11 | 73% | 14 | 71% | 7 | 86% |
| Black | 55 | 76% | 51 | 71% | 46 | 54% |
| Hispanic/Latino | 57 | 67% | 62 | 73% | 66 | 80% |
| Native Hawaiian | | | 2 | 50% | | |
| Two or More Races | 16 | 56% | 16 | 63% | 19 | 74% |
| Unknown | 9 | 78% | 5 | 100% | 10 | 60% |
| White | 200 | 84% | 185 | 78% | 157 | 82% |
| GEB2430 | 430 | 70% | 385 | 81% | 292 | 73% |
| American Indian/Alas | | | 1 | 100% | | |
| Asian | 8 | 75% | 6 | 83% | 5 | 80% |
| Black | 77 | 58% | 74 | 73% | 42 | 40% |
| Hispanic/Latino | 66 | 71% | 59 | 85% | 46 | 85% |
| Two or More Races | 25 | 68% | 13 | 85% | 11 | 82% |
| Unknown | 12 | 42% | 9 | 44% | 3 | 67% |
| White | 241 | 74% | 223 | 84% | 185 | 77% |

Course Success Rates by Race/Ethnicity (2 of 6)

| Program, Course & Race/Ethnicity | 2018-2019 | | 2019-2020 | | 2020-2021 | |
|---------------------------------------|-------------|------------|-------------|------------|-------------|------------|
| | Enroll | Success | Enroll | Success | Enroll | Success |
| 2059 - Business Administration | 4041 | 79% | 4002 | 80% | 3876 | 80% |
| ISM2000 | 396 | 71% | 442 | 69% | 381 | 66% |
| Asian | 6 | 50% | 7 | 86% | 7 | 86% |
| Black | 64 | 59% | 80 | 59% | 55 | 40% |
| Hispanic/Latino | 57 | 63% | 75 | 67% | 79 | 67% |
| Two or More Races | 14 | 64% | 14 | 71% | 13 | 62% |
| Unknown | 10 | 80% | 7 | 57% | 6 | 33% |
| White | 241 | 78% | 259 | 73% | 221 | 73% |
| MAN2021 | 185 | 91% | 192 | 76% | 191 | 79% |
| American Indian/Alas | | | | | 1 | 100% |
| Asian | 3 | 100% | 7 | 71% | 8 | 75% |
| Black | 20 | 75% | 26 | 65% | 36 | 64% |
| Hispanic/Latino | 25 | 88% | 25 | 68% | 32 | 81% |
| Native Hawaiian/Paci | 1 | 100% | 1 | 100% | | |
| Two or More Races | 3 | 67% | 9 | 89% | 5 | 100% |
| Unknown | 4 | 100% | 4 | 50% | 3 | 33% |
| White | 129 | 95% | 120 | 80% | 106 | 84% |
| MAR2011 | 140 | 86% | 135 | 83% | 183 | 72% |
| Asian | 3 | 100% | 3 | 100% | 3 | 67% |
| Black | 20 | 85% | 24 | 83% | 37 | 59% |
| Hispanic/Latino | 15 | 80% | 28 | 86% | 27 | 67% |
| Native Hawaiian/Paci | | | 1 | 100% | | |
| Two or More Races | 4 | 100% | 6 | 83% | 8 | 75% |
| Unknown | 2 | 100% | 3 | 67% | 3 | 33% |
| White | 96 | 85% | 70 | 81% | 105 | 79% |
| MAR2101 | 190 | 85% | 213 | 78% | 224 | 85% |
| American Indian/Alas | | | | | 1 | 100% |
| Asian | 2 | 100% | 1 | 100% | 8 | 88% |
| Black | 29 | 66% | 38 | 79% | 48 | 79% |
| Hispanic/Latino | 22 | 86% | 32 | 78% | 34 | 85% |
| Native Hawaiian/Paci | | | | | 1 | 100% |
| Two or More Races | 10 | 90% | 3 | 100% | 8 | 88% |
| Unknown | 3 | 100% | 3 | 33% | 2 | 100% |
| White | 123 | 89% | 136 | 79% | 122 | 87% |

| Program, Course & Race/Ethnicity | 2018-2019 | | 2019-2020 | | 2020-2021 | |
|---------------------------------------|-------------|------------|-------------|------------|-------------|------------|
| | Enroll | Success | Enroll | Success | Enroll | Success |
| 2059 - Business Administration | 4041 | 79% | 4002 | 80% | 3876 | 80% |
| MAR2321 | 87 | 80% | 95 | 73% | 113 | 78% |
| Asian | 2 | 50% | 3 | 100% | 2 | 100% |
| Black | 6 | 83% | 15 | 73% | 23 | 52% |
| Hispanic/Latino | 15 | 67% | 16 | 56% | 23 | 96% |
| Two or More Races | 3 | 67% | 3 | 67% | 7 | 86% |
| Unknown | 2 | 50% | 2 | 50% | 58 | 79% |
| White | 59 | 86% | 56 | 77% | 36 | 78% |
| MAR2720 | | | | | 36 | 78% |
| American Indian/Alas | | | | | 1 | 100% |
| Black | | | | | 5 | 80% |
| Hispanic/Latino | | | | | 13 | 92% |
| Two or More Races | | | | | 1 | 100% |
| White | | | | | 16 | 63% |
| MKA2021 | 21 | 86% | 17 | 65% | 24 | 83% |
| Black | 4 | 25% | 3 | 33% | 2 | 50% |
| Hispanic/Latino | 3 | 100% | 3 | 67% | 10 | 90% |
| Unknown | 1 | 100% | 2 | 50% | | |
| White | 12 | 100% | 9 | 78% | 12 | 83% |
| MNA2161 | 88 | 93% | 97 | 82% | 109 | 83% |
| American Indian/Alas | | | | | 1 | 100% |
| Asian | | | | | 5 | 40% |
| Black | 14 | 86% | 24 | 67% | 16 | 81% |
| Hispanic/Latino | 9 | 100% | 15 | 87% | 14 | 100% |
| Two or More Races | 2 | 100% | 3 | 100% | 4 | 100% |
| Unknown | 1 | 100% | 6 | 67% | | |
| White | 62 | 94% | 49 | 90% | 69 | 83% |
| MNA2345 | 62 | 89% | 34 | 88% | 43 | 88% |
| Asian | | | | | 1 | 100% |
| Black | 11 | 82% | 6 | 100% | 4 | 75% |
| Hispanic/Latino | 4 | 75% | 1 | 100% | 7 | 86% |
| Two or More Races | 1 | 100% | 1 | 0% | 1 | 100% |
| Unknown | | | | | 1 | 100% |
| White | 43 | 91% | 26 | 88% | 29 | 90% |
| QMB1001 | 288 | 83% | 319 | 77% | 74 | 70% |
| Asian | 68 | 74% | 75 | 72% | 2 | 100% |
| Black | | | 4 | 75% | 13 | 38% |
| Hispanic/Latino | 12 | 58% | 10 | 40% | 11 | 73% |
| Two or More Races | 9 | 89% | 12 | 67% | 1 | 100% |
| Unknown | 2 | 50% | 2 | 50% | 1 | 100% |
| White | 45 | 76% | 47 | 81% | 46 | 76% |

Course Success Rates by Race/Ethnicity (3 of 6)

| Program, Course & Race/Ethnicity | 2018-2019 | | 2019-2020 | | 2020-2021 | |
|---------------------------------------|-------------|------------|-------------|------------|-------------|------------|
| | Enroll | Success | Enroll | Success | Enroll | Success |
| 2059 - Business Administration | 4041 | 79% | 4002 | 80% | 3876 | 80% |
| RMI2001 | | | 25 | 72% | 40 | 70% |
| Black | | | 7 | 71% | 8 | 50% |
| Hispanic/Latino | | | 2 | 100% | 6 | 100% |
| Two or More Races | | | 2 | 100% | 1 | 0% |
| White | | | 14 | 64% | 25 | 72% |
| RMI2110 | | | 6 | 100% | 14 | 86% |
| Black | | | 3 | 100% | 3 | 100% |
| Hispanic/Latino | | | | | 3 | 67% |
| Two or More Races | | | 1 | 100% | | |
| White | | | 2 | 100% | 8 | 88% |
| RMI2212 | | | 8 | 88% | 5 | 100% |
| Black | | | 5 | 80% | | |
| Two or More Races | | | | | 1 | 100% |
| White | | | 3 | 100% | 4 | 100% |
| SBM2000 | 162 | 83% | 158 | 82% | 154 | 79% |
| Asian | 1 | 100% | 2 | 100% | 2 | 50% |
| Black | 30 | 60% | 27 | 85% | 30 | 70% |
| Hispanic/Latino | 22 | 91% | 28 | 93% | 24 | 88% |
| Two or More Races | 8 | 75% | 5 | 100% | 7 | 71% |
| Unknown | 4 | 75% | 2 | 0% | 4 | 25% |
| White | 95 | 91% | 94 | 79% | 87 | 83% |
| 2062 - Paralegal-Legal Asst | 664 | 81% | 789 | 84% | 725 | 82% |
| BUL2241 | 242 | 80% | 285 | 83% | 267 | 81% |
| American Indian | | | 1 | 100% | | |
| Asian | 5 | 80% | 7 | 57% | 6 | 50% |
| Black | 32 | 66% | 53 | 70% | 41 | 66% |
| Hispanic/Latino | 36 | 81% | 44 | 75% | 45 | 82% |
| Native Hawaiian/Paci | 2 | 50% | 2 | 100% | | |
| Two or More Races | 10 | 70% | 10 | 90% | 4 | 100% |
| Unknown | 2 | 50% | 3 | 67% | 8 | 63% |
| White | 155 | 85% | 165 | 90% | 163 | 85% |
| BUL2242 | 38 | 89% | 48 | 88% | 30 | 73% |
| Asian | 2 | 100% | 1 | 100% | | |
| Black | 3 | 100% | 10 | 90% | 4 | 50% |
| Hispanic/Latino | 4 | 100% | 3 | 100% | 7 | 71% |
| Two or More Races | 2 | 100% | 4 | 75% | 1 | 0% |
| Unknown | | | | | 1 | 0% |
| White | 26 | 85% | 30 | 87% | 17 | 88% |

| Program, Course & Race/Ethnicity | 2018-2019 | | 2019-2020 | | 2020-2021 | |
|------------------------------------|------------|------------|------------|------------|------------|------------|
| | Enroll | Success | Enroll | Success | Enroll | Success |
| 2062 - Paralegal-Legal Asst | 664 | 81% | 789 | 84% | 725 | 82% |
| OST1141 | 100 | 84% | 87 | 84% | 100 | 81% |
| Asian | 3 | 100% | 3 | 67% | 3 | 67% |
| Black | 13 | 77% | 12 | 58% | 13 | 77% |
| Hispanic/Latino | 19 | 74% | 20 | 85% | 17 | 82% |
| Two or More Races | 6 | 100% | 5 | 100% | 4 | 100% |
| Unknown | | | 1 | 100% | 4 | 75% |
| White | 59 | 86% | 46 | 89% | 59 | 81% |
| OST1435 | 60 | 75% | 64 | 81% | 56 | 84% |
| Asian | | | 1 | 100% | | |
| Black | 10 | 50% | 9 | 67% | 7 | 100% |
| Hispanic/Latino | 10 | 50% | 8 | 88% | 8 | 63% |
| Native Hawaiian/Paci | | | 1 | 100% | | |
| Two or More Races | 2 | 100% | 1 | 0% | 3 | 33% |
| Unknown | 1 | 100% | 2 | 100% | 1 | 100% |
| White | 37 | 86% | 42 | 83% | 37 | 89% |
| PLA1003 | 49 | 73% | 76 | 71% | 43 | 74% |
| Asian | | | 1 | 100% | | |
| Black | 6 | 67% | 10 | 60% | 8 | 88% |
| Hispanic/Latino | 10 | 50% | 13 | 69% | 5 | 60% |
| Native Hawaiian/Paci | | | | | 1 | 100% |
| Two or More Races | 2 | 100% | 1 | 0% | 3 | 67% |
| Unknown | | | | | 1 | 100% |
| White | 29 | 79% | 51 | 75% | 25 | 72% |
| PLA1103 | 21 | 71% | 23 | 96% | 26 | 81% |
| Asian | | | | | 1 | 100% |
| Black | 1 | 100% | 1 | 100% | 2 | 50% |
| Hispanic/Latino | 8 | 75% | 1 | 0% | 6 | 83% |
| Two or More Races | | | | | 1 | 0% |
| White | 10 | 60% | 21 | 100% | 16 | 88% |
| PLA1610 | 17 | 88% | 27 | 89% | 20 | 85% |
| Asian | | | | | 2 | 50% |
| Black | 2 | 100% | 2 | 100% | | |
| Hispanic/Latino | 2 | 100% | 7 | 100% | 3 | 100% |
| Two or More Races | | | 1 | 100% | | |
| White | 12 | 83% | 17 | 82% | 15 | 87% |
| PLA1800 | 14 | 79% | 24 | 92% | 24 | 75% |
| Asian | | | | | 1 | 100% |
| Black | 1 | 100% | 2 | 100% | 2 | 50% |
| Hispanic/Latino | 6 | 83% | 1 | 100% | 4 | 50% |
| Two or More Races | | | 1 | 100% | 1 | 0% |
| White | 6 | 67% | 20 | 90% | 16 | 88% |

Course Success Rates by Race/Ethnicity (4 of 6)

| Program, Course & Race/Ethnicity | 2018-2019 | | 2019-2020 | | 2020-2021 | |
|------------------------------------|-----------|---------|-----------|---------|-----------|---------|
| | Enroll | Success | Enroll | Success | Enroll | Success |
| 2062 - Paralegal-Legal Asst | 664 | 81% | 789 | 84% | 725 | 82% |
| PLA2114 | 12 | 92% | 17 | 94% | 15 | 100% |
| American Indian | | | 1 | 100% | | |
| Black | 1 | 100% | 1 | 0% | 1 | 100% |
| Hispanic/Latino | 2 | 100% | 5 | 100% | | |
| Two or More Races | | | 1 | 100% | | |
| White | 9 | 89% | 9 | 100% | 14 | 100% |
| PLA2200 | 19 | 89% | 18 | 83% | 20 | 100% |
| Asian | | | | | 1 | 100% |
| Black | 1 | 100% | 1 | 0% | 2 | 100% |
| Hispanic/Latino | 3 | 100% | 3 | 100% | 3 | 100% |
| Two or More Races | | | 1 | 100% | | |
| White | 14 | 86% | 13 | 85% | 14 | 100% |
| PLA2303 | 21 | 76% | 38 | 84% | 34 | 88% |
| Asian | | | 1 | 100% | | |
| Black | 2 | 100% | 5 | 80% | 2 | 100% |
| Hispanic/Latino | 2 | 100% | 8 | 75% | 9 | 78% |
| Two or More Races | 2 | 50% | 2 | 100% | | |
| White | 15 | 73% | 22 | 86% | 23 | 91% |
| PLA2460 | 24 | 88% | 19 | 84% | 22 | 91% |
| Asian | | | 1 | 100% | | |
| Black | 3 | 67% | 2 | 100% | 1 | 0% |
| Hispanic/Latino | 3 | 100% | 2 | 100% | 6 | 83% |
| Two or More Races | 1 | 100% | 1 | 100% | | |
| White | 16 | 88% | 13 | 77% | 15 | 100% |
| PLA2600 | 12 | 92% | 18 | 100% | 12 | 83% |
| Asian | | | | | 1 | 100% |
| Black | 2 | 100% | 2 | 100% | | |
| Hispanic/Latino | 3 | 100% | 3 | 100% | 3 | 33% |
| Two or More Races | 1 | 100% | 1 | 100% | | |
| White | 5 | 80% | 12 | 100% | 8 | 100% |
| PLA2763 | 17 | 88% | 14 | 93% | 20 | 90% |
| Asian | | | | | 1 | 100% |
| Black | | | | | 1 | 100% |
| Hispanic/Latino | 2 | 100% | 7 | 100% | | |
| White | 13 | 85% | 7 | 86% | 18 | 89% |

| Program, Course & Race/Ethnicity | 2018-2019 | | 2019-2020 | | 2020-2021 | |
|------------------------------------|-----------|---------|-----------|---------|-----------|---------|
| | Enroll | Success | Enroll | Success | Enroll | Success |
| 2062 - Paralegal-Legal Asst | 664 | 81% | 789 | 84% | 725 | 82% |
| PLA2880 | 18 | 83% | 30 | 87% | 32 | 81% |
| Asian | | | | | 2 | 100% |
| Black | 2 | 100% | 3 | 100% | 1 | 100% |
| Hispanic/Latino | 5 | 80% | 6 | 67% | 6 | 67% |
| Native Hawaiian/Paci | | | | | 1 | 100% |
| Two or More Races | 2 | 50% | 1 | 0% | | |
| White | 9 | 89% | 20 | 95% | 22 | 82% |
| PLA2949 | | | 1 | 100% | 4 | 100% |
| Black | | | | | 1 | 100% |
| White | | | 1 | 100% | 3 | 100% |
| 2084 - Accounting Tech | 1486 | 78% | 1452 | 78% | 1633 | 78% |
| ACG2021 | 618 | 68% | 609 | 67% | 714 | 73% |
| American Indian/Alas | 2 | 50% | 1 | 100% | | |
| Asian | 20 | 90% | 15 | 87% | 18 | 89% |
| Black | 57 | 44% | 57 | 47% | 62 | 42% |
| Hispanic/Latino | 79 | 61% | 120 | 67% | 130 | 72% |
| Native Hawaiian/Paci | 2 | 0% | 2 | 50% | | |
| Two or More Races | 23 | 39% | 27 | 74% | 14 | 79% |
| Unknown | 15 | 67% | 18 | 56% | 14 | 93% |
| White | 420 | 73% | 369 | 70% | 476 | 76% |
| ACG2071 | 381 | 85% | 361 | 88% | 470 | 88% |
| American Indian/Alas | 1 | 100% | 1 | 100% | | |
| Asian | 21 | 90% | 6 | 100% | 20 | 90% |
| Black | 26 | 73% | 25 | 68% | 27 | 56% |
| Hispanic/Latino | 43 | 84% | 75 | 87% | 102 | 82% |
| Native Hawaiian/Paci | | | 1 | 100% | | |
| Two or More Races | 9 | 78% | 10 | 100% | 14 | 79% |
| Unknown | 9 | 78% | 10 | 100% | 20 | 95% |
| White | 272 | 86% | 233 | 89% | 287 | 92% |
| APA1111 | 56 | 84% | 48 | 83% | 45 | 69% |
| Asian | 1 | 100% | 1 | 100% | 2 | 100% |
| Black | 6 | 83% | 4 | 75% | 9 | 33% |
| Hispanic/Latino | 9 | 89% | 10 | 60% | 6 | 67% |
| Two or More Races | 2 | 50% | 1 | 100% | | |
| White | 38 | 84% | 32 | 91% | 28 | 79% |

Course Success Rates by Race/Ethnicity (5 of 6)

| Program, Course & Race/Ethnicity | 2018-2019 | | 2019-2020 | | 2020-2021 | |
|----------------------------------|-----------|---------|-----------|---------|-----------|---------|
| | Enroll | Success | Enroll | Success | Enroll | Success |
| 2084 - Accounting Tech | 1486 | 78% | 1452 | 78% | 1633 | 78% |
| APA1121 | 45 | 87% | 36 | 86% | 31 | 84% |
| Asian | | | | | 1 | 100% |
| Black | 5 | 80% | 7 | 57% | 3 | 67% |
| Hispanic/Latino | 6 | 67% | 8 | 88% | 3 | 100% |
| Two or More Races | 3 | 67% | 2 | 50% | | |
| White | 29 | 97% | 19 | 100% | 24 | 83% |
| APA1711 | 67 | 91% | 93 | 91% | 51 | 76% |
| Asian | 2 | 50% | 3 | 67% | | |
| Black | 8 | 100% | 10 | 80% | 8 | 63% |
| Hispanic/Latino | 4 | 75% | 18 | 94% | 8 | 88% |
| Two or More Races | 2 | 100% | 2 | 100% | 3 | 100% |
| Unknown | 1 | 100% | 2 | 100% | 1 | 100% |
| White | 50 | 92% | 58 | 93% | 31 | 74% |
| FIN1100 | 181 | 83% | 188 | 77% | 190 | 78% |
| American Indian/Alas | | | 1 | 100% | | |
| Asian | 2 | 50% | 4 | 75% | 3 | 100% |
| Black | 25 | 60% | 28 | 71% | 24 | 63% |
| Hispanic/Latino | 28 | 71% | 33 | 73% | 33 | 79% |
| Two or More Races | 5 | 100% | 4 | 75% | 11 | 82% |
| Unknown | 1 | 100% | 1 | 100% | 4 | 75% |
| White | 119 | 90% | 117 | 79% | 115 | 80% |
| FIN2000 | 80 | 78% | 79 | 87% | 78 | 78% |
| Asian | 3 | 100% | 2 | 100% | 4 | 100% |
| Black | 18 | 72% | 15 | 73% | 11 | 64% |
| Hispanic/Latino | 11 | 73% | 9 | 78% | 17 | 82% |
| Two or More Races | 4 | 50% | 1 | 100% | 3 | 100% |
| Unknown | 1 | 100% | 1 | 100% | 2 | 50% |
| White | 43 | 81% | 51 | 92% | 41 | 78% |

| Program, Course & Race/Ethnicity | 2018-2019 | | 2019-2020 | | 2020-2021 | |
|--------------------------------------|-----------|---------|-----------|---------|-----------|---------|
| | Enroll | Success | Enroll | Success | Enroll | Success |
| 2084 - Accounting Tech | 1486 | 78% | 1452 | 78% | 1633 | 78% |
| TAX2000 | 58 | 86% | 38 | 87% | 54 | 80% |
| Asian | 1 | 100% | 2 | 100% | 2 | 100% |
| Black | 14 | 86% | 6 | 100% | 11 | 45% |
| Hispanic/Latino | 4 | 100% | 7 | 57% | 8 | 88% |
| Two or More Races | | | 1 | 100% | 1 | 100% |
| White | 39 | 85% | 22 | 91% | 32 | 88% |
| 2228 - Office Adm-Med Systems | 9 | 100% | 3 | 100% | 4 | 100% |
| OST2461 | 9 | 100% | 3 | 100% | 4 | 100% |
| Black | 1 | 100% | 1 | 100% | | |
| Two or More Races | | | | | 1 | 100% |
| Unknown | | | 1 | 100% | | |
| White | 7 | 100% | 1 | 100% | 3 | 100% |
| 2229 - Office Admin | 288 | 83% | 319 | 77% | 196 | 82% |
| OST1100 | 42 | 79% | 32 | 69% | 27 | 78% |
| Black | 9 | 78% | 3 | 33% | 2 | 100% |
| Hispanic/Latino | 3 | 67% | 5 | 60% | 4 | 75% |
| Two or More Races | 1 | 100% | 1 | 100% | 2 | 100% |
| Unknown | 3 | 33% | 1 | 100% | | |
| White | 26 | 85% | 22 | 73% | 19 | 74% |
| OST1110 | 21 | 81% | 16 | 100% | 9 | 100% |
| Black | 4 | 75% | 2 | 100% | 1 | 100% |
| Hispanic/Latino | 3 | 33% | 1 | 100% | 1 | 100% |
| Two or More Races | 2 | 100% | 1 | 100% | 1 | 100% |
| White | 12 | 92% | 12 | 100% | 6 | 100% |
| OST1330 | 26 | 88% | 43 | 70% | 46 | 83% |
| Asian | | | | | 1 | 100% |
| Black | 5 | 100% | 6 | 50% | 9 | 78% |
| Hispanic/Latino | 1 | 100% | 10 | 80% | 5 | 60% |
| Two or More Races | 2 | 100% | 1 | 100% | 1 | 0% |
| Unknown | 2 | 50% | 1 | 100% | | |
| White | 16 | 88% | 25 | 68% | 30 | 90% |

Indicates a success rate of 90% or higher
 Indicates a success rate between 70% and 89%
 Indicates a success rate below 70%

Course Success Rates by Race/Ethnicity (6 of 6)

| Program, Course & Race/Ethnicity | 2018-2019 | | 2019-2020 | | 2020-2021 | |
|----------------------------------|-----------|---------|-----------|---------|-----------|---------|
| | Enroll | Success | Enroll | Success | Enroll | Success |
| 2229 - Office Admin | 288 | 83% | 319 | 77% | 196 | 82% |
| OST2336 | 22 | 73% | 30 | 87% | 10 | 90% |
| Asian | | | 1 | 100% | | |
| Black | 6 | 33% | 5 | 60% | 1 | 100% |
| Hispanic | | | 5 | 80% | | |
| Two or More Races | 1 | 100% | 1 | 100% | | |
| White | 15 | 87% | 18 | 94% | 9 | 89% |
| OST2401 | 43 | 91% | 38 | 71% | 46 | 74% |
| Black | 9 | 78% | 6 | 50% | 5 | 60% |
| Hispanic/Latino | 4 | 100% | 7 | 86% | 12 | 83% |
| Two or More Races | | | 1 | 100% | | |
| Unknown | 2 | 50% | 1 | 100% | 1 | 0% |
| White | 28 | 96% | 23 | 70% | 28 | 75% |
| OST2431 | 17 | 100% | 25 | 92% | 18 | 100% |
| Asian | | | | | 1 | 100% |
| Black | 2 | 100% | 1 | 100% | 1 | 100% |
| Hispanic/Latino | 3 | 100% | 5 | 80% | 3 | 100% |
| Native Hawaiian | | | 1 | 100% | | |
| Two or More Races | | | 1 | 100% | | |
| Two or More Races | 1 | 100% | 1 | 100% | | |
| White | 11 | 100% | 16 | 94% | 13 | 100% |
| OST2501 | 21 | 76% | 29 | 86% | 25 | 76% |
| Black | 7 | 43% | 3 | 67% | 2 | 100% |
| Hispanic/Latino | | | 3 | 67% | 6 | 67% |
| Two or More Races | 1 | 100% | 1 | 100% | 2 | 100% |
| Unknown | 1 | 100% | 1 | 100% | 1 | 0% |
| White | 12 | 92% | 21 | 90% | 14 | 79% |
| OST2713 | 21 | 100% | 18 | 89% | 15 | 87% |
| Black | 3 | 100% | 4 | 75% | 1 | 0% |
| Hispanic/Latino | 1 | 100% | 2 | 50% | | |
| Two or More Races | | | | | 1 | 100% |
| Unknown | 1 | 100% | 1 | 100% | | |
| White | 14 | 100% | 11 | 100% | 13 | 92% |
| OST2828 | 7 | 86% | 13 | 62% | | |
| Black | 2 | 50% | 2 | 100% | | |
| Hispanic/Latino | | | 2 | 0% | | |
| White | 5 | 100% | 9 | 67% | | |

■ Indicates a success rate of 90% or higher
■ Indicates a success rate between 70% and 89%
■ Indicates a success rate below 70%

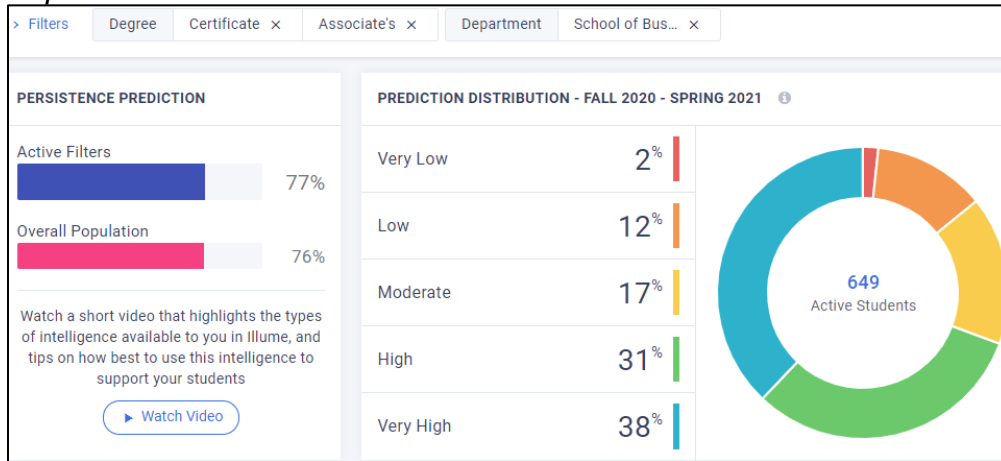
Overall Success Rates by Program and Race/Ethnicity

| Program, Course & Race/Ethnicity | 2019-2020 | | 2020-2021 | |
|-----------------------------------------|-----------|---------|-----------|---------|
| | Enroll | Success | Enroll | Success |
| 2059 - Business Administration | 4002 | 80% | 3876 | 80% |
| American Indian/Alas | 5 | 80% | 8 | 100% |
| Asian | 90 | 83% | 100 | 82% |
| Black | 595 | 73% | 584 | 63% |
| Hispanic/Latino | 628 | 79% | 664 | 83% |
| Native Hawaiian/Paci | 5 | 60% | 2 | 100% |
| Two or More Races | 153 | 78% | 150 | 82% |
| Unknown | 88 | 72% | 65 | 69% |
| White | 2438 | 82% | 2303 | 83% |
| 2062 - Paralegal-Legal Assistant | 789 | 84% | 725 | 82% |
| American Indian/Alas | 2 | 100% | | |
| Asian | 15 | 73% | 18 | 72% |
| Black | 113 | 72% | 86 | 73% |
| Hispanic/Latino | 131 | 82% | 122 | 77% |
| Native Hawaiian/Paci | 3 | 100% | 2 | 100% |
| Two or More Races | 30 | 83% | 17 | 65% |
| Unknown | 6 | 83% | 15 | 67% |
| White | 489 | 88% | 465 | 87% |

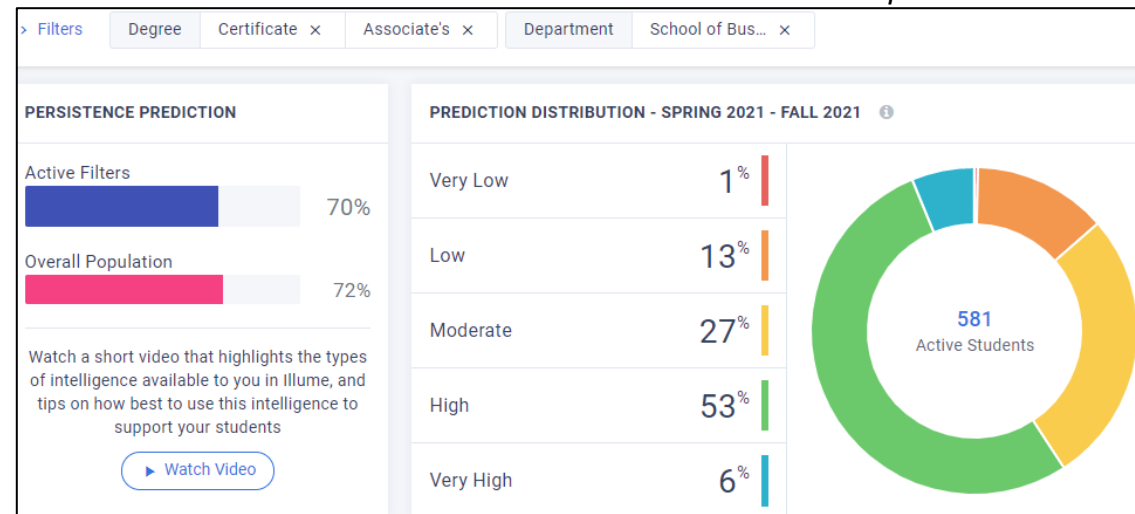
| Program, Course & Race/Ethnicity | 2019-2020 | | 2020-2021 | |
|-------------------------------------------------|-------------|------------|-------------|------------|
| | Enroll | Success | Enroll | Success |
| 2084 - Accounting Technology | 1452 | 78% | 1633 | 78% |
| American Indian/Alas | 3 | 100% | | |
| Asian | 33 | 88% | 50 | 92% |
| Black | 152 | 63% | 155 | 50% |
| Hispanic/Latino | 280 | 75% | 307 | 78% |
| Native Hawaiian/Paci | 3 | 67% | | |
| Two or More Races | 48 | 81% | 46 | 83% |
| Unknown | 32 | 75% | 41 | 90% |
| White | 901 | 81% | 1034 | 81% |
| 2228 - Office Administration-Med Systems | 3 | 100% | 4 | 100% |
| Black | 1 | 100% | | |
| Two or More Races | | | 1 | 100% |
| Unknown | 1 | 100% | | |
| White | 1 | 100% | 3 | 100% |
| 2229 - Office Administration | 319 | 77% | 196 | 82% |
| Asian | 5 | 80% | 2 | 100% |
| Black | 42 | 57% | 22 | 77% |
| Hispanic/Latino | 52 | 71% | 31 | 77% |
| Native Hawaiian/Paci | 1 | 100% | | |
| Two or More Races | 8 | 88% | 7 | 86% |
| Unknown | 7 | 100% | 2 | 0% |
| White | 204 | 82% | 132 | 85% |
| Grand Total | 6716 | 80% | 6434 | 80% |

■ Indicates a success rate of 90% or higher
■ Indicates a success rate between 70% and 89%
■ Indicates a success rate below 70%

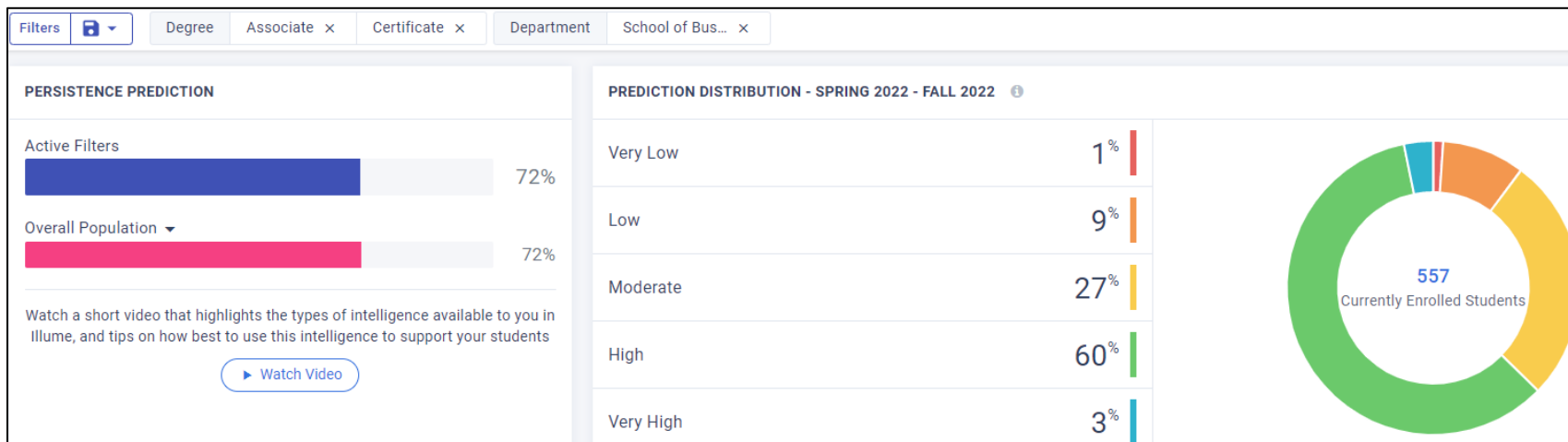
Captured on 11/11/20



Captured on 2/8/21



Captured on 2/16/22



Civitas – illumine Courses

Explore courses where:

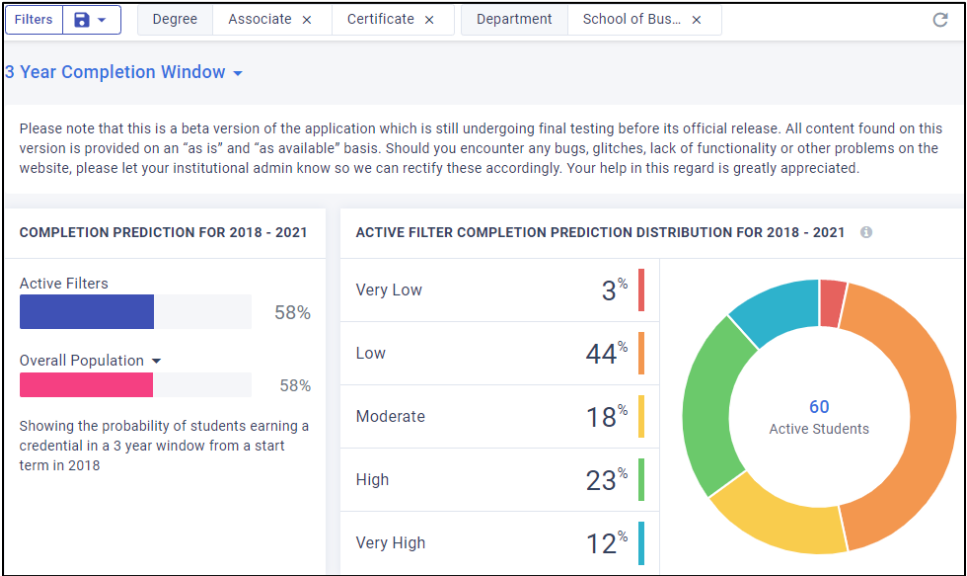
A student's course grade strongly signals graduation likelihood ▾

These are courses where a single letter-grade difference creates the biggest boost in graduation likelihood for an individual student. Advising students to prioritize these courses could increase their graduation likelihood.



Civitas – Completion Insights

Captured on 2/8/21



Captured on 2/16/22

