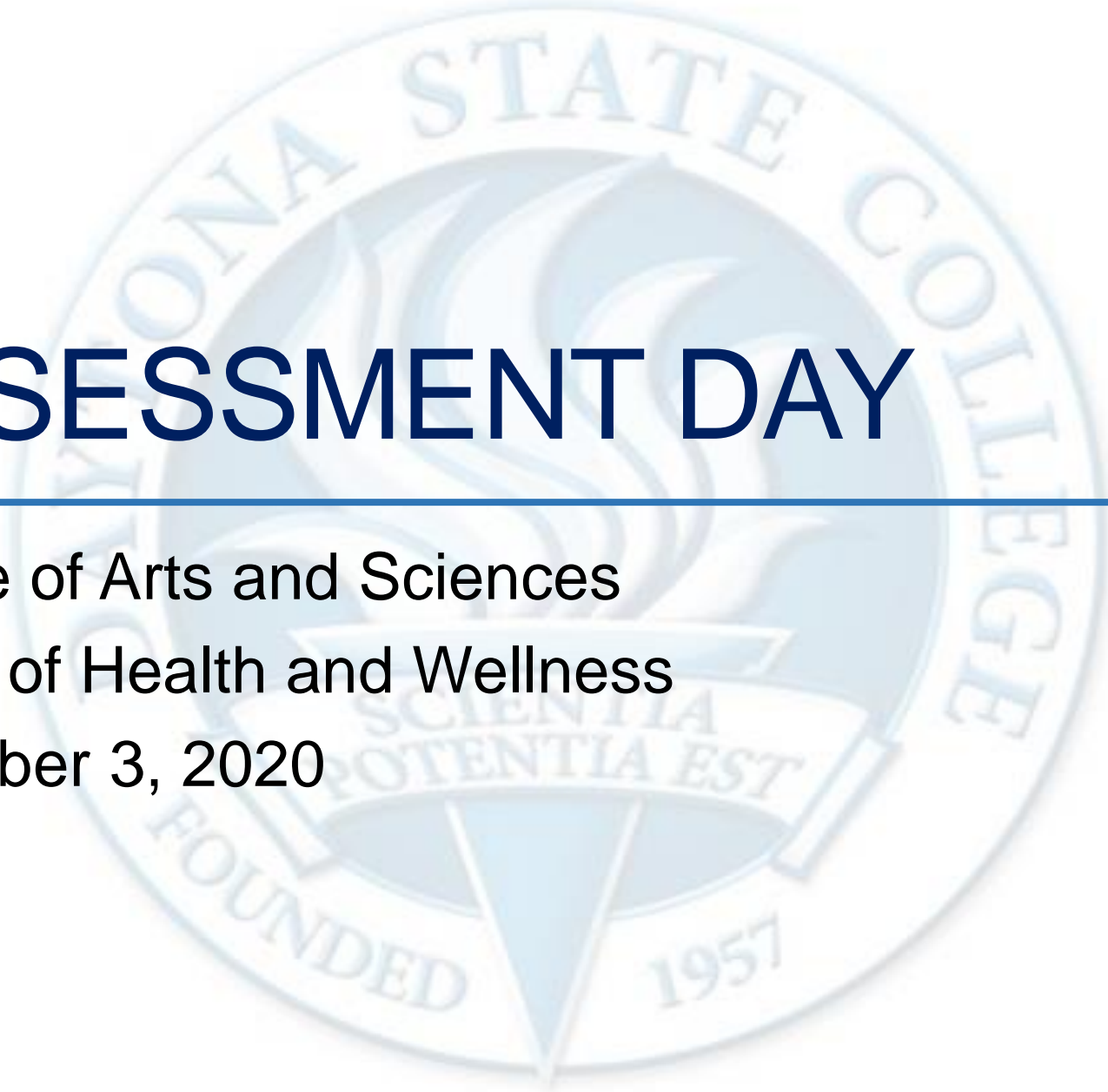


ASSESSMENT DAY

College of Arts and Sciences
School of Health and Wellness
December 3, 2020



Strengths

Challenges

Recommendations

Academic Assessment

	LEVEL	FOCUS	CONDUCTED BY	FREQUENCY
Academic Success Committee	Program	<ul style="list-style-type: none"> Quality of assessment practices 	Committee of peers	Years 1 & 2
Instructional Program Review	Program / Cluster	<ul style="list-style-type: none"> Enrollment, retention, completion Industry certifications and job placement Program budget and staffing Advisory committees Curriculum changes 	Committee of peers	Year 3
Assessment Day	Course/ Program	<ul style="list-style-type: none"> Enrollment by demographics Graduation and retention Average class size Course success rate Placement rate SLOs, PLOs and ILOs 	Program Chair and Faculty	Years 1, 2, 3

Last Assessment Day – Action Items

Health and Wellness Last Assessment Day: 10/07/2019:

- Instructional Resources to help deep link with publisher content for late assignments;
- Look into creating awareness with marketing videos to promote their courses. Poster or any other marketing material to promote PET2084;
- Delve deeper into Deltona and DeLand campus populations with CIVITAS;
- Confirm that dual enrolled students are also part of the new student orientation initiative (Michelle)

Course Learning Outcome – HUN1201

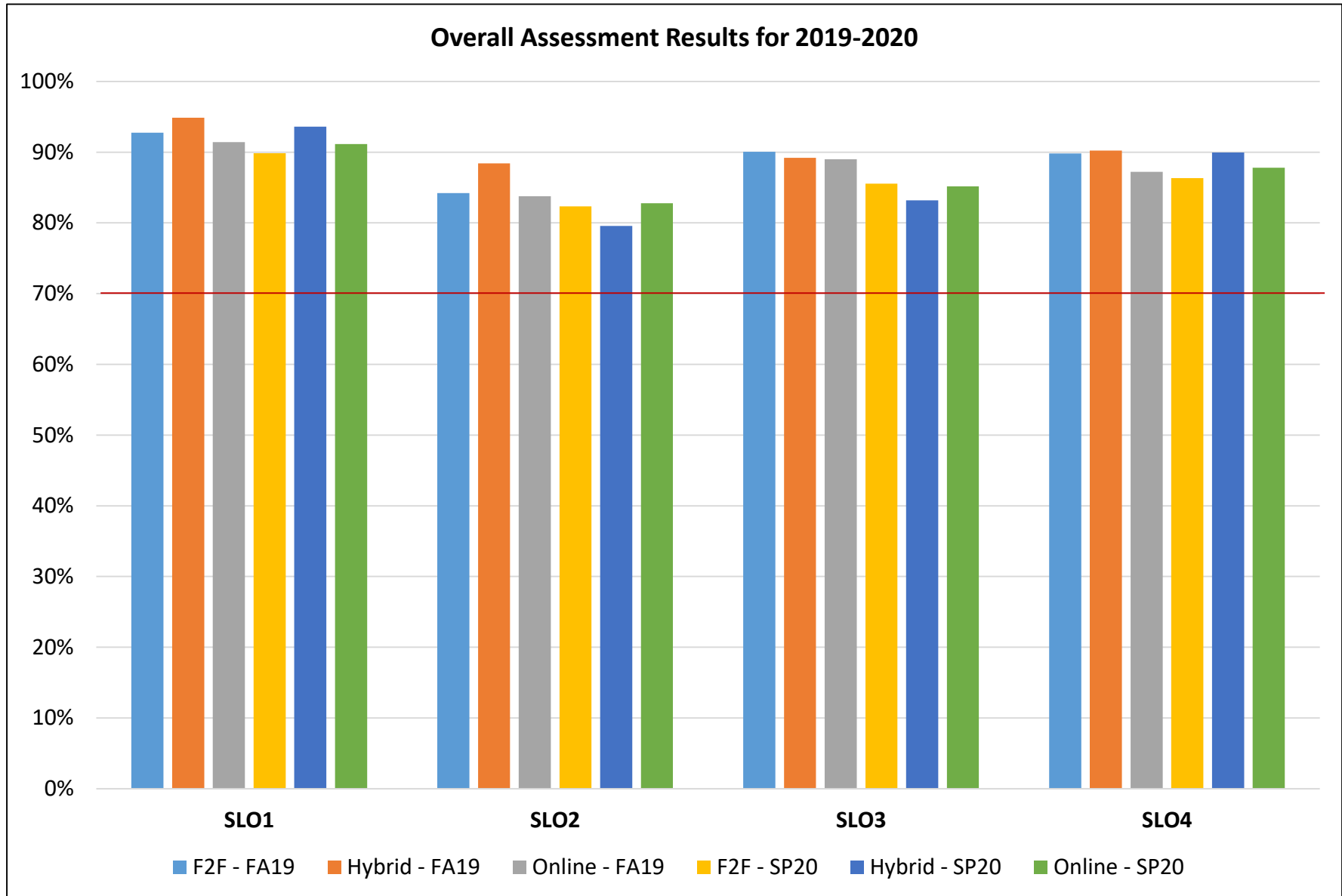
SLO1: Describe how food and nutrients affect the health of the human body throughout the lifecycle, and in relationship to fitness, weight control, and the prevention of diet related chronic disease. (1)

SLO 2: Integrate nutritional thinking into daily life by analyzing and evaluating how personal food and lifestyle choices impact overall health, wellbeing, and the world in which we live. (1)

SLO 3: Apply evidence based information to answer questions that explore assumptions, concepts, and recommendations within the field of nutrition. (1, 4)

SLO 4: Discuss cultural influences and perspectives on food, nutrition and health. (3)

Course Learning Outcome Assessment – HUN1201



Course Learning Outcome Assessment – HUN1201

Fall 19

FACE TO FACE		ALL SECTIONS COMBINED					
FULL							
SLO1	91.99%	SLO1	92.76%				
SLO2	80.44%	SLO2	84.21%				
SLO3	91.98%	SLO3	90.07%				
SLO4	91.98%	SLO4	89.81%				
HYBRID		HYBRID		HYBRID		HYBRID	
A		B		FULL		ALL	
SLO1	93.02%	SLO1	97.79%	SLO1	93.78%	SLO1	94.86%
SLO2	87.72%	SLO2	87.56%	SLO2	89.95%	SLO2	88.41%
SLO3	87.72%	SLO3	89.97%	SLO3	89.97%	SLO3	89.22%
SLO4	88.66%	SLO4	93.33%	SLO4	88.66%	SLO4	90.22%
ONLINE		ONLINE		ONLINE		ONLINE	
A		B		FULL		ALL	
SLO1	90.66%	SLO1	92.85%	SLO1	90.76%	SLO1	91.42%
SLO2	85.37%	SLO2	83.37%	SLO2	82.57%	SLO2	83.77%
SLO3	92.61%	SLO3	91.93%	SLO3	82.50%	SLO3	89.01%
SLO4	86.81%	SLO4	85.03%	SLO4	89.83%	SLO4	87.22%

Course Learning Outcome Assessment – HUN1201

Spring 20:

FACE TO FACE		ALL SECTIONS COMBINED					
FULL							
SLO1	84.79%	SLO1	89.86%				
SLO2	84.71%	SLO2	82.35%				
SLO3	88.34%	SLO3	85.56%				
SLO4	81.27%	SLO4	86.35%				
HYBRID		HYBRID		HYBRID		HYBRID	
A		B		FULL		ALL	
SLO1	94.02%	SLO1		SLO1	93.23%	SLO1	93.62%
SLO2	85.24%	SLO2		SLO2	73.92%	SLO2	79.58%
SLO3	89.72%	SLO3		SLO3	76.64%	SLO3	83.18%
SLO4	90.77%	SLO4		SLO4	89.14%	SLO4	89.96%
ONLINE		ONLINE		ONLINE		ONLINE	
A		B		FULL		ALL	
SLO1	92.90%	SLO1	90.26%	SLO1	90.34%	SLO1	91.16%
SLO2	83.34%	SLO2	82.83%	SLO2	82.14%	SLO2	82.77%
SLO3	85.72%	SLO3	85.34%	SLO3	84.41%	SLO3	85.16%
SLO4	84.99%	SLO4	85.71%	SLO4	92.73%	SLO4	87.81%

Course Learning Outcome – PET2084

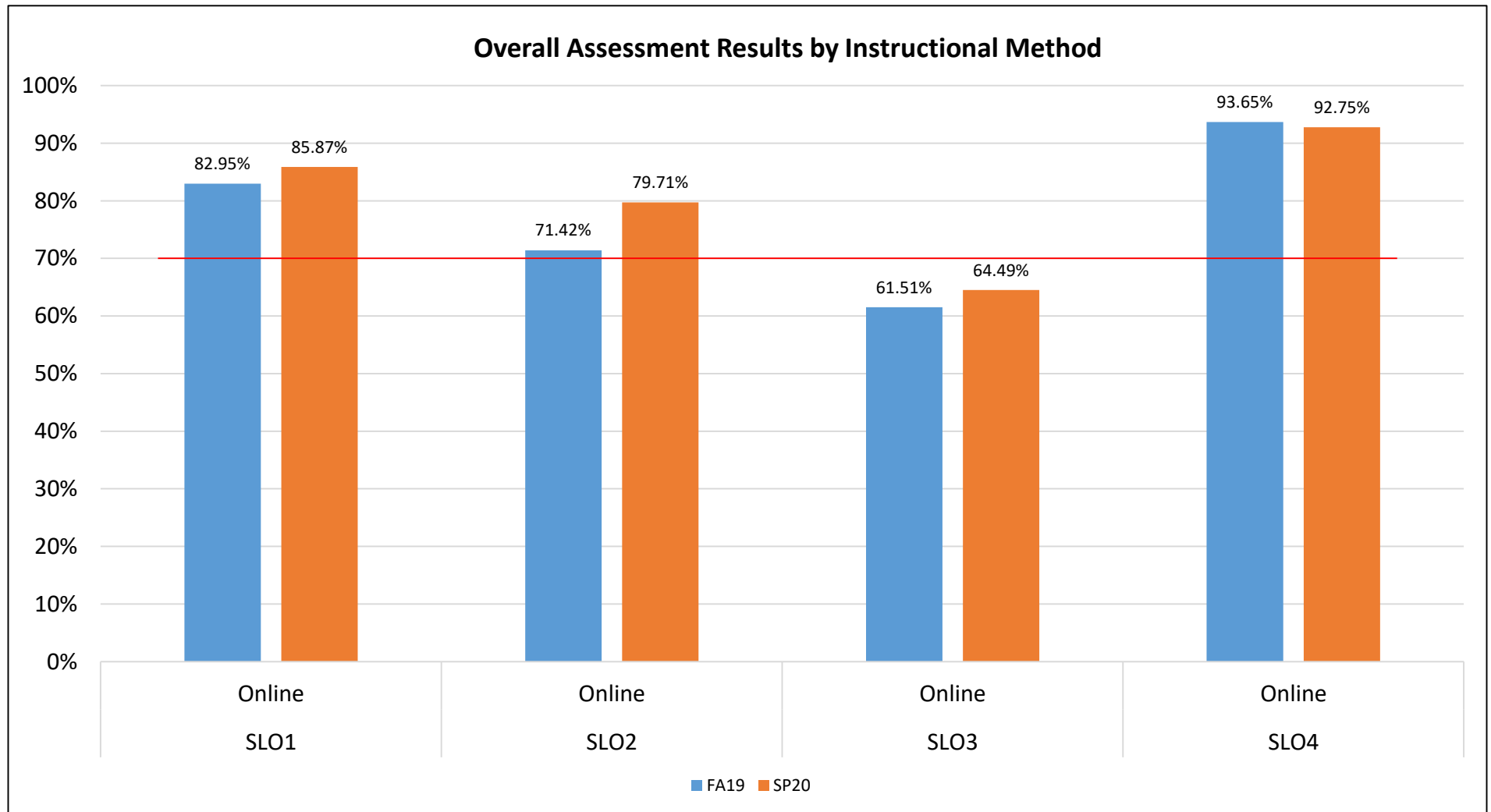
SLO1: Identify various diseases processed and evaluate those to determine how lifestyle factors impact the disease process, and identify positive/healthy lifestyle choices that would delay the gradual onset of chronic diseases. (1,2,3,4)

SLO 2: Integrate nutritional thinking into daily life by analyzing and evaluating how personal food and lifestyle choices impact overall health, well-being, and the world in which we live. (1,2,4)

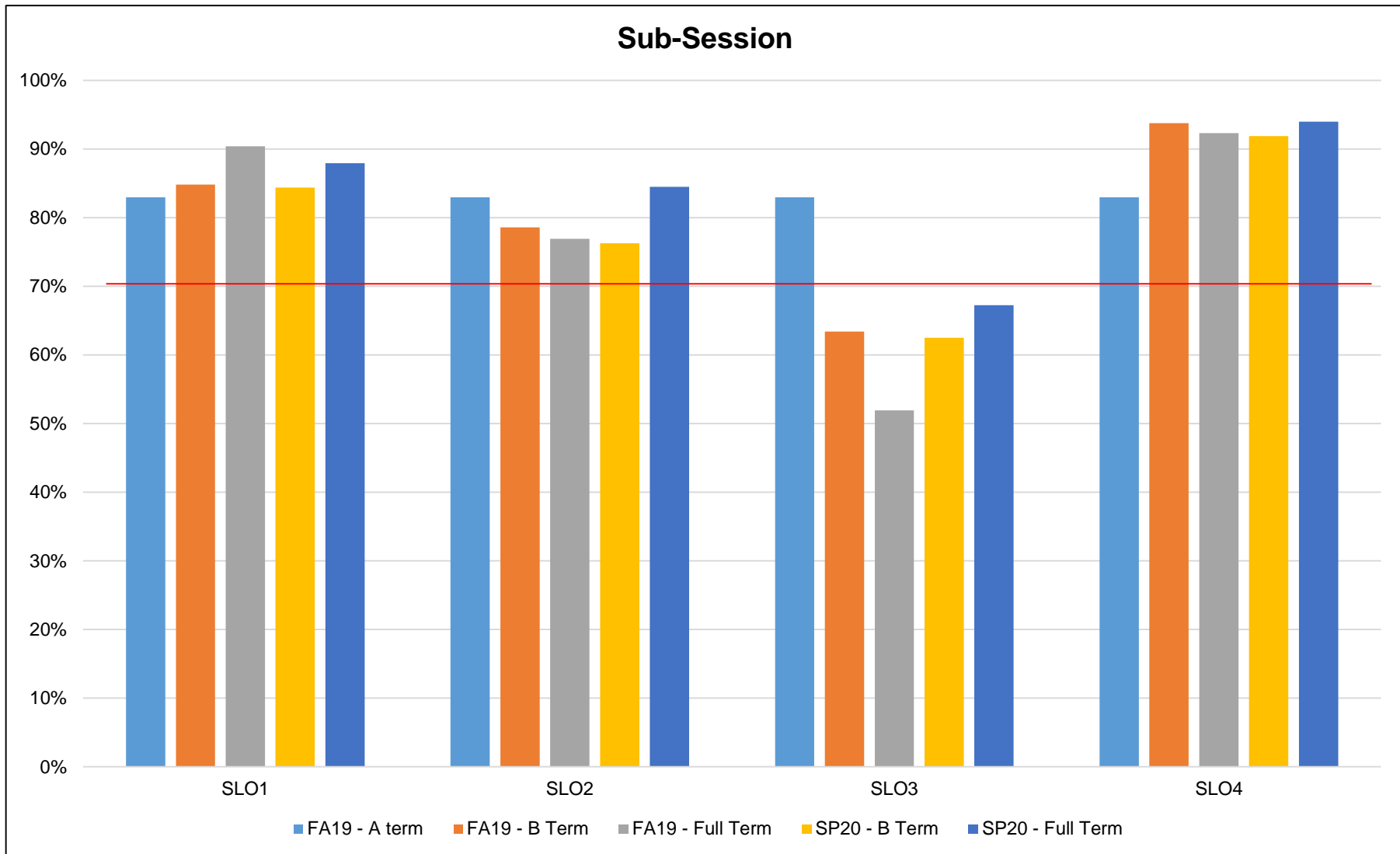
SLO 3: Identify personal exercise and fitness behaviors that are healthy and will assist in the developing a pattern of behavior which lends itself to a positive overall healthy lifestyle. (1,2,4)

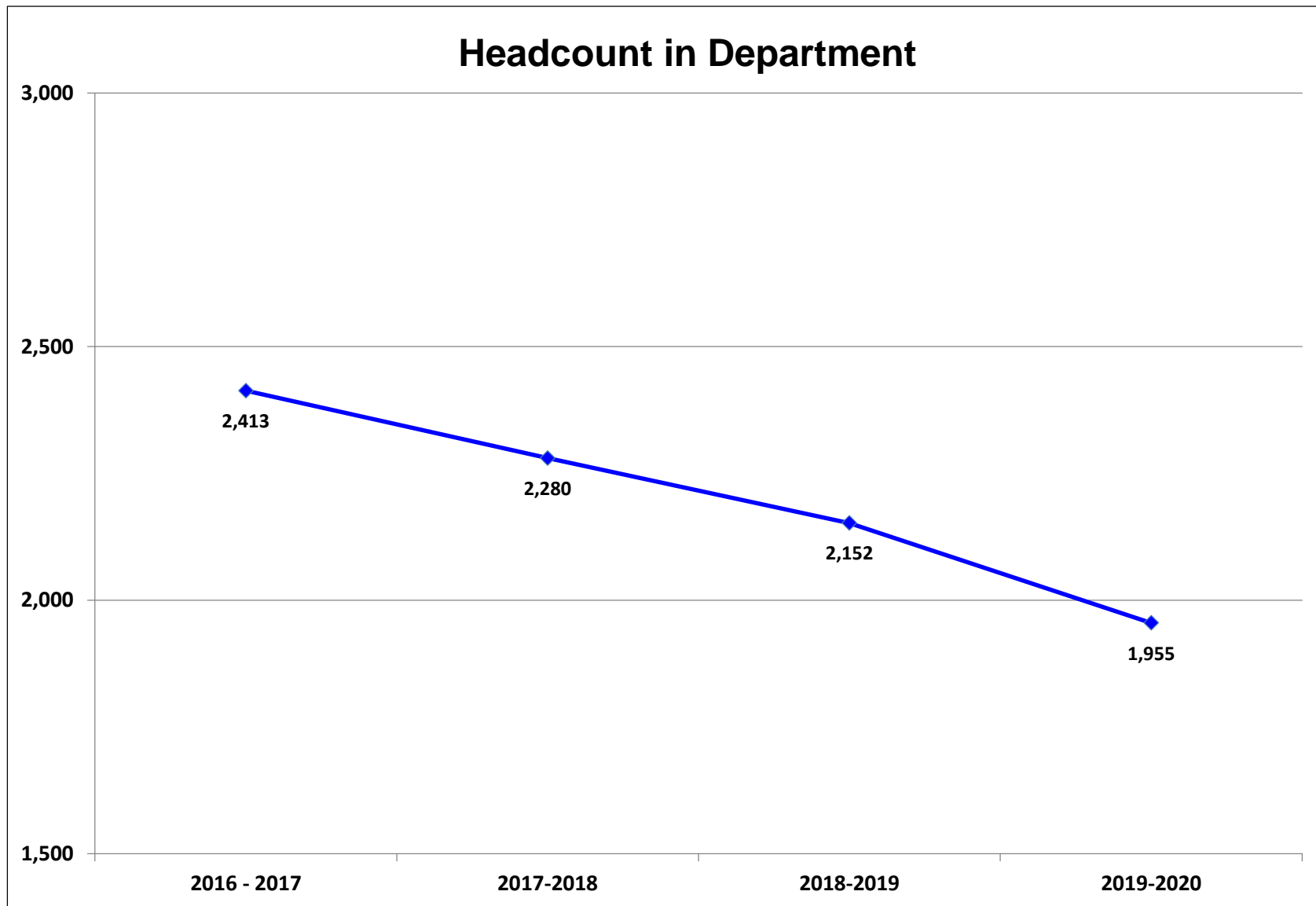
SLO 4: Apply evidence-based information to answer questions that explore assumptions, concepts, and recommendations regarding one's personal behaviors as they relate to one's overall personal health and wellness (Health Continuum) and behavior change process. (1,2,4)

Course Learning Outcome Assessment – PET2084



Course Learning Outcome Assessment – PET2084





Dual Enrollment count for 2019-2020: 433

Course Success Rate

Associated Courses	2016-2017		2017-2018		2018-2019		2019-2020	
	Attempted	% Successful	Attempted	% Successful	Attempted	% Successful	Attempted	% Successful
HLP1081	104	85%	73	86%	10	80%	14	86%
HUN1201	2034	84%	2064	82%	1995	84%	1761	86%
HUN1270	27	93%			33	97%	29	93%
PET2621			16	100%	9	78%		
PET2084	421	76%	276	82%	224	82%	256	89%
Total	2586	83%	2429	82%	2271	84%	2060	86%

■ Indicates a success rate of 90% or higher
■ Indicates a success rate between 70% and 89%
■ Indicates a success rate below 70%

Course Success Rate by Campus – Multiple Campuses Only

Associated Courses and Campus	2016-2017		2017-2018		2018-2019		2019-2020		
	Attempted	% Successful	Attempted	% Successful	Attempted	% Successful	Attempted	% Successful	
HUN1201	Daytona	485	90%	578	85%	792	86%	667	87%
	Deland	144	94%	132	80%	118	86%	110	91%
	Deltona	114	84%	113	80%	66	85%	81	84%
	Flagler/Palm Cst	169	83%	168	85%	241	85%	29	93%
	New Smyrna	45	80%	37	97%	52	87%	36	64%
	Online			1,036	79%	726	80%	838	85%
PET2084	Daytona				70	81%	79	90%	
	Online				154	82%	177	88%	
Total	957*	88%	2,429	82%	2,271	84%	2,060	86%	

*Excludes fully online courses

- Indicates a success rate of 90% or higher
- Indicates a success rate between 70% and 89%
- Indicates a success rate below 70%

Source: IR Program Assessment Data

School Course Success Rate by Campus – Overall

Campus	2016-2017		2017-2018		2018-2019		2019-2020	
	Attempted	% Successful	Attempted	% Successful	Attempted	% Successful	Attempted	% Successful
Daytona	654	87%	693	85%	914	86%	789	87%
DeLand	144	94%	132	92%	118	86%	110	91%
Deltona	114	84%	113	80%	66	85%	81	84%
Flagler/Palm Cst	169	83%	168	85%	241	85%	29	93%
New Smyrna Beach	45	80%	37	97%	52	87%	36	64%
Online			1,286	79%	880	81%	1015	85%
Total	1126*	87%	2,429	82%	2,271	84%	2,060	86%

*Excludes fully online courses

■ Indicates a success rate of 90% or higher
■ Indicates a success rate between 70% and 89%
■ Indicates a success rate below 70%

Source: IR Program Assessment Data

Course Success Rate By Instructional Method – Multiple Methods Only

Associated Courses and Instructional Method	2016-2017		2017-2018		2018-2019		2019-2020			
	Attempted	% Successful	Attempted	% Successful	Attempted	% Successful	Attempted	% Successful		
HUN1201	Hybrid	323	88%	460	84%	495	84%	408	90%	↑
	Lecture	634	88%	539	87%	421	86%	124	77%	
	Online	1077	80%	1065	79%	1079	83%	1229	85%	↑
PET2084	Lecture	38	55%	26	77%					
	Online	383	79%	250	82%	224	82%	256	89%	↑
DSC	Hybrid		81%		83%		81.9%		82.2%	
	Lecture		81%		83%		82.5%		80.3%	
	Online		76%		78%		79.9%		81.2%	

■ Indicates a success rate of 90% or higher
■ Indicates a success rate between 70% and 89%
■ Indicates a success rate below 70%

Source: IR Program Assessment Data

School Course Success Rate By Instructional Method

Instructional Method	2016-2017		2017-2018		2018-2019		2019-2020	
	Attempted	% Successful	Attempted	% Successful	Attempted	% Successful	Attempted	% Successful
Hybrid	323	88%	460	84%	495	84%	408	90%
Lecture	803	86%	653	87%	473	87%	167	81%
Online	1460	80%	1315	79%	1303	83%	1485	86%
Total	2586	83%	2428	82%	2271	84%	1774	86%



■ Indicates a success rate of 90% or higher
■ Indicates a success rate between 70% and 89%
■ Indicates a success rate below 70%

Course Success Rates- Multiple Sessions or Sub-sessions Only

Associated Courses and Sub-session			2016-2017		2017-2018		2018-2019		2019-2020		
			Attempted	% Successful	Attempted	% Successful	Attempted	% Successful	Attempted	% Successful	
HLP1081	FA	Full term	45	80%	24	83%	10	80%	14	86%	↑
	SP	Full term	59	88%	49	88%					
HUN1201		A term	124	85%	218	85%	135	92%	194	88%	↑
	FA	B term	110	73%	106	69%	158	84%	188	76%	
		Full term	521	87%	504	84%	555	83%	334	80%	
		A term	150	87%	105	83%	197	89%	228	94%	
	SP	B term	143	76%	122	69%	200	74%	192	90%	
		Full term	585	82%	566	84%	380	81%	262	85%	
	SU	Full term	401	87%	443	83%	370	88%	363	88%	
HUN1270	FA	Full term					12	100%	14	100%	↑
	SP	Full term					21	95%	15	87%	
PET2084		A term	69	75%	24	83%	18	100%	24	83%	↑
	FA	B term	36	64%	23	70%	30	77%	33	88%	
		Full term	56	71%	61	84%	20	75%	15	87%	
		A term	44	77%	19	89%	27	96%	29	86%	
	SP	B term	33	76%	36	81%	42	74%	41	98%	
		Full term	65	77%	50	86%			35	83%	
	SU	Full term	118	83%	63	78%	87	80%	79	90%	

■ Indicates a success rate of 90% or higher
■ Indicates a success rate between 70% and 89%
■ Indicates a success rate below 70%

Source: IR Program Assessment Data

School Course Success Rate By Sub-session

Session and Sub-session		2016-2017		2017-2018		2018-2019		2019-2020	
		Attempted	% Successful	Attempted	% Successful	Attempted	% Successful	Attempted	% Successful
FA	A term	193	82%	242	85%	153	93%	218	88%
	B term	146	71%	129	69%	188	82%	221	77%
	Full term	649	85%	604	84%	597	83%	377	81%
	Session Total	988	82%	975	82%	938	84%	816	82%
SP	A term	194	85%	124	84%	224	90%	257	93%
	B term	176	76%	158	72%	242	74%	233	91%
	Full term	709	82%	665	85%	410	82%	312	85%
	Session Total	1079	81%	947	82%	876	82%	802	89%
SU	Full term	519	86%	506	82%	457	86%	442	88%
Total		2586	83%	2429	82%	2271	84%	2060	86%

■ Indicates a success rate of 90% or higher
■ Indicates a success rate between 70% and 89%
■ Indicates a success rate below 70%

Source: IR Program Assessment Data

Course Success Rate By IM and Session/Sub-session

Course, IM, Session/ Sub-session	2018-2019		2019-2020	
	Enrolled	Success Rate	Enrolled	Success Rate
HLP1081	10	80%	14	86%
Lecture	10	80%	14	86%
Fall	10	80%	14	86%
Full term	10	80%	14	86%
HUN1201	1995	84%	1761	86%
Online	1079	83%	1229	85%
Summer	316	89%	307	87%
Fall	380	81%	469	78%
Full term	224	76%	253	79%
A term	81	93%	87	84%
B term	75	81%	129	72%
Spring	383	80%	453	90%
Full term	193	78%	170	88%
A term	80	85%	133	91%
B term	110	78%	150	92%
Lecture	421	86%	124	77%
Fall	276	87%	53	77%
Full term	276	87%	53	77%
Spring	145	86%	71	77%
Full term	145	86%	44	80%
B term			27	74%
Hybrid	495	84%	408	90%
Summer	54	81%	56	93%
Fall	192	88%	194	89%
Full term	55	89%	28	93%
A term	54	91%	107	92%
B term	83	86%	59	83%
Spring	249	81%	158	91%
Full term	42	79%	48	77%
A term	117	91%	95	98%
B term	90	69%	15	93%

Course, IM, Session/ Sub-session	2018-2019		2019-2020	
	Enrolled	Success Rate	Enrolled	Success Rate
HUN1270	33	97%	29	93%
Lecture	33	97%	29	93%
Fall	12	100%	14	100%
Full term	12	100%	14	100%
Spring	21	95%	15	87%
Full term	21	95%	15	87%
PET2084	224	82%	256	89%
Online	224	82%	256	89%
Summer	87	80%	79	90%
Fall	68	82%	72	86%
Full term	20	75%	15	87%
A term	18	100%	24	83%
B term	30	77%	33	88%
Spring	69	83%	105	90%
Full term			35	83%
A term	27	96%	29	86%
B term	42	74%	41	98%
PET2621	9	78%		
Lecture	9	78%		
Spring	9	78%		
Full term	9	78%		

■ Indicates a success rate of 90% or higher
■ Indicates a success rate between 70% and 89%
■ Indicates a success rate below 70%

Source: IR Program Assessment Data

Course Success Rates for Dual Enrolled Students

Course	2017-2018		2017-2018 Overall	2018-2019		2018-2019 Overall	2019-2020		2019-2020 Overall
	Attempted	% Successful		Attempted	% Successful		Attempted	% Successful	
HLP1081	1	100%	86%	1	100%	80%	1	100%	86%
HUN1201	215	93%	82%	353	92%	84%	420	92%	86%
HUN1270				2	100%	97%	5	100%	93%
PET2084	7	86%	82%				32	88%	89%
PET2621				1	100%	78%			
Total	223	92%		370	92%		458	91%	

■ Indicates a success rate of 90% or higher
■ Indicates a success rate between 70% and 89%
■ Indicates a success rate below 70%

Source: IR Program Assessment Data

Course Success Rate By Race/Ethnicity

Course and Race/Ethnicity	2018-2019		2019-2020	
	Enrolled	Success Rate	Enrolled	Success Rate
HLP1081	10	80%	14	86%
Black	1	100%	5	80%
Hispanic/Latino	2	100%		
White	7	71%	9	89%
HUN1201	1995	84%	1761	86%
American Indian/Alas	3	100%	4	75%
Asian	48	96%	42	88%
Black	240	74%	217	78%
Hispanic/Latino	336	84%	334	83%
Native Hawaiian			3	100%
Two or More Races	82	80%	73	85%
Unknown	49	76%	32	88%
White	1237	86%	1056	88%
HUN1270	33	97%	29	93%
Asian	1	100%	1	100%
Black	4	100%	3	100%
Hispanic/Latino	5	100%	3	67%
Two or More Races	1	100%	4	100%
White	22	95%	18	94%
PET2084	224	82%	256	89%
American Indian/Alas			1	100%
Asian	4	25%	1	100%
Black	42	81%	41	93%
Hispanic/Latino	35	83%	45	87%
Two or More Races	8	88%	9	100%
Unknown	4	75%	4	100%
White	131	83%	155	87%
PET2621	9	78%		
Black	2	100%		
Hispanic/Latino	1	0%		
Unknown	1	100%		
White	5	80%		
Grand Total	2271	84%	2060	86%

■ Indicates a success rate of 90% or higher
■ Indicates a success rate between 70% and 89%
■ Indicates a success rate below 70%

Source: IR Program Assessment Data

Overall Course Success Rate By Race/Ethnicity

Course and Race/Ethnicity	2018-2019		2019-2020	
	Enrolled	Success Rate	Enrolled	Success Rate
American Indian/Alas	3	100%	5	80%
Asian	53	91%	44	89%
Black	289	75%	266	81%
Hispanic/Latino	379	84%	382	83%
Native Hawaiian			3	100%
Two or More Races	91	81%	86	87%
Unknown	54	76%	36	89%
White	1402	86%	1238	88%
Grand Total	2271	84%	2060	86%

■ Indicates a success rate of 90% or higher
■ Indicates a success rate between 70% and 89%
■ Indicates a success rate below 70%

Course Success Rate By Campus (Multiple Only) and Race/Ethnicity

Course and Race/Ethnicity	2019-2020	
	Enrolled	Success Rate
HUN1201	1761	86%
Daytona	667	87%
American Indian/Alas	2	50%
Asian	13	100%
Black	104	74%
Hispanic/Latino	119	87%
Native Hawaiian/Paci	1	100%
Two or More Races	27	93%
Unknown	5	100%
White	396	90%
Deltona	81	84%
Black	10	80%
Hispanic/Latino	34	79%
Two or More Races	3	67%
White	34	91%
Deland	110	91%
Asian	3	100%
Black	9	89%
Hispanic/Latino	26	85%
Two or More Races	4	75%
Unknown	2	100%
White	66	94%
Flagler	29	93%
American Indian/Alas	1	100%
Asian	2	100%
Black	1	100%
Hispanic/Latino	5	80%
Two or More Races	1	100%
White	19	95%

Course and Race/Ethnicity	2019-2020	
	Enrolled	Success Rate
HUN1201	1761	86%
New Smyrna Beach	36	64%
Asian	1	100%
Black	3	33%
Hispanic/Latino	3	33%
Two or More Races	2	0%
Unknown	2	100%
White	25	72%
Online	838	85%
American Indian/Alas	1	100%
Asian	23	78%
Black	90	83%
Hispanic/Latino	147	82%
Native Hawaiian/Paci	2	100%
Two or More Races	36	86%
Unknown	23	83%
White	516	86%
PET2084	256	89%
Daytona	79	90%
Black	15	93%
Hispanic/Latino	16	94%
Two or More Races	3	100%
Unknown	1	100%
White	44	86%
Online	177	88%
American Indian/Alas	1	100%
Asian	1	100%
Black	26	92%
Hispanic/Latino	29	83%
Two or More Races	6	100%
Unknown	3	100%
White	111	87%
Grand Total	2060	86%

Indicates a success rate of 90% or higher

Indicates a success rate between 70% and 89%

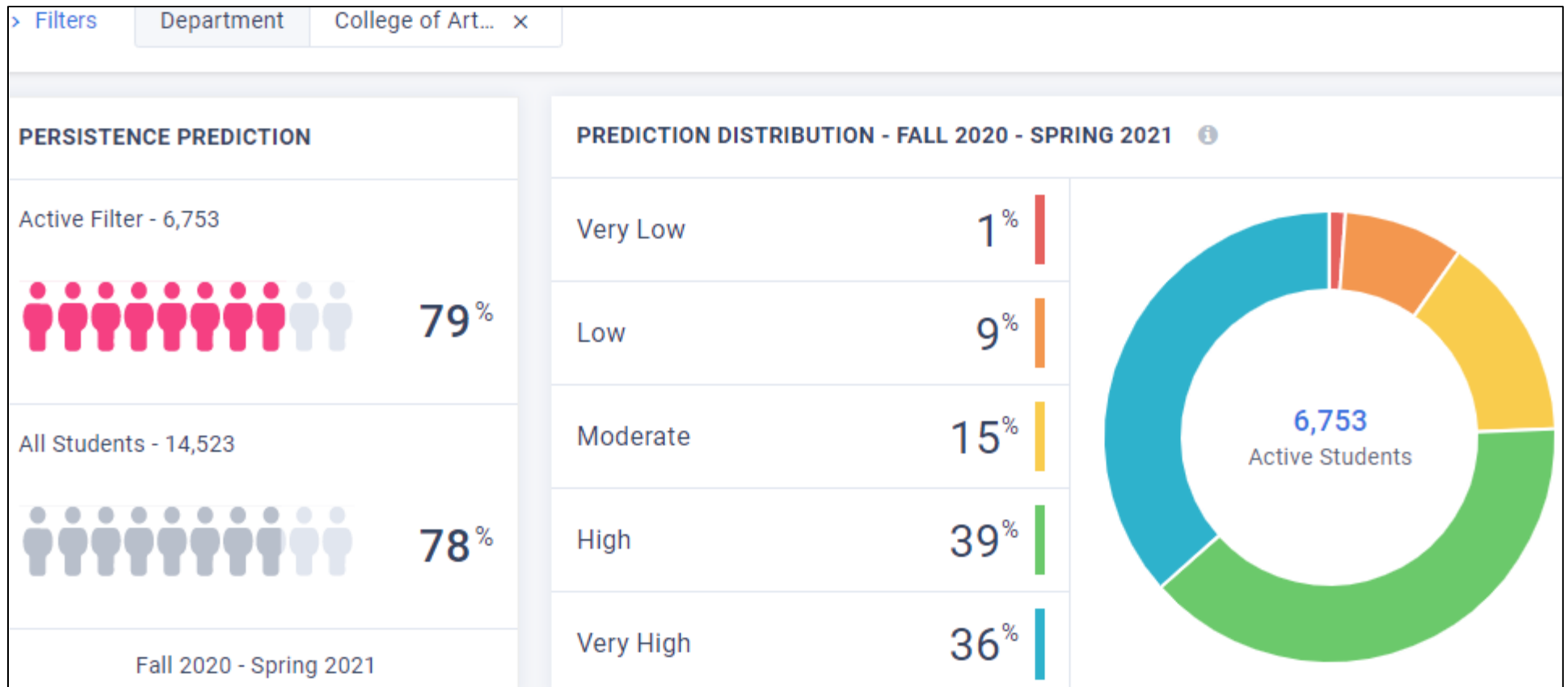
Indicates a success rate below 70%

Course Success Rate By Modality (Multiple Only) and Race/Ethnicity

Course and Race/Ethnicity	2019-2020	
	Enrolled	Success Rate
HUN1201	1761	86%
Online	1229	85%
American Indian/Alas	2	100%
Asian	30	83%
Black	141	77%
Hispanic/Latino	233	83%
Native Hawaiian/Paci	3	100%
Two or More Races	51	88%
Unknown	27	85%
White	742	87%
Lecture	124	77%
Asian	3	100%
Black	17	65%
Hispanic/Latino	10	80%
Two or More Races	6	50%
Unknown	2	100%
White	86	80%
Hybrid	408	90%
American Indian/Alas	2	50%
Asian	9	100%
Black	59	85%
Hispanic/Latino	91	82%
Two or More Races	16	88%
Unknown	3	100%
White	228	95%

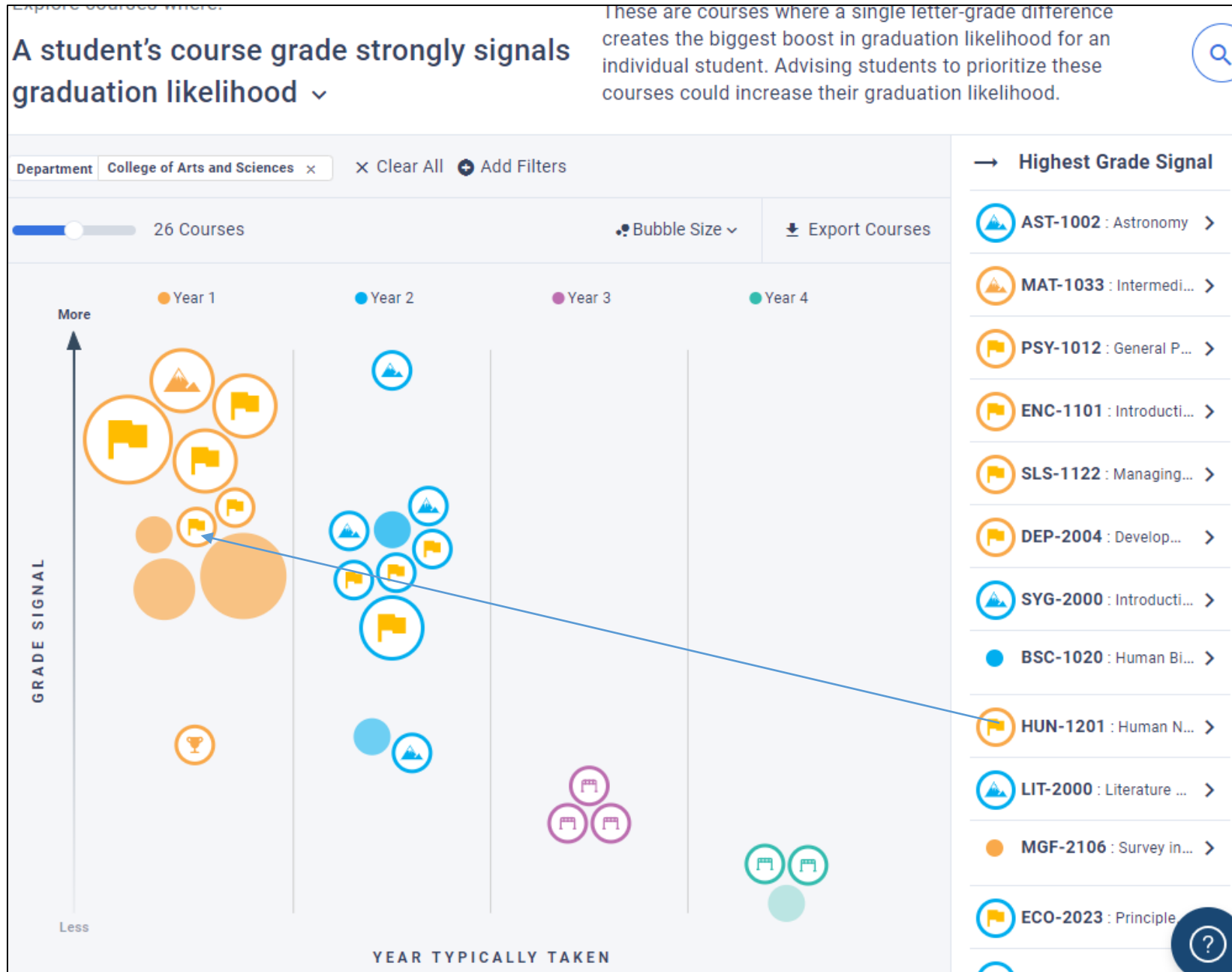
■ Indicates a success rate of 90% or higher
■ Indicates a success rate between 70% and 89%
■ Indicates a success rate below 70%

Civitas



Screen captured on 10/6/2020

Civitas





2020-2021

Academic Affairs

Assessment Day – Program Guides

*A Review of Program Guide and Course Catalog
Information*

Program Guides - Overview

- Given Assessment Day results, are there any changes needed to or desired for the Program Guide?
- Please Review:
 - Program Information
 - General Education Course Selections (if applicable)
 - Program Course Catalog Information
 - Program of Study

Program Guides – Information Review

- Mission statement
 - Does it accurately state the purpose and goals of the program?
- Description
 - Does it clearly portray the nature of the program and any unique characteristics (i.e. embedded certificates, industry certifications, program accreditations, etc.)?

Program Guides – General Ed. Review

- General Education Courses *(if applicable)*
 - Are the selection of courses aligned with the academic knowledge students need to be successful in the related field(s)/occupations?
 - Must be a minimum of 15 credit hours for A.S. programs
(F.A.C. [6A-10.024](#))
 - Must include ENC1101 and a Math Core course
 - Do the selection of courses allow for seamless transition to the Baccalaureate level (if applicable)?

Program Guides – Course Reqs. Review

- Program Specific Course Requirements
 - Are the courses relevant to the academic and technical skills required in the related field(s)/occupation(s)?
 - Are there any required courses offered by another department? If so, consult with that department on upcoming changes (if any).
 - Are there any courses that have not been offered in over 5 years?

Program Guides – Course Info. Review

- Program Specific Course Catalog Information
 - Is the course description accurate?
 - Are the course prefix, number and/or title relevant?
 - Are the term offerings up-to-date?
 - Are the prerequisite and corequisite course assignments appropriate to what students need to know to be successful in the requisite (*required*) course?

Program Guide – Program of Study Review

- Program of Study
 - Is the sequence of courses structured from foundational to advanced content, as appropriate?
 - Does the sequence align with course, term offerings?
 - Does the sequence align with course, prerequisite/co-requisite assignments?
 - Are there any special notes/information missing, incorrect or desired?