

ASSESSMENT DAY

College of Arts and Sciences

School of Humanities and Communications

November 12, 2015

Academic Assessment



TYPE OF REVIEW	LEVEL	FOCUS	CONDUCTED BY	FREQUENCY
Academic Success Committee Review	Program	<ul style="list-style-type: none"> Quality of assessment practices 	PC - Academic Success Committee	Years 1 & 2
Instructional Program Review	Program / Cluster	<ul style="list-style-type: none"> Enrollment, retention, completion trends Industry certifications and job placement trends Program cost and staffing trends Advisory committees, curriculum changes 	PC - Instructional Program Review Committee	Year 3
Assessment Day	Course/ Program	<ul style="list-style-type: none"> Enrollment by department, program and course and by age, gender and race Number of graduates, average class size Course success rate by instructional method, by campus and by sub-session Job placement Student learning outcomes and institutional learning outcomes 	Program Chair, Faculty (data provided by Institutional Effectiveness and Institutional Research)	Years 1, 2, 3

Courses

- [AML2050](#) Modern American Literature
- [AML2060](#) Contemporary American Literature
- [AML2600](#) Introduction to African American Literature
- [CRW2100](#) Fiction Writing
- [CRW2300](#) Poetry Writing
- [EAP1501](#) Accent Reduction
- [ENC0025](#) Writing
- [ENC0025L](#) Writing Lab
- [ENC0055L](#) The English Studio
- [ENC1101](#) Introduction to Composition
- [ENC1102](#) Writing with Research
- [ENC2210](#) Report Writing
- [ENG2100](#) Introduction to Film
- [ENL2330](#) Introduction to Shakespeare
- [HUM2020](#) Introduction to Humanities
- [HUM2210](#) Prehistory to Medieval Humanities
- [HUM2230](#) Renaissance to Postmodern Humanities
- [HUM2740](#) Humanities Overseas Study Program
- [HUM2905](#) Directed Study in Humanities
- [HUM2949](#) Cooperative Education Experience in Humanities
- [JOU1100](#) Introduction to Journalism
- [JOU2905](#) Directed Study in Journalism
- [JOU2949](#) Cooperative Education Experience in Journalism
- [LIN1670](#) English Grammar, Usage and Composition
- [LIT2000](#) Literature and Culture
- [LIT2030](#) Understanding Poetry
- [LIT2040](#) Dramatic Literature
- [LIT2110](#) Masterpieces of World Literature I
- [LIT2120](#) Masterpieces of World Literature II
- [LIT2380](#) Literature By Women
- [LIT2602](#) Maritime Literature
- [MMC1000](#) Introduction to Mass Communication
- [REA0017](#) Reading
- [REA0017L](#) Reading Lab
- [REA1105](#) Critical Reading Techniques
- [RTV2104](#) Broadcast Research/Newsriting/Presentation Skills
- [RTV2949](#)

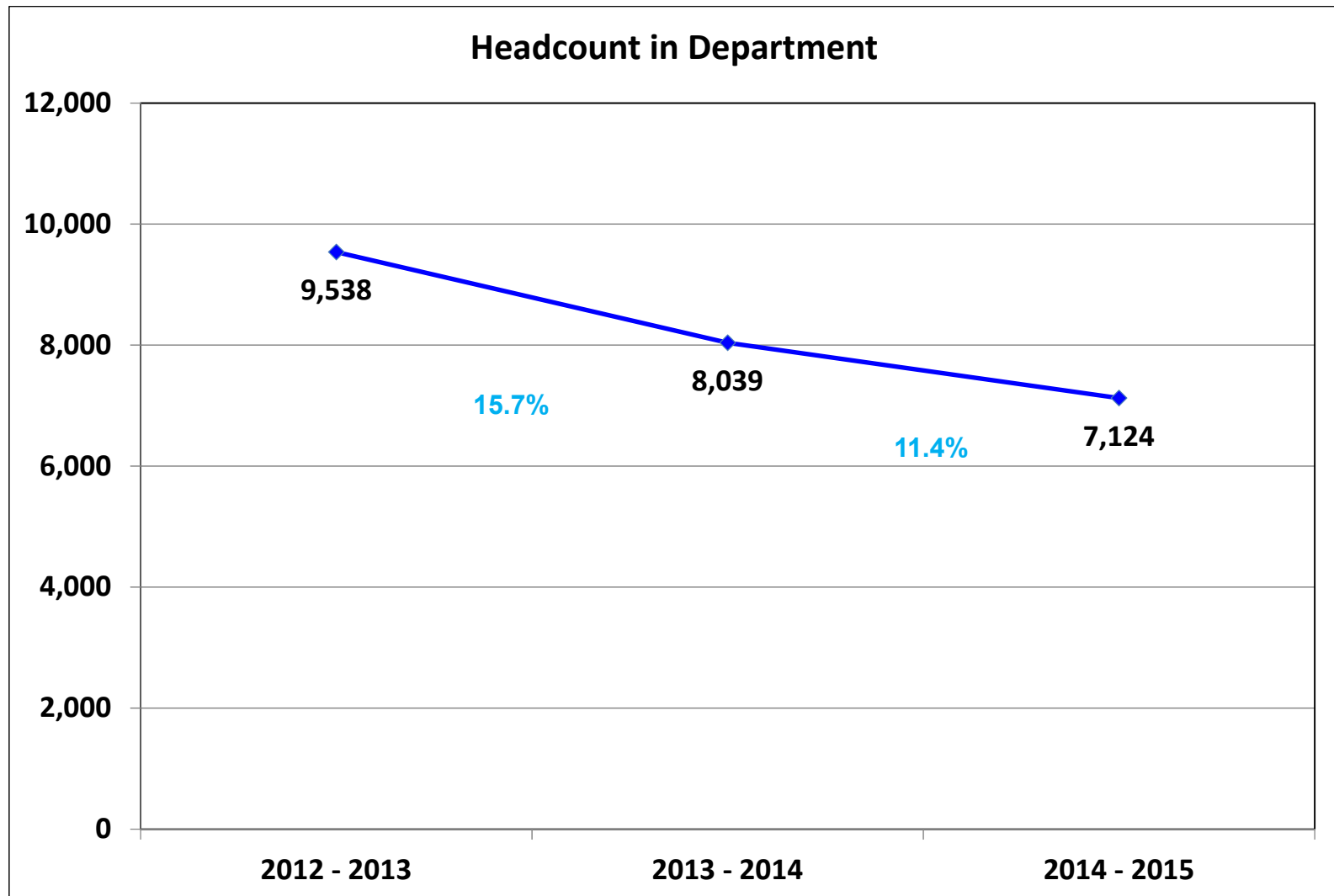
Last Assessment Day – Action Items

Institutional Effectiveness

- Track students taking the Studio course and look at changes in success rates for next year (13/14 – 14/15).

School of Humanities and Communication

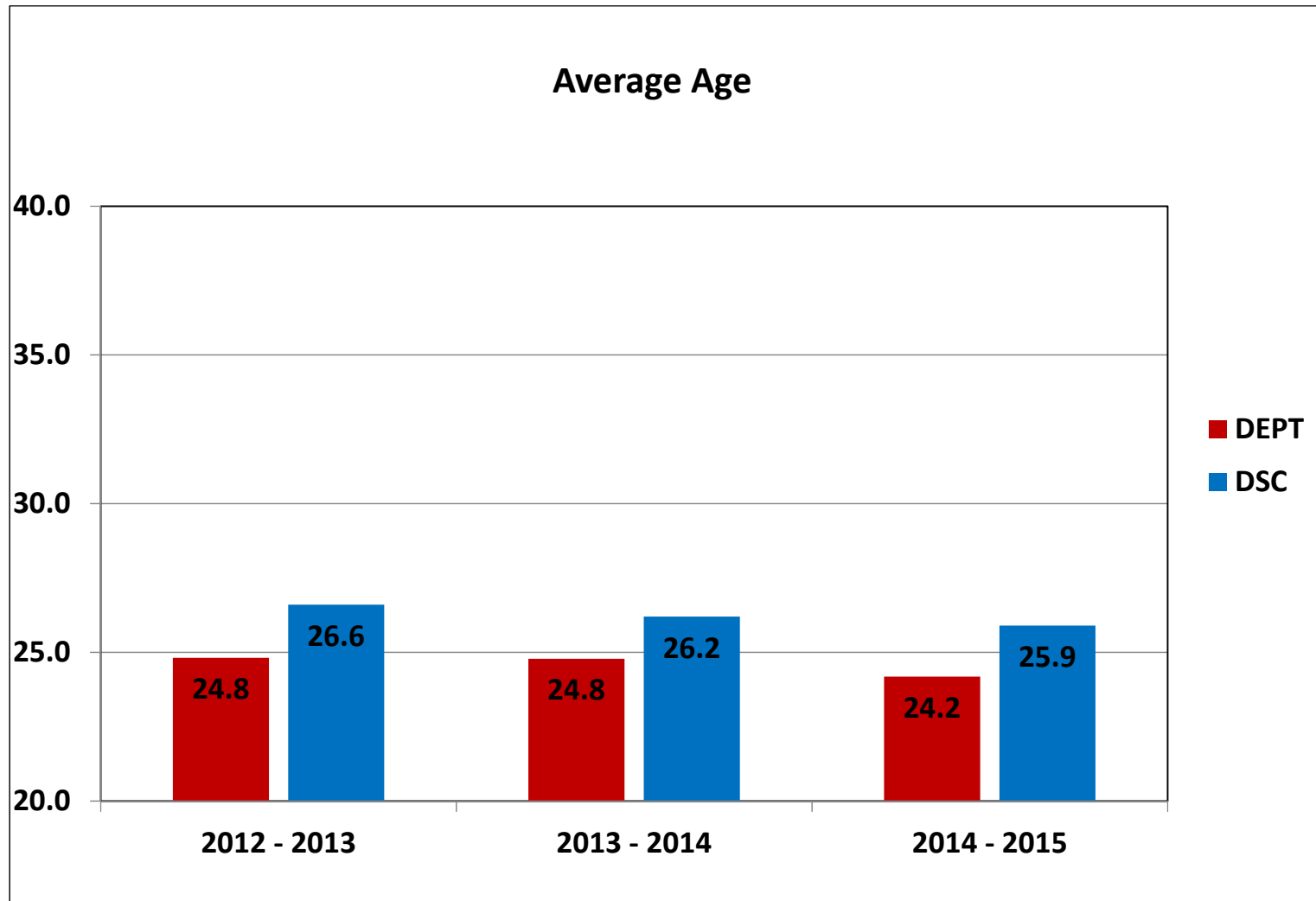
- Check College website course offering to see if some of them need to be removed or added.
- Research possibility of reducing online class size to increase students' success rates.
- Translate best practices into an online environment.
- Assessment data:
 - Include another course to assess
 - Look at reducing the number of course outcomes
 - Outcomes must be measured twice in a period of 3 years.



College Headcount decreased: 2012/13 (9.6%), 2013/14 (6%), 2014/15 (7%)

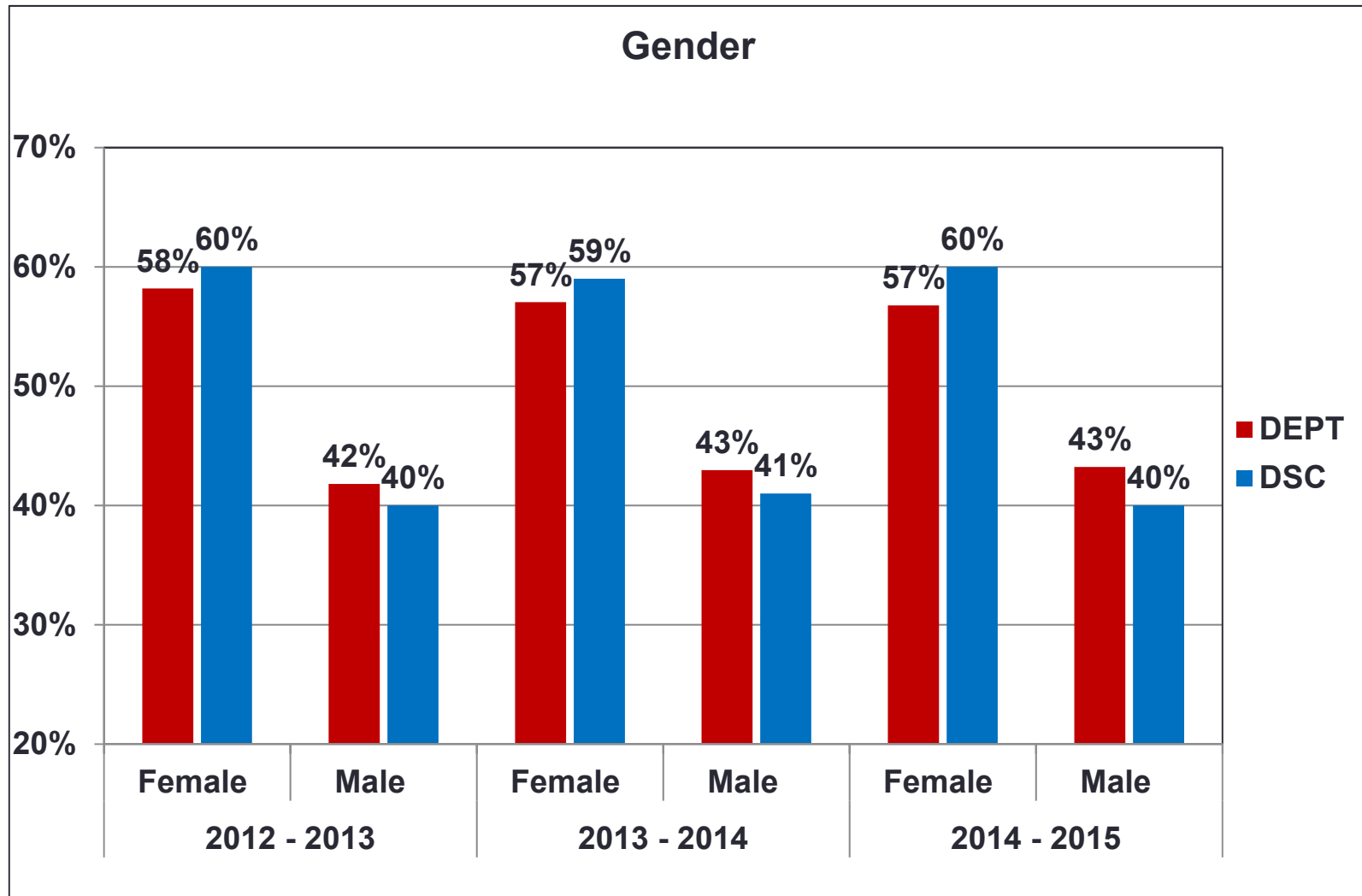
Headcount in department includes students taking courses in the department.

Source: IR Program Assessment Data



Calculation excludes individuals whose birthdates are not reported.

Source: IR Program Assessment Data



Source: IR Program Assessment Data

Excludes individuals whose gender is not reported.

Enrollment by Race/Ethnicity

Humanities and Communication	2012 - 2013		2013 - 2014		2014 - 2015		DSC 2014/15
	#	%	#	%	#	%	
American Indian / Alaska Native	43	0.5%	40	1%	34	0.5%	0.4%
Asian	240	3%	196	2%	184	3%	2%
Black or African American	1,352	14%	1,238	16%	1,097	16%	14%
Hispanic	1,208	13%	1,069	13%	1,046	15%	15%
Native Hawaiian / Pacific Islander	12	0.1%	17	0.2%	22	0.3%	0.2%
Two or More Races	155	2%	158	2%	161	2%	1%
White	6,449	68%	5,217	66%	4,461	64%	67%

Excludes individuals whose race / ethnicity is not reported.

Source: IR Program Assessment Data

Average Class Size by Course

Dept. and Associated Courses		2012-2013		2013-2014		2014-2015	
		Sections	Avg. Size	Sections	Avg. Size	Sections	Avg. Size
Humanities/ Communication	AML2050	6	28	5	27	4	29
	AML2060	3	27	6	24	10	27
	AML2600	6	23	6	23	5	25
	CRW2100	2	21	2	18	2	18
	CRW2300	2	13	1	17		
	ENC0015	17	19	11	19		
	ENC0025	41	18	48	17	20	17
	ENC0055L			3	4	70	8
	ENC1101	196	23	201	22	205	22
	ENC1102	162	22	154	21	148	22
	ENC2210	2	25	2	22	2	24
	ENG2100	2	21	2	12	2	22
	ENL2931	2	19	2	13	2	20
	HUM2210	24	26	16	27	12	26
	HUM2230	8	23	4	27	2	27
	HUM2740	1	12	1	9		
	JOU1100	2	10	2	13	2	16
	LIN1670					7	11
	LIT2040	1	5	1	11	1	7
	LIT2110	3	25	4	23	3	24
	LIT2120	2	22	4	12	1	21
	LIT2380	1	6				
	LIT2602	1	30	1	29	1	29
	MMC1000	1	14	2	19	2	22
	REA0007	11	16	9	16		
	REA0017	53	19	55	20	21	18
	REA0055L			2	5		
	REA1105					4	10
	RTV2300	7	23	7	24	7	24
	Total		556	22	551	21	533

Blank cells or missing years indicate no enrollment.

To prevent data from skewing, the following instructional methods are excluded: Labs associated with lectures, Private/Performance, OJT, Clinicals, Co-op, DIS, Field trips and Internships.

Source: IR Program Assessment Data

Average Class Size – Multiple Methods Only (1 of 2)

Dept., Associated Courses and Instructional Method			2012-2013		2013-2014		2014-2015	
			Sections	Avg. Size	Sections	Avg. Size	Sections	Avg. Size
Humanities/ Communication	AML2050	Lecture	4	27	4	26	4	29
		Online	2	29	1	32		
		Total	6	28	5	27	4	29
	AML2060	Hybrid			3	22	3	23
		Lecture	1	29	1	16	1	15
		Online	2	26	2	30	6	30
		Total	3	27	6	24	10	27
	AML2600	Lecture	4	19	4	19	3	22
		Online	2	30	2	30	2	31
		Total	6	23	6	23	5	25
	ENC0025	Hybrid			1	19	3	16
		Lecture	41	18	47	17	17	18
		Total	41	18	48	17	20	17
	ENC0055L	Lecture			3	4	65	8
		Online					5	1
		Total			3	4	70	8
	ENC1101	Hybrid	5	23	5	20	6	19
		Lecture	165	23	166	22	165	23
		Online	26	23	30	24	34	22
		Total	196	23	201	22	205	22
	ENC1102	Hybrid	9	21	5	19	5	21
Lecture		122	22	117	21	112	22	
Online		31	23	32	22	31	23	
Total		162	22	154	21	148	22	

Years are reporting years, SU-SP.

Blank cells or missing years indicate no enrollment.

To prevent data from skewing, the following instructional methods are excluded: labs associated with lectures, Private/Performance, OJT, clinicals, co-op, DIS, field trips and internships.

Average Class Size – Multiple Methods Only (2 of 2)

Dept., Associated Courses and Instructional Method			2012-2013		2013-2014		2014-2015	
			Sections	Avg. Size	Sections	Avg. Size	Sections	Avg. Size
Humanities/ Communication	HUM2210	Hybrid	3	26				
		Lecture	15	26	10	26	9	26
		Online	6	28	6	28	3	27
		Total	24	26	16	27	12	26
	HUM2230	Hybrid	3	16				
		Lecture	1	27	1	21	1	25
		Online	4	28	3	29	1	29
		Total	8	23	4	27	2	27
	LIT2110	Lecture	2	23	2	17	1	14
		Online	1	29	2	29	2	30
		Total	3	25	4	23	3	24
	LIT2120	Lecture	1	12	3	12	1	21
		Online	1	31	1	12		
		Total	2	22	4	12	1	21
	REA0017	Hybrid			1	17	3	17
		Lecture	49	19	51	19	16	18
		Online	4	20	3	24	2	21
		Total	53	19	55	20	21	18
	RTV2300	Hybrid	1	15	1	15	1	15
		Lecture	2	18	2	19	2	18
		Online	4	28	4	28	4	29
Total		7	23	7	24	7	24	

College Total

Instructional Method	2012-2013	2013-2014	2014-2015
	Avg. Size	Avg. Size	Avg. Size
Hybrid	22	22	22
Lecture	23	23	22
Online	27	28	29
College Total	23.7	23.9	24.6

Years are reporting years, SU-SP.


Blank cells or missing years indicate no enrollment.

To prevent data from skewing, the following instructional methods are excluded: labs associated with lectures, Private/Performance, OJT, clinicals, co-op, DIS, field trips and internships.

Source: IR Program Assessment Data

Course Success Rate

Dept. and Associated Courses		2012-2013		2013-2014		2014-2015	
		Attempted	% Successful	Attempted	% Successful	Attempted	% Successful
Humanities/ Communication	AML2050	166	77%	135	68%	115	80%
	AML2060	81	89%	141	73%	266	83%
	AML2600	136	71%	137	77%	126	70%
	CRW2100	42	67%	35	89%	35	94%
	CRW2300	25	88%	17	88%		
	ENC0015	321	85%	205	92%		
	ENC0015L	321	85%	205	92%		
	ENC0025	730	85%	820	83%	346	87%
	ENC0025L	730	85%	820	83%	346	87%
	ENC0055L			11	64%	549	72%
	ENC1101	4460	70%	4476	68%	4611	68%
	ENC1102	3517	78%	3251	75%	3231	77%
	ENC2210	50	46%	44	59%	48	54%
	ENG2100	41	95%	23	96%	43	98%
	ENL2931	38	71%	25	64%	40	93%
	HUM2210	631	72%	429	69%	316	73%
	HUM2230	186	78%	108	64%	54	65%
	HUM2740	12	83%	9	78%		
	JOU1100	20	70%	26	77%	32	78%
	LIN1670					80	74%
	LIT2040	5	100%	11	100%	7	100%
	LIT2110	74	78%	90	84%	73	82%
	LIT2120	43	81%	49	71%	21	67%
	LIT2380	6	100%				
	LIT2602	30	80%	29	72%	29	76%
	MMC1000	14	100%	38	68%	44	68%
	REA0007	180	84%	147	88%		
	REA0007L	180	84%	147	88%		
	REA0017	1011	87%	1077	83%	380	81%
	REA0017L	1011	87%	1078	82%	380	81%
	REA0055L			9	56%		
	REA1105					39	64%
	RTV2300	161	71%	165	72%	167	62%
Total	14222	78%	13757	75%	11378	74%	

 Indicates a 70% success rate or higher

Source: IR Program Assessment Data

Course Success Rate by Campus – Multiple Campuses Only (1 of 3)

Dept., Associated Courses and Campus			2012-2013		2013-2014		2014-2015	
			Attempted	% Successful	Attempted	% Successful	Attempted	% Successful
Humanities/ Communication	AML2050	Daytona	57	72%	58	64%	58	81%
		Flagler/Palm Cst	51	76%	45	69%	57	79%
		Total	108	74%	103	66%	115	80%
	AML2060	Daytona			65	66%	70	87%
		Deland	29	97%	16	81%	15	80%
		Total	29	97%	81	69%	85	86%
	ENC0015	Daytona	214	88%	144	94%		
		Deland	16	81%	15	87%		
		Deltona	40	68%	26	85%		
		Flagler/Palm Cst	51	90%	20	95%		
		Total	321	85%	205	92%		
	ENC0015L	Daytona	214	88%	144	94%		
		Deland	16	81%	15	87%		
		Deltona	40	68%	26	85%		
		Flagler/Palm Cst	51	90%	20	95%		
		Total	321	85%	205	92%		
	ENC0025	Daytona	457	84%	465	85%	219	90%
		Deland	69	83%	91	79%	61	84%
		Deltona	81	89%	107	81%		
		Flagler/Palm Cst	101	82%	123	80%	50	80%
		New Smyrna Beach	22	95%	34	79%	16	81%
		Total	730	85%	820	83%	346	87%
	ENC0025L	Daytona	459	84%	461	84%	220	90%
Deland		67	82%	95	80%	58	84%	
Deltona		81	89%	107	81%	2	50%	
Flagler/Palm Cst		101	82%	123	80%	50	80%	
New Smyrna Beach		22	95%	34	79%	16	81%	
Total		730	85%	820	83%	346	87%	
ENC0055L	Daytona			11	64%	310	69%	
	Deland					86	78%	
	Deltona					73	78%	
	Flagler/Palm Cst					53	77%	
	New Smyrna Beach					20	55%	
	Total			11	64%	542	72%	

Excludes fully online courses


 Indicates a 70% success rate or higher

Source: IR Program Assessment Data

Course Success Rate by Campus – Multiple Campuses Only (2 of 3)

Dept., Associated Courses and Campus			2012-2013		2013-2014		2014-2015	
			Attempted	% Successful	Attempted	% Successful	Attempted	% Successful
Humanities/ Communication	ENC1101	Daytona	2074	68%	2022	67%	2006	65%
		Deland	613	75%	589	73%	599	74%
		Deltona	399	71%	408	72%	471	71%
		Flagler/Palm Cst	509	82%	485	80%	528	83%
		New Smyrna Beach	279	69%	262	65%	252	73%
		Total	3874	71%	3766	70%	3856	70%
	ENC1102	Daytona	1462	75%	1341	73%	1316	75%
		Deland	482	80%	407	83%	362	80%
		Deltona	250	82%	282	73%	297	81%
		Flagler/Palm Cst	423	83%	350	85%	386	88%
		New Smyrna Beach	202	81%	160	76%	151	78%
		Total	2819	78%	2540	76%	2512	79%
	HUM2210	Daytona	224	62%	110	50%	109	69%
		Deland	195	78%	151	81%	125	82%
		Deltona	23	83%				
		New Smyrna Beach	19	58%				
	Total	461	70%	261	68%	234	76%	
	HUM2230	Daytona	47	74%				
		Deland	27	89%	21	81%	25	76%
		Total	74	80%	21	81%	25	76%
	HUM2740	Daytona			9	78%		
		Deland	12	83%				
		Total	12	83%	9	78%		
	LIN1670	Daytona					27	70%
		Deltona					19	68%
		Flagler/Palm Cst					34	79%
		Total					80	74%
LIT2040	Daytona			11	100%	7	100%	
	Deltona	5	100%					
	Total	5	100%	11	100%	7	100%	
LIT2120	Daytona			11	82%			
	Deltona	12	92%	17	59%			
	New Smyrna Beach			9	78%	21	67%	
	Total	12	92%	37	70%	21	67%	

Excludes fully online courses

 Indicates a 70% success rate or higher

Source: IR Program Assessment Data

Course Success Rate by Campus – Multiple Campuses Only (3 of 3)

Dept., Associated Courses and Campus			2012-2013		2013-2014		2014-2015	
			Attempted	% Successful	Attempted	% Successful	Attempted	% Successful
Humanities/ Communication	REA0007	Daytona	121	83%	102	88%		
		Deland	7	86%	13	85%		
		Deltona	26	88%	17	76%		
		Flagler/Palm Cst	26	85%	15	100%		
		Total	180	84%	147	88%		
	REA0007L	Daytona	121	83%	102	88%		
		Deland	7	86%	13	85%		
		Deltona	26	88%	17	76%		
		Flagler/Palm Cst	26	85%	15	100%		
		Total	180	84%	147	88%		
	REA0017	Daytona	535	91%	611	84%	237	84%
		Deland	119	86%	123	88%	52	83%
		Deltona	137	85%	128	73%	7	86%
		Flagler/Palm Cst	107	83%	101	84%	29	86%
		New Smyrna Beach	35	97%	42	81%	14	86%
		Total	933	89%	1005	83%	339	84%
	REA0017L	Daytona	563	90%	619	83%	237	84%
		Deland	117	85%	130	88%	52	83%
		Deltona	162	85%	148	76%	18	78%
		Flagler/Palm Cst	129	81%	136	84%	53	75%
		New Smyrna Beach	40	93%	45	80%	20	65%
Total		1011	87%	1078	82%	380	81%	
REA1105	Daytona					31	58%	
	Flagler/Palm Cst					8	88%	
	Total					39	64%	

Excludes fully online courses

 Indicates a 70% success rate or higher

Source: IR Program Assessment Data

Course Success Rate By Instructional Method – Multiple Methods Only (1 of 2)

Dept., Associated Courses and Instructional Method			2012-2013		2013-2014		2014-2015	
			Attempted	% Successful	Attempted	% Successful	Attempted	% Successful
Humanities/ Communication	AML2050	Lecture	108	74%	103	66%	115	80%
		Online	58	81%	32	75%		
		Total	166	77%	135	68%	115	80%
	AML2060	Hybrid			65	66%	70	87%
		Lecture	29	97%	16	81%	15	80%
		Online	52	85%	60	78%	181	82%
		Total	81	89%	141	73%	266	83%
	AML2600	Lecture	76	71%	77	73%	65	77%
		Online	60	72%	60	82%	61	62%
		Total	136	71%	137	77%	126	70%
	ENC0025	Hybrid			19	84%	48	85%
		Lecture	730	85%	801	83%	298	87%
		Total	730	85%	820	83%	346	87%
	ENC0055L	Lecture			11	64%	542	72%
		Online					7	86%
		Total			11	64%	549	72%
	ENC1101	DIS			1	0%		
		Hybrid	117	80%	102	65%	116	71%
		Lecture	3757	71%	3663	70%	3740	70%
		Online	586	61%	710	57%	755	56%
		Total	4460	70%	4476	68%	4611	68%
	ENC1102	Hybrid	189	77%	94	66%	103	83%
		Lecture	2630	79%	2446	77%	2409	79%
		Online	698	74%	711	69%	719	70%
Total		3517	78%	3251	75%	3231	77%	

 Indicates a 70% success rate or higher

Source: IR Program Assessment Data

Course Success Rate By Instructional Method – Multiple Methods Only (2 of 2)

Dept., Associated Courses and Instructional Method			2012-2013		2013-2014		2014-2015	
			Attempted	% Successful	Attempted	% Successful	Attempted	% Successful
Humanities/ Communication	HUM2210	Hybrid	78	79%				
		Lecture	383	68%	261	68%	234	76%
		Online	170	77%	168	69%	82	63%
		Total	631	72%	429	69%	316	73%
	HUM2230	Hybrid	47	74%				
		Lecture	27	89%	21	81%	25	76%
		Online	112	77%	87	60%	29	55%
		Total	186	78%	108	64%	54	65%
	LIT2110	Lecture	45	87%	33	97%	14	57%
		Online	29	66%	57	77%	59	88%
		Total	74	78%	90	84%	73	82%
	LIT2120	Lecture	12	92%	37	70%	21	67%
		Online	31	77%	12	75%		
		Total	43	81%	49	71%	21	67%
	REA0017	Hybrid			17	76%	52	83%
		Lecture	933	89%	988	83%	287	85%
		Online	78	73%	72	76%	41	56%
		Total	1011	87%	1077	83%	380	81%
	RTV2300	Hybrid	15	93%	15	93%	15	100%
		Lecture	36	72%	37	86%	36	64%
		Online	110	67%	113	65%	116	57%
		Total	161	71%	165	72%	167	62%

Course Success Rates- Multiple Sessions or Sub-sessions Only (1 of 5)

Dept., Associated Courses and Sub-session				2012-2013		2013-2014		2014-2015	
				Attempted	% Successful	Attempted	% Successful	Attempted	% Successful
Humanities/ Communication	AML2050	FA	Full term	85	78%	87	71%	56	82%
		SP	Full term	81	75%	48	63%	59	78%
		Total		166	77%	135	68%	115	80%
	AML2060	FA	A term			30	83%	32	75%
			Full term	23	74%	65	66%	70	87%
			Session Total	23	74%	95	72%	102	83%
		SP	A term			30	73%	60	93%
			B term					22	59%
			Full term	58	95%	16	81%	15	80%
			Session Total	58	95%	46	76%	97	84%
	SU	Full term					67	84%	
	Total		81	89%	141	73%	266	83%	
	AML2600	FA	Full term	68	71%	70	79%	65	69%
		SP	Full term	68	72%	67	75%	61	70%
		Total		136	71%	137	77%	126	70%
	CRW2100	FA	Full term	19	47%	17	82%	18	89%
		SP	Full term	23	83%	18	94%	17	100%
		Total		42	67%	35	89%	35	94%
	CRW2300	FA	Full term	16	100%				
		SP	Full term	9	67%	17	88%		
		Total		25	88%	17	88%		
	ENC0015	FA	A term	137	88%	125	90%		
			B term	23	100%	22	100%		
			Full term	39	85%	33	88%		
			Session Total	199	88%	180	91%		
		SP	A term	78	86%				
			B term	25	64%				
			Session Total	103	81%				
SU	Full term	19	79%	25	100%				
Course Total		321	85%	205	92%				
ENC0015L	FA	A term	137	88%	125	90%			
		B term	23	100%	22	100%			
		Full term	39	85%	33	88%			
		Session Total	199	88%	180	91%			
	SP	A term	78	86%					
		B term	25	64%					
		Session Total	103	81%					
SU	Full term	19	79%	25	100%				
Course Total		321	85%	205	92%				

Years are reporting years, SU-SP. █ Indicates a 70% success rate or higher
Blank cells or missing years indicate no enrollment.

Source: IR Program Assessment Data

Course Success Rates- Multiple Sessions or Sub-sessions Only (2 of 5)

Dept., Associated Courses and Sub-session				2012-2013		2013-2014		2014-2015	
				Attempted	% Successful	Attempted	% Successful	Attempted	% Successful
Humanities/ Communication	ENC0025	FA	A term	90	86%	99	81%	167	83%
			B term	127	91%	170	84%	31	77%
			Full term	157	81%	129	81%		
			Session Total	374	85%	398	82%	198	82%
		SP	A term	78	88%	184	83%	41	98%
			B term	98	87%	97	81%	31	94%
			Full term	107	76%	63	87%		
			Session Total	283	83%	344	83%	72	96%
		SU	Full term	73	86%	78	83%	76	92%
	Total			730	85%	820	83%	346	87%
	ENC0025L	FA	A term	90	86%	99	81%	167	83%
			B term	127	91%	170	84%	31	77%
			Full term	157	81%	129	81%		
			Session Total	374	85%	398	82%	198	82%
		SP	A term	78	88%	184	83%	41	98%
			B term	98	87%	97	81%	31	94%
			Full term	107	76%	63	87%		
			Session Total	283	83%	344	83%	72	96%
		SU	Full term	73	86%	78	83%	76	92%
	Total			730	85%	820	83%	346	87%
	ENC0055L	FA	A term					14	93%
			B term					11	73%
			Full term					330	73%
			Session Total					355	74%
		SP	A term					7	57%
			B term					24	79%
			Full term			11	64%	163	69%
Session Total					11	64%	194	70%	
Total					11	64%	549	72%	
ENC1101	FA	A term	266	77%	257	75%	136	72%	
		B term	269	73%	257	68%	228	59%	
		Full term	2019	73%	2069	68%	2408	71%	
		Session Total	2554	73%	2583	69%	2772	70%	
	SP	A term	163	72%	92	68%	83	75%	
		B term	160	57%	174	64%	161	68%	
		Full term	1035	58%	1092	61%	1127	61%	
		Session Total	1358	59%	1358	61%	1371	63%	
	SU	Full term	548	83%	535	78%	468	71%	
	Course Total			4460	70%	4476	68%	4611	68%

Years are reporting years, SU-SP. █ Indicates a 70% success rate or higher
Blank cells or missing years indicate no enrollment.

Source: IR Program Assessment Data

Course Success Rates- Multiple Sessions or Sub-sessions Only (3 of 5)

Dept., Associated Courses and Sub-session			2012-2013		2013-2014		2014-2015		
			Attempted	% Successful	Attempted	% Successful	Attempted	% Successful	
Humanities/ Communication	ENC1102	FA	A term	43	84%	61	79%	43	72%
			B term	254	78%	206	68%	156	73%
			Full term	1079	76%	963	70%	918	76%
			Session Total	1376	77%	1230	70%	1117	75%
		SP	A term	76	86%	43	91%	48	88%
			B term	148	79%	129	65%	158	77%
			Full term	1475	77%	1450	77%	1550	76%
			Session Total	1699	77%	1622	76%	1756	76%
		SU	Full term	442	81%	399	83%	358	83%
		Total	3517	78%	3251	75%	3231	77%	
	ENC2210	FA	Full term	25	52%	22	64%	26	46%
		SP	Full term	25	40%	22	55%	22	64%
			Total	50	46%	44	59%	48	54%
	ENG2100	FA	Full term	13	100%	12	92%	22	100%
		SP	Full term	28	93%	11	100%	21	95%
			Total	41	95%	23	96%	43	98%
	ENL2931	FA	Full term	18	67%	13	62%	22	95%
		SP	Full term	20	75%	12	67%	18	89%
			Total	38	71%	25	64%	40	93%
	HUM2210	FA	A term	29	79%	28	86%		
			Full term	311	71%	199	63%	149	77%
			Session Total	340	71%	227	66%	149	77%
		SP	A term	28	82%				
			Full term	163	66%	90	67%	113	70%
			Session Total	191	69%	90	67%	113	70%
		SU	Full term	100	78%	112	76%	54	67%
			Total	631	72%	429	69%	316	73%
HUM2230		FA	B term	31	77%	30	60%		
	Full term		27	89%	21	81%	25	76%	
	Session Total		58	83%	51	69%	25	76%	
	SP	B term	26	73%					
		Full term	76	72%	29	45%	29	55%	
		Session Total	102	73%	29	45%	29	55%	
SU	Full term	26	88%	28	75%				
	Total	186	78%	108	64%	54	65%		
JOU1100	FA	Full term	8	100%	9	89%	16	56%	
	SP	Full term	12	50%	17	71%	16	100%	
		Total	20	70%	26	77%	32	78%	
LIN1670	FA	B term					45	69%	
		B term					9	100%	
	SP	Full term					26	73%	
		Session Total					35	80%	
	Total					80	74%		

Years are reporting years, SU-SP. Indicates a 70% success rate or higher
Blank cells or missing years indicate no enrollment.

Source: IR Program Assessment Data

Course Success Rates- Multiple Sessions or Sub-sessions Only (4 of 5)

Dept., Associated Courses and Sub-session				2012-2013		2013-2014		2014-2015	
				Attempted	% Successful	Attempted	% Successful	Attempted	% Successful
Humanities/ Communication	LIT2110	FA	Full term	51	75%	51	84%	44	82%
		SP	Full term	23	87%	11	91%		
		SU	Full term			28	82%	29	83%
		Total		74	78%	90	84%	73	82%
	LIT2120	SP	Full term	12	92%	37	70%	21	67%
		SU	Full term	31	77%	12	75%		
		Total		43	81%	49	71%	21	67%
	MMC1000	FA	Full term			21	71%	28	61%
		SP	Full term	14	100%	17	65%	16	81%
		Total		14	100%	38	68%	44	68%
	REA0007	FA	A term	79	91%	90	87%		
			B term	23	65%	14	86%		
			Full term	29	79%	27	85%		
			Session Total	131	84%	131	86%		
		SP	A term	38	92%				
		SU	Full term	11	64%	16	100%		
		Total		180	84%	147	88%		
	REA0007L	FA	A term	79	91%	90	87%		
			B term	23	65%	14	86%		
			Full term	29	79%	27	85%		
			Session Total	131	84%	131	86%		
SP		A term	38	92%					
SU		Full term	11	64%	16	100%			
Total		180	84%	147	88%				
REA0017	FA	A term	175	90%	223	90%	154	86%	
		B term	181	85%	196	84%	57	79%	
		Full term	233	87%	161	78%			
		Session Total	589	87%	580	84%	211	84%	
	SP	A term	134	87%	203	77%	58	84%	
		B term	123	86%	131	80%	40	55%	
		Full term	80	81%	63	83%			
		Session Total	337	85%	397	79%	98	72%	
	SU	Full term	85	94%	100	86%	71	85%	
	Total		1011	87%	1077	83%	380	81%	

Years are reporting years, SU-SP. Indicates a 70% success rate or higher
Blank cells or missing years indicate no enrollment.

Source: IR Program Assessment Data

Course Success Rates- Multiple Sessions or Sub-sessions Only (5 of 5)

Dept., Associated Courses and Sub-session				2012-2013		2013-2014		2014-2015	
				Attempted	% Successful	Attempted	% Successful	Attempted	% Successful
Humanities/ Communication	REA0017L	FA	A term	175	90%	223	90%	154	86%
			B term	181	85%	197	84%	57	79%
			Full term	233	87%	161	78%		
			Session Total	589	87%	581	84%	211	84%
		SP	A term	134	87%	203	77%	58	84%
			B term	123	86%	131	80%	40	55%
			Full term	80	81%	63	83%		
			Session Total	337	85%	397	79%	98	72%
		SU	Full term	85	94%	100	86%	71	85%
		Total			1011	87%	1078	82%	380
	REA1105	FA	B term					13	69%
			Session Total					13	69%
		SP	B term					15	73%
			Full term					11	45%
			Session Total					26	62%
			Total						39
	RTV2300	FA	Full term	70	76%	73	70%	73	53%
		SP	Full term	76	62%	77	70%	79	63%
		SU	Full term	15	93%	15	93%	15	100%
		Total			161	71%	165	72%	167

Years are reporting years, SU-SP. █ Indicates a 70% success rate or higher
Blank cells or missing years indicate no enrollment.

Source: IR Program Assessment Data

Course Learning Outcomes ENC1101

The student will be able to:

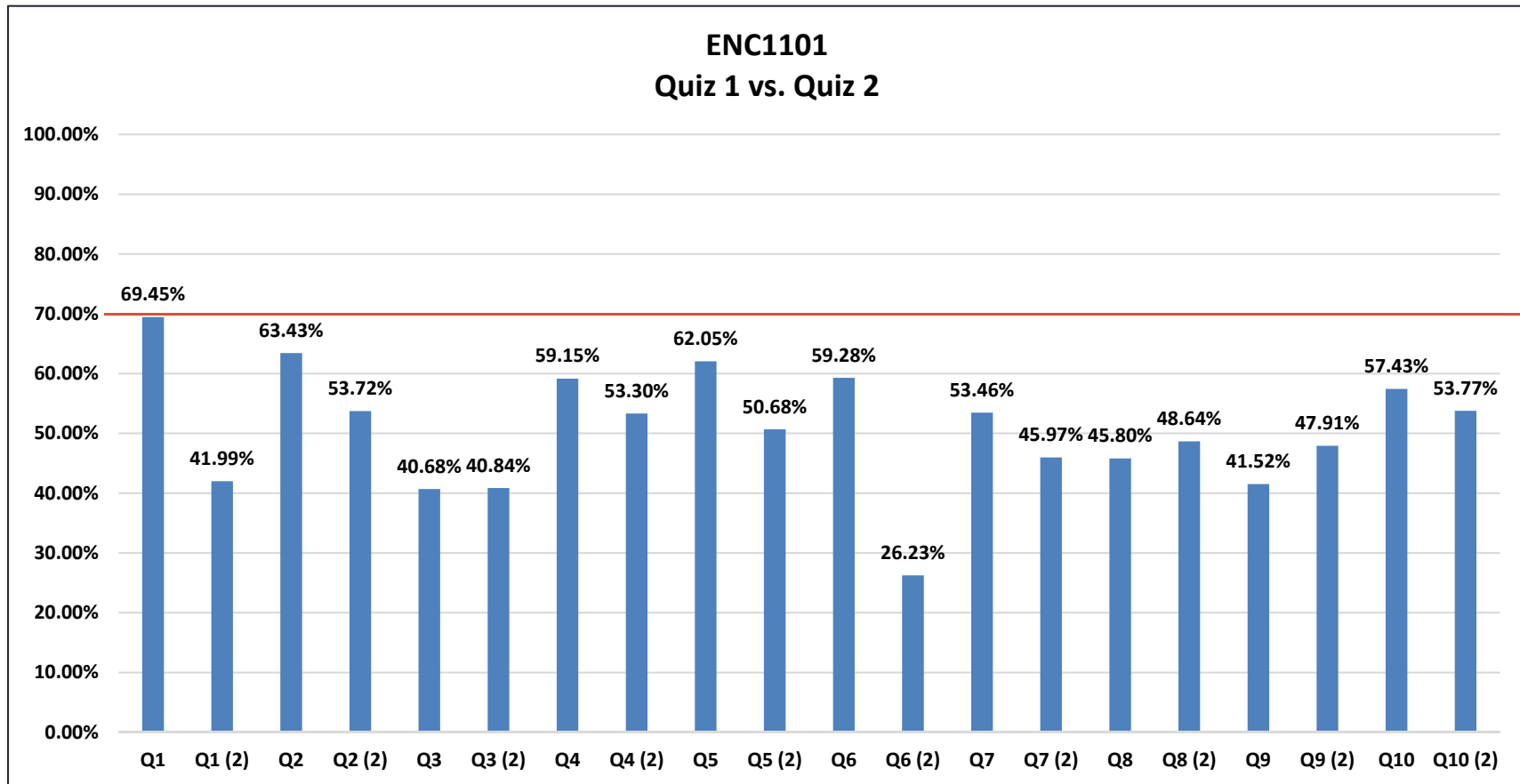
1. Demonstrate critical thinking and reading skills. (1, 2)
2. Apply an understanding of the elements of writing processes to various genres. (1, 2, 4)
3. Use strategies for composing in different rhetorical situations. (1, 2, 3)

Course Learning Outcomes ENC1102

The student will be able to:

1. Synthesize ideas from a variety of sources. (1, 2)
2. Integrate inquiry-based research into writing processes. (1, 2, 4)
3. Produce analytic texts that effectively address different rhetorical situations. (1, 2, 3)

Course Assessment Results - ENC1101

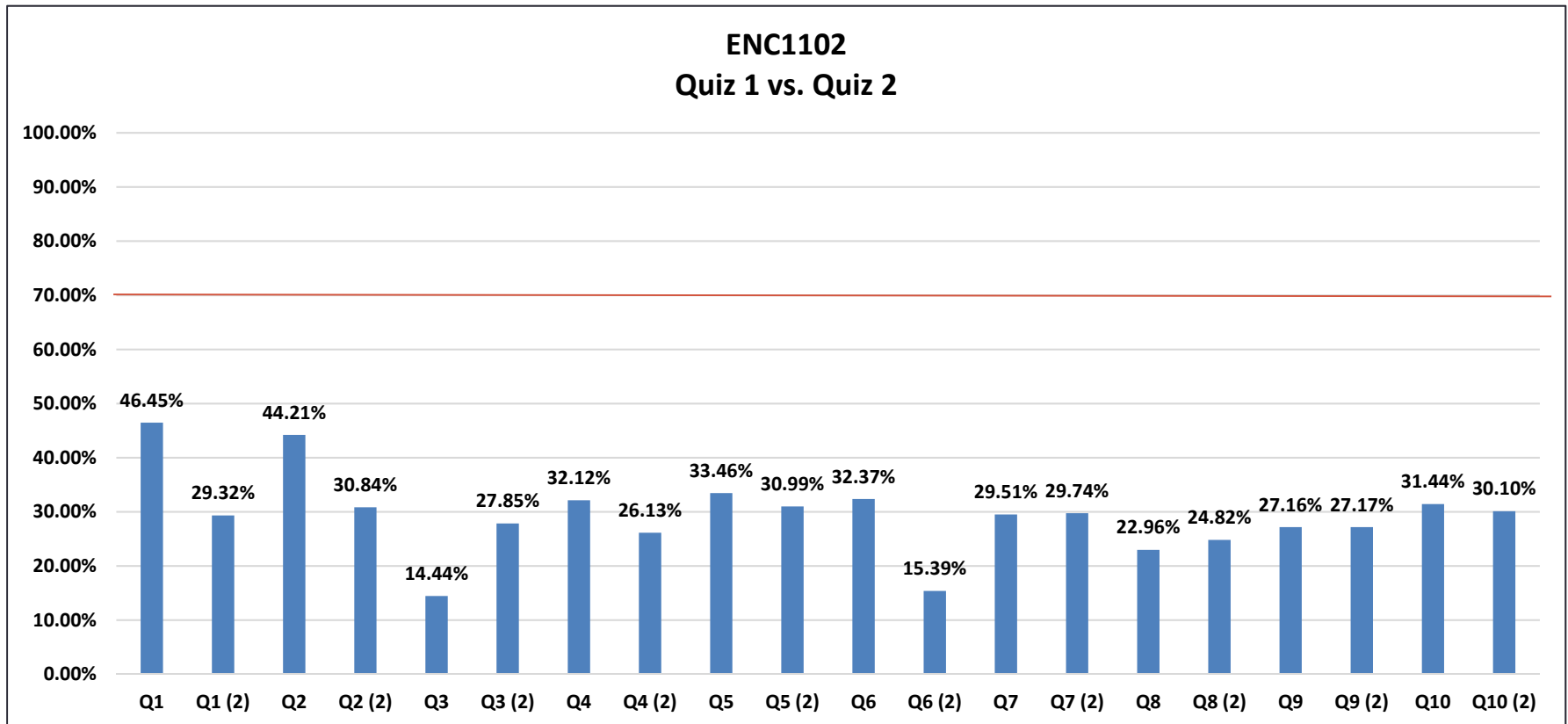


Q: Question

Q1: Question 1 for Quiz 1

Q1(2): Question 1 for Quiz 2

Course Assessment Results – ENC1102



Q: Question

Q1: Question 1 for Quiz 1

Q1(2): Question 1 for Quiz 2

Course Assessment Results - ENC1101

QUIZ 1	Q1	Q2	Q3	Q4	Q5	Q6	Q7	Q8	Q9	Q10
FA14										
ENC1101	61.82%	53.94%	61.49%	70.67%	73.60%	71.73%	67.51%	61.90%	36.96%	65.07%
F2F	61.38%	53.66%	61.08%	69.61%	73.12%	71.31%	67.00%	61.58%	37.11%	63.59%
Hybrid	70.00%	60.00%	50.00%	80.00%	80.00%	80.00%	65.00%	65.00%	45.00%	55.00%
Online	63.08%	54.67%	64.49%	74.77%	75.23%	72.90%	70.09%	63.08%	35.51%	72.90%
SP15										
ENC1101	82.93%	80.20%	30.42%	77.33%	82.07%	75.90%	63.13%	47.20%	76.61%	81.35%
F2F	82.72%	80.88%	27.94%	78.86%	81.25%	75.92%	60.85%	45.40%	76.47%	80.45%
Online	83.66%	77.78%	39.22%	71.90%	84.97%	75.82%	71.24%	53.59%	77.12%	83.01%

QUIZ 2	Q1	Q2	Q3	Q4	Q5	Q6	Q7	Q8	Q9	Q10
FA14										
ENC1101	30.06%	55.56%	29.57%	62.39%	48.17%	25.35%	39.56%	55.08%	49.47%	54.91%
F2F	28.49%	55.87%	29.19%	62.69%	47.94%	25.18%	39.12%	55.07%	49.45%	54.56%
Hybrid	15.00%	45.00%	20.00%	45.00%	35.00%	10.00%	40.00%	35.00%	40.00%	50.00%
Online	38.79%	55.14%	32.24%	62.62%	50.47%	27.57%	41.59%	57.01%	50.47%	57.01%
SP15										
ENC1101	61.98%	49.07%	59.68%	35.87%	53.80%	27.12%	56.10%	36.01%	43.90%	50.36%
F2F	61.58%	48.35%	61.03%	34.38%	52.39%	26.10%	55.70%	36.21%	41.54%	48.53%
Online	63.40%	51.63%	54.90%	41.18%	58.82%	30.72%	57.52%	35.29%	52.29%	56.86%

Q: Question

Course Assessment Results – ENC1102

QUIZ 1	Q1	Q2	Q3	Q4	Q5	Q6	Q7	Q8	Q9	Q10
FA14										
ENC1102	65.96%	58.43%	62.35%	73.19%	77.71%	75.90%	75.60%	65.66%	40.36%	63.55%
F2F	65.66%	57.91%	62.29%	72.05%	76.77%	75.42%	74.75%	63.97%	38.38%	61.95%
Online	68.57%	62.86%	62.86%	82.86%	85.71%	80.00%	82.86%	80.00%	57.14%	77.14%
SP15										
ENC1102	82.26%	80.45%	20.60%	78.50%	81.05%	78.05%	67.97%	49.47%	77.14%	80.90%
F2F	81.89%	79.97%	20.35%	78.37%	80.61%	77.56%	68.27%	49.84%	76.60%	80.45%
Online	87.80%	87.80%	24.39%	80.49%	87.80%	85.37%	63.41%	43.90%	85.37%	87.80%

QUIZ 2	Q1	Q2	Q3	Q4	Q5	Q6	Q7	Q8	Q9	Q10
FA14										
ENC1102	32.23%	61.75%	26.81%	66.27%	53.01%	31.93%	41.87%	57.83%	51.81%	58.73%
F2F	32.66%	61.62%	26.94%	65.66%	52.19%	32.32%	41.75%	56.90%	50.51%	57.91%
Online	28.57%	62.86%	25.71%	71.43%	60.00%	28.57%	42.86%	65.71%	62.86%	65.71%
SP15										
ENC1102	68.12%	57.74%	66.62%	41.95%	62.56%	28.27%	64.51%	42.41%	52.18%	57.14%
F2F	68.59%	58.17%	66.99%	42.31%	62.82%	27.72%	64.74%	42.79%	52.40%	57.53%
Online	60.98%	51.22%	60.98%	36.59%	58.54%	36.59%	60.98%	36.59%	48.78%	51.22%

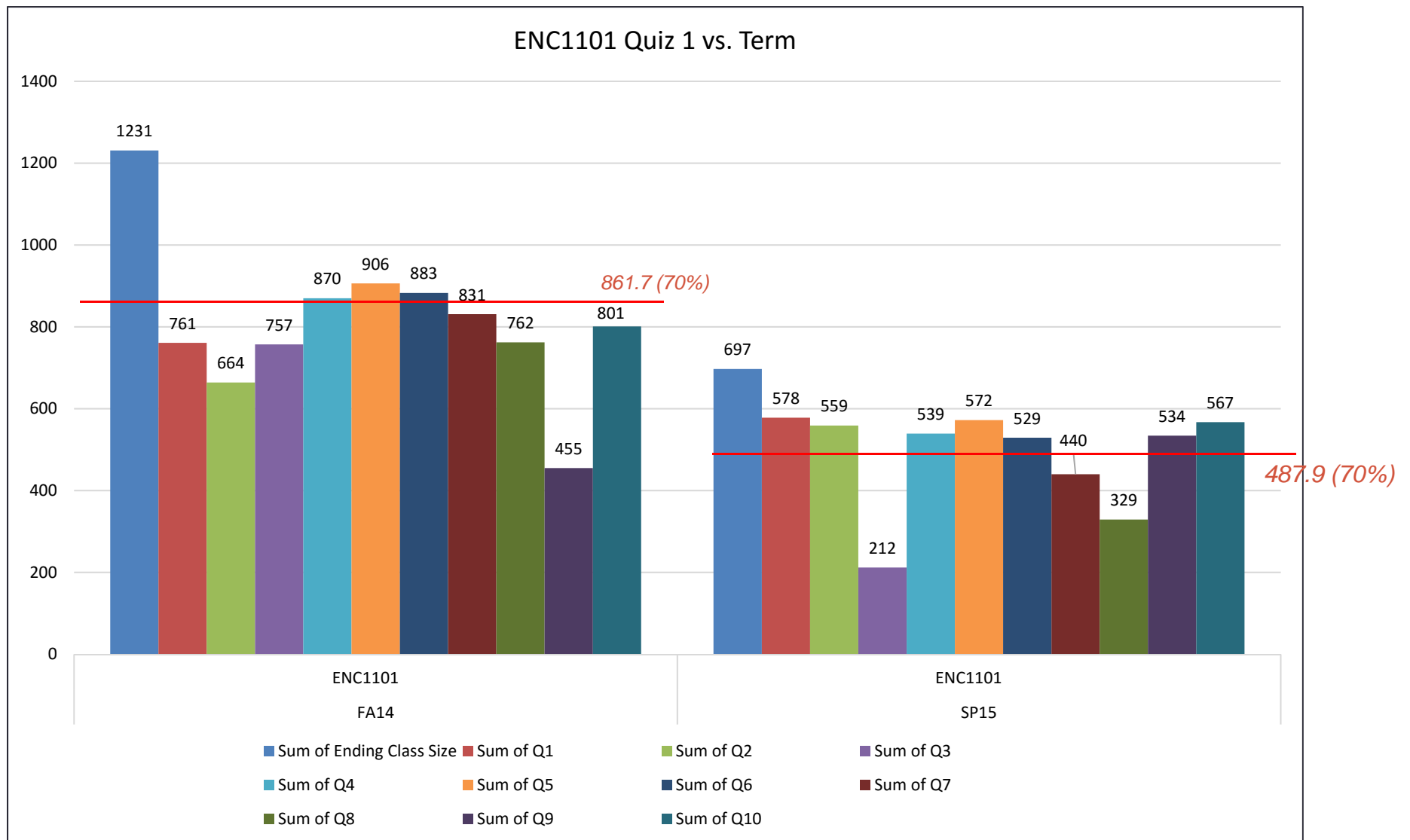
Q: Question

Course Assessment Results

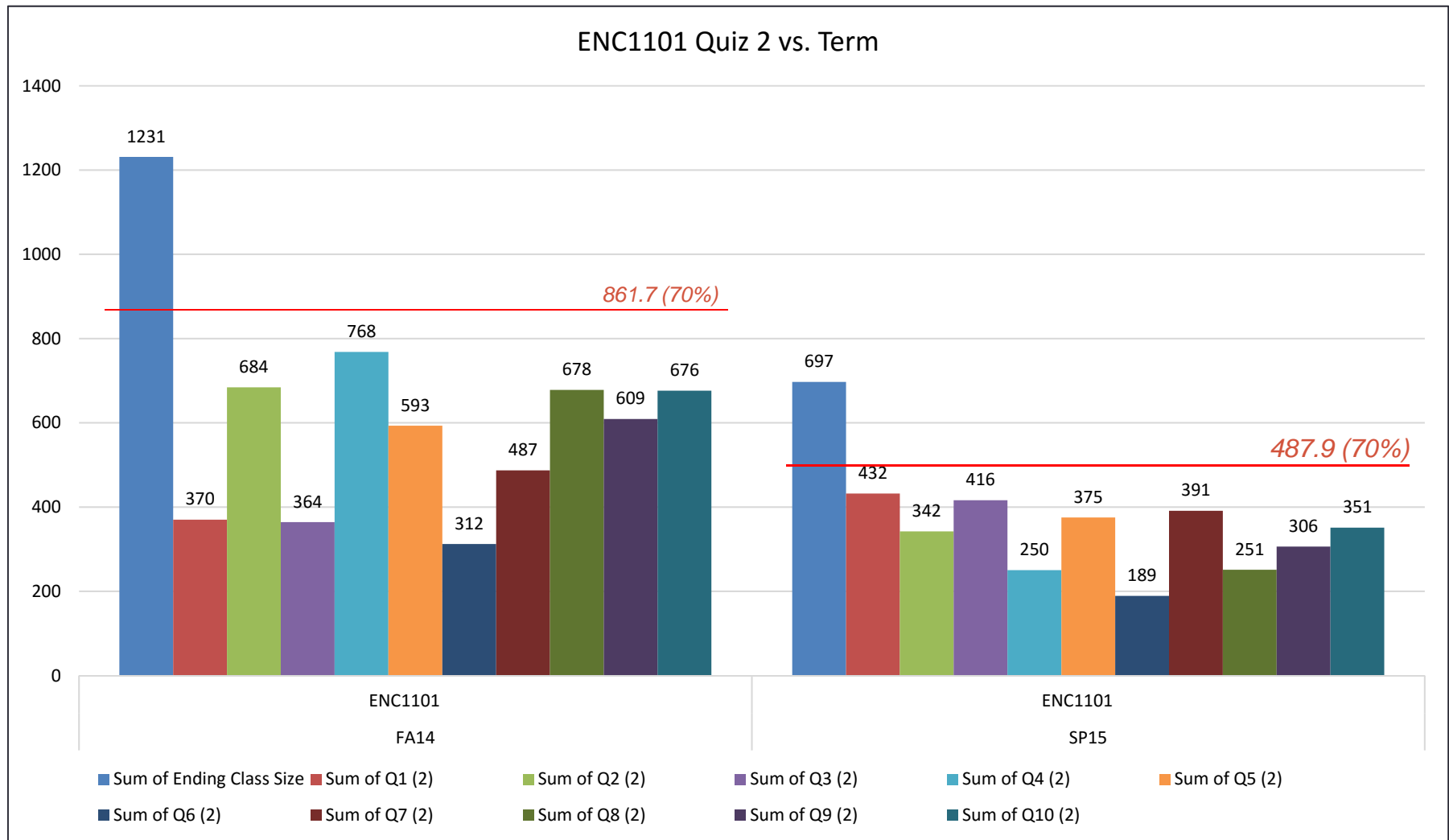
Fall 2014		Spring 2015	
ENC1101 Quiz 1	ENC1101 Quiz 2	ENC1101 Quiz 1	ENC1101 Quiz 2
1. Main idea 2. Tone 3. Fact/Opinion 4. Vocabulary in context 5. Writer's purpose 6. Assumptions 7. Conclusion 8. Implications 9. Title 10. Prediction	1. Main idea 2. Tone 3. Fact/Opinion 4. Vocabulary in context 5. Writer's purpose 6. Assumptions 7. Conclusion 8. Implications 9. Title 10. Prediction	1. Main idea 2. Tone 3. Fact/Opinion 4. Vocabulary in context 5. Writer's purpose 6. Assumptions 7. Conclusion 8. Implications 9. Title 10. Prediction	1. Main idea 2. Tone 3. Fact/Opinion 4. Vocabulary in context 5. Writer's purpose 6. Assumptions 7. Conclusion 8. Implications 9. Title 10. Prediction
ENC1102 Quiz 1	ENC1102 Quiz 2	ENC1102 Quiz 1	ENC1102 Quiz 2
1. Main idea 2. Tone 3. Fact/Opinion 4. Vocabulary in context 5. Writer's purpose 6. Assumptions 7. Conclusion 8. Implications 9. Title 10. Prediction	1. Main idea 2. Tone 3. Fact/Opinion 4. Vocabulary in context 5. Writer's purpose 6. Assumptions 7. Conclusion 8. Implications 9. Title 10. Prediction	1. Main idea 2. Tone 3. Fact/Opinion 4. Vocabulary in context 5. Writer's purpose 6. Assumptions 7. Conclusion 8. Implications 9. Title 10. Prediction	1. Main idea 2. Tone 3. Fact/Opinion 4. Vocabulary in context 5. Writer's purpose 6. Assumptions 7. Conclusion 8. Implications 9. Title 10. Prediction

Red = One of three lowest scores / Green = One of three highest scores

Course Assessment Results

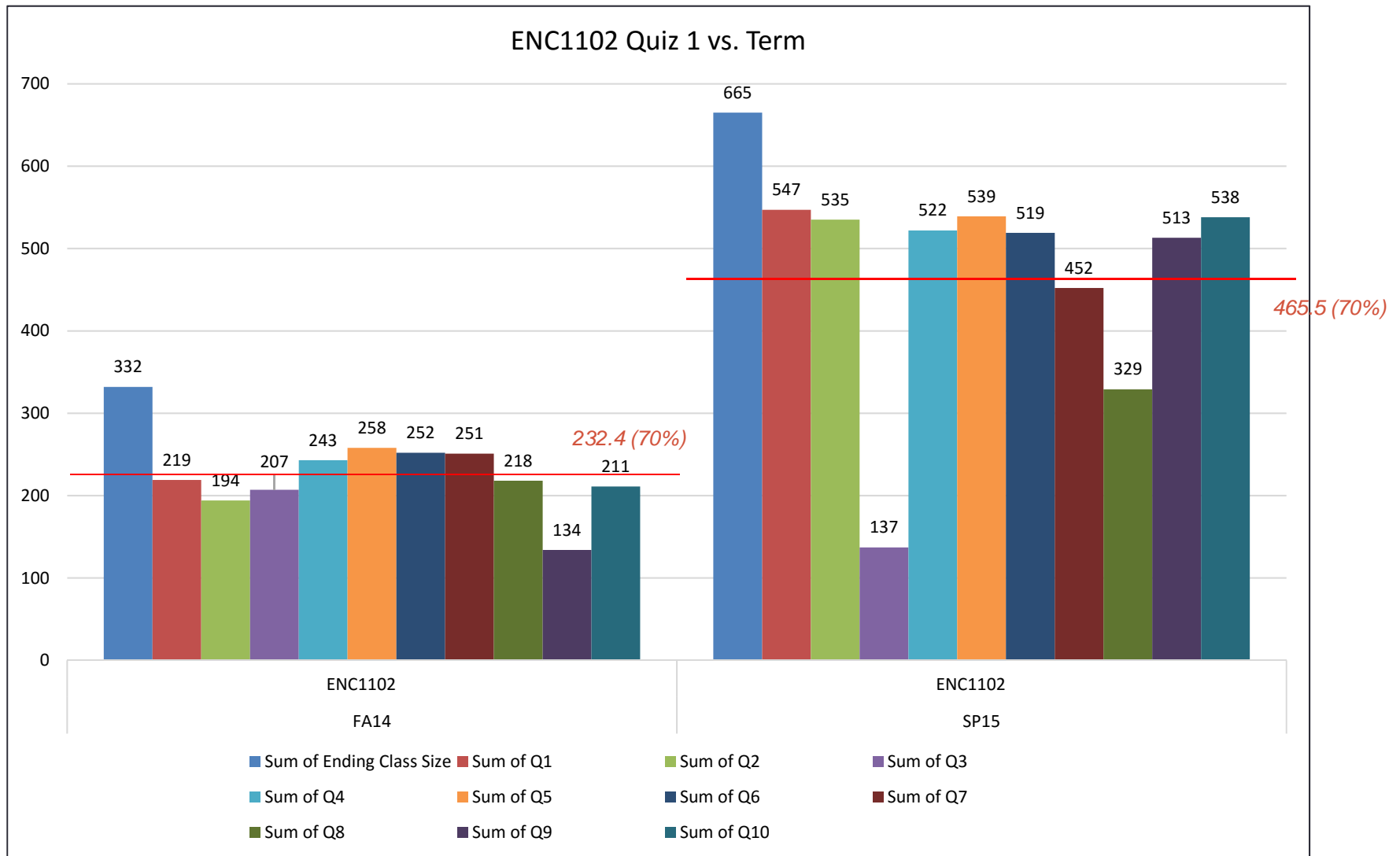


Course Assessment Results



Q: Question

Course Assessment Results



Q: Question

Course Assessment Results

