

**DAYTONA STATE COLLEGE**  
**Accelerated**  
**ASSOCIATE OF SCIENCE – RESPIRATORY CARE**

**Pre-requisite courses**

BSC 1085C	Human Anatomy & Physiology with Lab
ENC 1101	Introduction to Composition
MAC 1105	College Algebra
RET 1021	Respiratory Care Introduction



Pre-requisite courses must be taken prior to entering the program Fall semester, but do not need to be completed prior to applying to the program.

**Co-requisite courses**

Civic Literacy Requirement (choose one)	POS 2041	American Federal Government
	AMH 2020	United States History
PSY 1012	General Psychology	
BSC 1086C	Human Anatomy & Physiology with Lab	
MCB 1010C	Microbiology with Lab	
Humanities Requirement (choose one)	ARH 1000	Art Appreciation
	HUM 2020	Introduction to Humanities
	LIT 2000	Literature & Culture
	MUL 1010	Music Appreciation
	PHI 2010	Introduction to Philosophy
	THE 1000	Theater Appreciation

Co-requisite courses may be taken prior to or during the program courses.  
 Substitute courses may be considered on an individual basis.

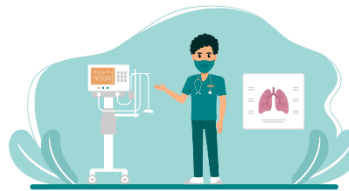
**Program Courses**

Semester 1	RET 1026C	Basic Equipment with Lab	Monday 9:00 – 1:00
FALL	RET 1485	Cardiopulmonary Anatomy & Physiology	Tuesday 9:00 – 1:00
	RET 1025C	Principles of Respiratory Care with Lab	Wednesday 9:00 – 1:00
	RET 2350	Cardiopulmonary Pharmacology	Tuesday 1:00 – 4:00 Hybrid
Semester 2	RET 1265C	Mechanical Ventilation with Lab	Monday 9:00 – 2:00
SPRING	RET 1295	Chest Medicine	Wednesday 1:30 – 4:30 Hybrid
	RET 1264C	Advanced Equipment with Lab	Wednesday 9:00 – 1:00
	RET 1874	Clinical Practice I	Days and Shifts vary
Semester 3	RET 1450	Basic Physiologic Monitoring	Wednesday 9:00 – 12:00 Hybrid
SUMMER	RET 2244	Life Support	Monday 9:00 – 1:00 Hybrid
10 – weeks	RET 1875	Clinical Practice II	Days and Shifts vary
Semester 4	RET 2714	Neonatal / Pediatric Respiratory Care	Monday 1:00 – 4:00 Hybrid
FALL	RET 2934	Respiratory Care Seminar	Monday 9:00 – 12:00
	RET 2876	Clinical Practice III	Days and Shifts vary



## Additional Information

The Program begins each Fall semester.  
This is a 4-semester accelerated program.  
Hybrid courses do not meet each week and have most assignments on-line.  
Schedules are subject to change.



Total Credit Hours required:	27 General Education
	49 Respiratory Care Specific
	—
	76 Total

The cost of the program includes \$7,782.40 for in-state tuition and an additional approximate \$3,000 for books, uniforms, supplies, background screens, lab fees and professional memberships and certifications. This program is eligible for financial aid.

This program is accredited by the Commission on Accreditation for Respiratory Care (CoARC).

This AS Degree program makes you immediately eligible for completing the national board exams to obtain credentials and license to practice. The degree also makes you eligible for transfer into most BS Cardiopulmonary Sciences Degree programs.

Applications are accepted year-round but due by May 31 to be considered for Fall admission.

Visit our website by typing “Respiratory Care” into the Daytona State College website or

<https://www.daytonastate.edu/academic-departments/college-of-health-and-public-services/school-of-health-careers/respiratory-care.html>



Application requirements include official transcripts evaluated by DSC, a minimum overall GPA of 2.5, successful completion of the pre-requisites with a grade C or above, a letter of interest, and attendance at an Information Session. Applicants are ranked according to a rubric. Supplemental material that improves the strength of an application include job shadowing of an RT, letters of reference, carrying current medical licenses or certifications.

Admission into the program is contingent upon the satisfactory completion of both a drug screen and background check consisting of a fingerprint check of state and federal criminal history information conducted through the Florida Department of Law Enforcement (FDLE) and Federal Bureau of Investigation (FBI). This service is done through Castle Branch for direct reporting to the college.

Prior to starting clinical rotations, all students are required to obtain a Basic Life Support (BLS) card from either American Heart Association or American Red Cross. Immunizations and physicals are also kept on file.

ACLS & PALS will be completed during the program.

For more information, please contact:

DSC Advisors | [advising@daytonastate.edu](mailto:advising@daytonastate.edu) | 386-506-3661

RC Program Director – Melanie McDonough | [melanie.mcdonough@daytonastate.edu](mailto:melanie.mcdonough@daytonastate.edu) | 386-506-3759

Health Careers Academic Advisor – Melissa Brown | [melissa.brown-mack@daytonastate.edu](mailto:melissa.brown-mack@daytonastate.edu) | 386-506-3052